



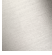

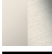


CYO Wall-mounted basin spout without pop-up waste - Brushed Durabrass (23kt Gold)

CYO

13 800 811



- 160mm projection
- fixed spout
- rectangular, air-enriched flow
- hole diameter 37 mm
- 1/2" connection
- max. flow 4.5 l/min
- lead-free
- This product can help a building meet the requirements of Green Building Rating Systems, e.g. LEED®, BREEAM®, DGNB

	Brushed Durabrass (23kt Gold)	13 800 811-28
	Chrome	13 800 811-00
	Brushed Platinum	13 800 811-06
	Dark Chrome	13 800 811-19
	Platinum / Brushed Platinum	13 800 811-36
	Durabrass / Brushed Durabrass (23kt Gold)	13 800 811-38
	Brushed Dark Platinum	13 800 811-99

Recommended miscellaneous

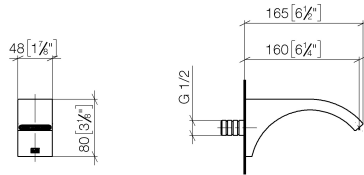
- Concealed wall elbow -** 35 085 970 90
- max. recess depth 163 mm
 - min. recess depth 90 mm



CYO Wall-mounted basin spout without pop-up waste - Brushed Durabrass (23kt Gold)

CYO

13 800 811
mm [inches]



Flow rate chart



Codes & Standards

DIN 4109

ISO 3822

NSF372

NSF61

Ü-Zeichen



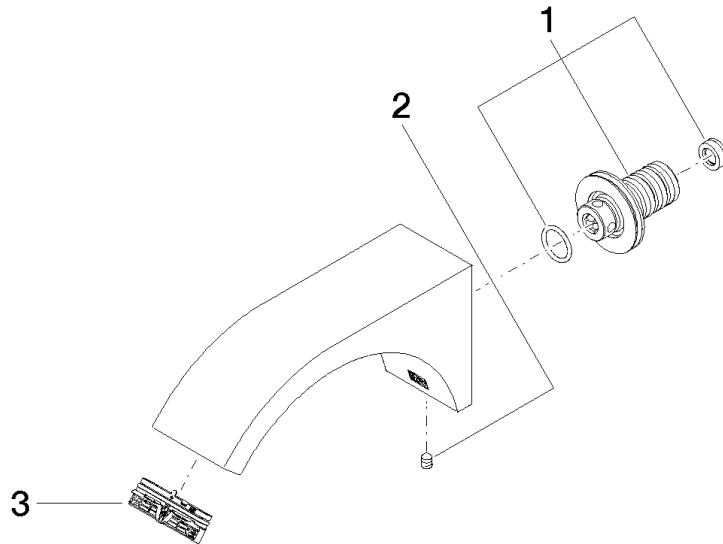
CYO Wall-mounted basin spout without pop-up waste - Brushed Durabrass
(23kt Gold)

CYO

13 800 811
Certificates and sustainability

LGA_38 IAPMO_N-4 IAPMO_6

13 800 811



Spare parts list

No.	Item Number	Name	Quantity used	Delivery time
1	90 24 03 108 01 90	nipple set	1.00	2
3	90 29 03 121 00 90	aerator	1.00	2
2	90 31 11 004 00 90	pin	1.00	2