

META Pillar tap cold water - Chrome

META

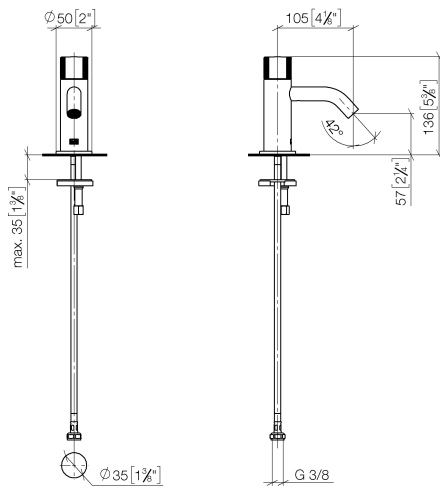
17 500 660 Product version from 7/1/2023



- 105mm projection
- fixed spout
- circular, air-enriched flow
- height of mixer 136 mm
- height up to aerator 57 mm
- hole diameter 35 mm
- 1/2" connection
- rosette Ø 50 mm
- max. flow 5.7 l/min
- lead-free
- This product can help a building meet the requirements of Green Building Rating Systems, e.g. LEED®, BREEAM®, DGNB
- WRAS

| | | |
|---|-------------------------------|---------------|
|  | Chrome | 17 500 660-00 |
|  | Brushed Platinum | 17 500 660-06 |
|  | Dark Chrome | 17 500 660-19 |
|  | Light Gold | 17 500 660-26 |
|  | Brushed Light Gold | 17 500 660-27 |
|  | Matte Black | 17 500 660-33 |
|  | Brushed Dark Brass | 17 500 660-39 |
|  | Brushed Bronze | 17 500 660-42 |
|  | Brushed Champagne (22kt Gold) | 17 500 660-46 |
|  | Champagne (22kt Gold) | 17 500 660-47 |
|  | Brushed Chrome | 17 500 660-93 |
|  | Brushed Dark Platinum | 17 500 660-99 |

mm [inches]



Flow rate chart



Codes & Standards

DIN 4109

ISO 3822

Scottish Water
Byelaws

UK Water Supply
Regulations

Ü-Zeichen



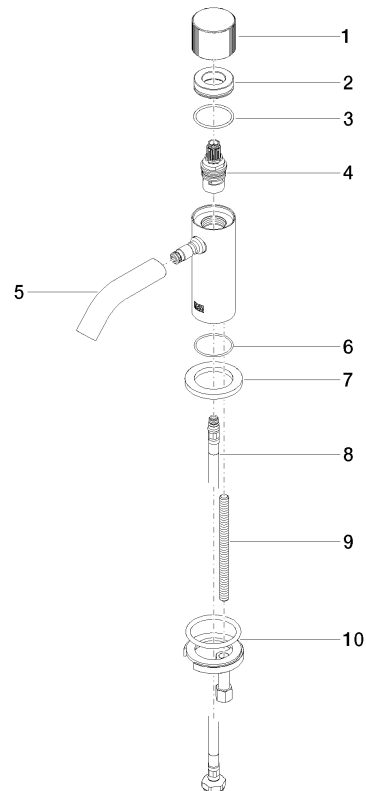
META Pillar tap cold water - Chrome

META

17 500 660 Product version from 7/1/2023

Certificates and sustainability

WRAS_2001 LGA_18



Spare parts list

| No. | Item Number | Name | Quantity used | Delivery time |
|-----|--------------------|------------|---------------|---------------|
| 6 | 09 14 10 202 90 | seal | 1.00 | 2 |
| 5 | 90 11 06 212 00-00 | spout | 1.00 | 10 |
| 10 | 04 30 11 038 00 90 | fixing set | 1.00 | 2 |
| 3 | 09 14 10 040 90 | seal | 1.00 | 2 |
| 8 | 04 30 04 100 00 90 | hose | 1.00 | 2 |
| 4 | 90 90 03 135 00 90 | top | 1.00 | 2 |
| 9 | 09 31 11 012 90 | pin | 1.00 | 2 |
| 7 | 09 27 66 006-00 | rosette | 1.00 | 10 |
| 2 | 09 21 02 307-00 | cover | 1.00 | 10 |
| 1 | 09 20 66 012-00 | handle | 1.00 | 10 |