

META Pillar tap cold water - Chrome

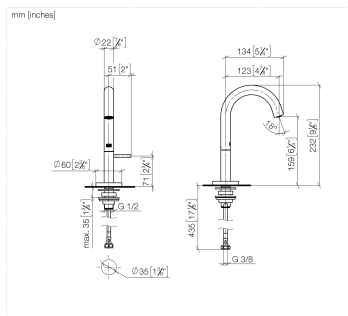
META

17 500 662 Product version from 5/1/2022



- 123mm projection
- fixed spout
- circular, air-enriched flow
- height of mixer 232 mm
- height up to aerator 159 mm
- hole diameter 35 mm
- 1/2" connection
- rosette Ø 60 mm
- max. flow 5.7 l/min
- lead-free
- This product can help a building meet the requirements of Green Building Rating Systems, e.g. LEED®, BREEAM®, DGNB

| | | |
|---|-------------------------------|---------------|
|  | Chrome | 17 500 662-00 |
|  | Brushed Platinum | 17 500 662-06 |
|  | Dark Chrome | 17 500 662-19 |
|  | Light Gold | 17 500 662-26 |
|  | Brushed Light Gold | 17 500 662-27 |
|  | Matte Black | 17 500 662-33 |
|  | Brushed Dark Brass | 17 500 662-39 |
|  | Brushed Bronze | 17 500 662-42 |
|  | Brushed Champagne (22kt Gold) | 17 500 662-46 |
|  | Champagne (22kt Gold) | 17 500 662-47 |
|  | Brushed Chrome | 17 500 662-93 |
|  | Brushed Dark Platinum | 17 500 662-99 |



Flow rate chart



Codes & Standards

DIN 4109

ISO 3822

Ü-Zeichen



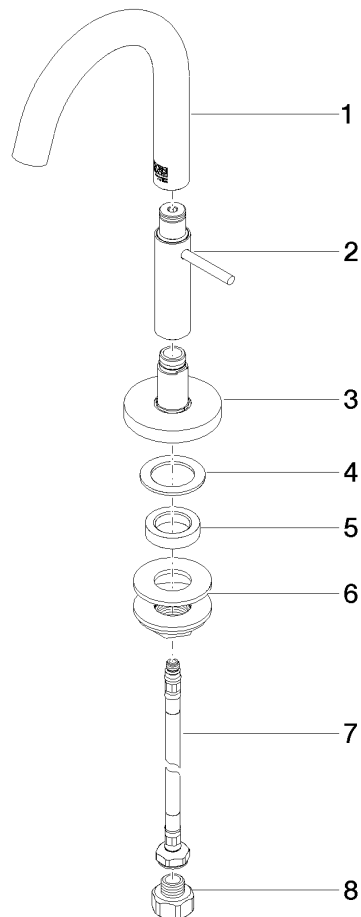
META Pillar tap cold water - Chrome

META

17 500 662 Product version from 5/1/2022

Certificates and sustainability

LGA_38



Spare parts list

| No. | Item Number | Name | Quantity used | Delivery time |
|-----|--------------------|---------------------------|---------------|---------------|
| 5 | 09 28 10 079 90 | ring | 1.00 | 60 |
| 3 | 90 27 66 020 00-00 | rosette | 1.00 | 10 |
| 6 | 04 23 10 017 00 90 | fixing set | 1.00 | 60 |
| 2 | 90 20 66 024 10-00 | handle | 1.00 | 10 |
| 1 | 90 28 22 388 00-00 | spout | 1.00 | 10 |
| 4 | 09 14 05 015 90 | seal | 1.00 | 2 |
| 7 | 04 30 04 102 00 90 | High pressure hose 3/8" - | 1.00 | 2 |
| 8 | 90 24 03 267 00-00 | adaptor | 1.00 | 10 |