

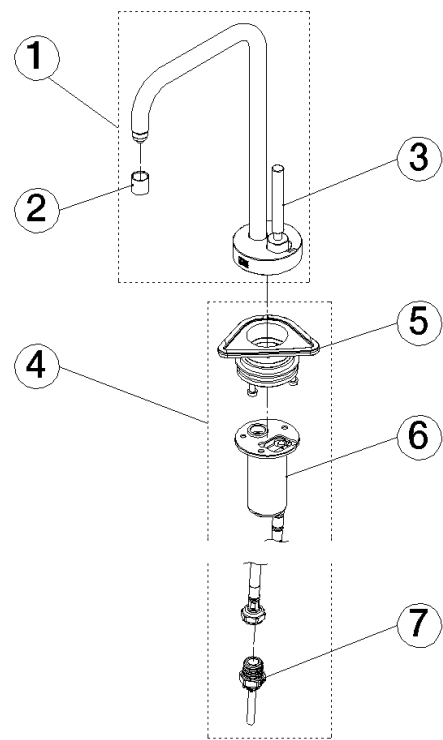


- 145mm projection
  - pivotable spout 360°
  - laminar flow
  - height of mixer 250 mm
  - height up to laminar flow regulator 185 mm
  - hole diameter 35 mm
  - Provides filtered water
  - max. flow 3.8 l/min at 3 bar flow pressure
  - mechanical valve
  - lead-free
  - This product can help a building meet the requirements of Green Building Rating Systems, e.g. LEED®, BREEAM®, DGNB
- The filter cartridge must be changed every six months. The installation instructions contain further information for guidance.
- Detailed planning information and technical data can be found at [www.dornbracht.com/professional](http://www.dornbracht.com/professional)
- NOTE: Not compatible with reverse osmosis
- Not compatible with reverse osmosis filtration

	Matte Black	17 872 861-33
	Chrome	17 872 861-00
	Brushed Platinum	17 872 861-06
	Platinum	17 872 861-08
	Durabronze (23kt Gold)	17 872 861-09
	Dark Chrome	17 872 861-19
	Brushed Durabronze (23kt Gold)	17 872 861-28
	Brushed Bronze	17 872 861-42
	Brushed Champagne (22kt Gold)	17 872 861-46
	Champagne (22kt Gold)	17 872 861-47
	Brushed Chrome	17 872 861-93
	Brushed Dark Platinum	17 872 861-99



Parts for other finishes can be found here: [Chrome](#)



### Spare parts list

No.	Item Number	Name	Quantity used	Delivery time
1	90 17 87 286 10-33	spout	1.00	30
4	90 17 87 287 51 90	set	1.00	2
5	90 30 10 057 00 90	fixing set	1.00	2
2	90 18 40 163 01-33	aerator	1.00	20
6	90 30 01 221 00 90	hose	1.00	2
7	90 24 04 293 02 90	adaptor	1.00	2
3	90 20 87 022 00-33	handle	1.00	30