
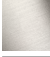






## CL.1 Deck valve anti-clockwise closing hot - Chrome

20 005 706 Product version from 3/9/2015



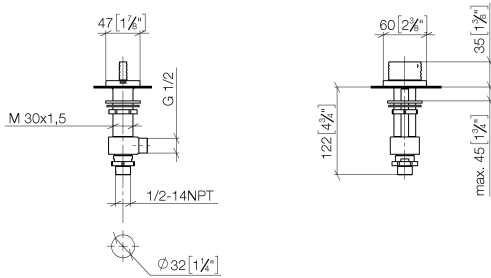
- with WAVES structure
- hole diameter 32 mm
- rosette 60 x 47 mm
- with hot marking
- WRAS

	Chrome	20 005 706-00
	Brushed Platinum	20 005 706-06
	Dark Chrome	20 005 706-19
	Brushed Champagne (22kt Gold)	20 005 706-46
	Champagne (22kt Gold)	20 005 706-47
	Brushed Dark Platinum	20 005 706-99

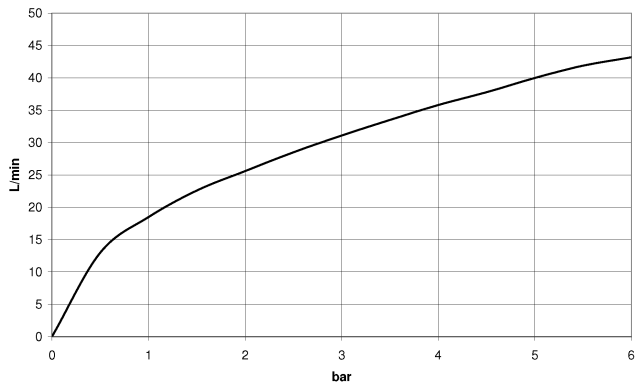
## CL.1 Deck valve anti-clockwise closing hot - Chrome

20 005 706 Product version from 3/9/2015

mm [inches]



### Flow rate chart



### Codes & Standards

ASME A112.18.1	cUPC	DIN 4109	ISO 3822
NSF372	NSF61	Scottish Water Byelaws	UK Water Supply Regulations

### Ü-Zeichen



## CL.1 Deck valve anti-clockwise closing hot - Chrome

---

20 005 706 Product version from 3/9/2015

### Certificates

---

WRAS\_1804

IAPMO\_N-4

LGA\_28

IAPMO\_4976

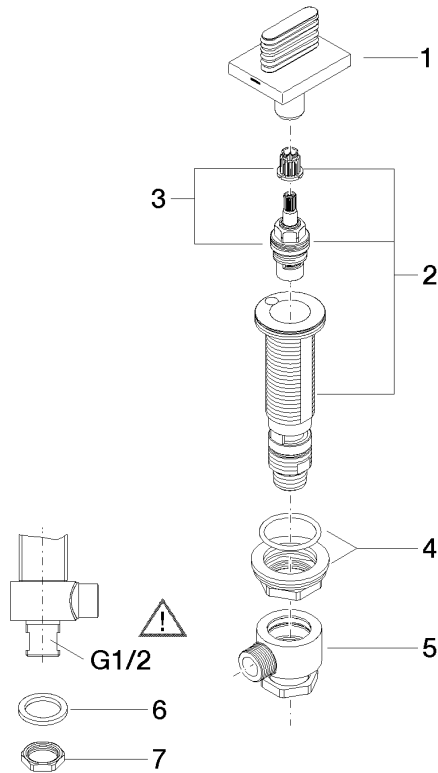
IAPMO\_6

WRAS\_240202

## CL.1 Deck valve anti-clockwise closing hot - Chrome

20 005 706 Product version from 3/9/2015

Parts for other finishes can be found here: [Brushed](#)  
[Platinum](#)



### Spare parts list

No.	Item Number	Name	Quantity used	Delivery time
1	90 20 70 055 07-00	handle ( hot )	1	10
2	04 17 11 058 52 90	side panel	1	2
3	90 90 03 152 00 90	top	1	2
4	04 23 10 032 78 90	fixing set	1	2
5	04 17 11 023 10 90	distributor	1	2
6	90 23 30 040 00-00	threaded connector	1	10
7	09 30 11 059 90	disc	1	2
8	09 23 10 012 90	nut	1	2