

VAIA Three-hole basin mixer with pop-up waste - Champagne (22kt Gold)

VAIA

20 705 809



- 165mm projection
- pivotable spout 360°
- circular, air-enriched flow
- height of mixer 144 mm
- height up to aerator 90 mm
- hole diameter valve 32 mm
- hole diameter spout 35 mm
- rosette Ø 60 mm
- max. flow 5.7 l/min
- lead-free
- This product can help a building meet the requirements of Green Building Rating Systems, e.g. LEED®, BREEAM®, DGNB
- WRAS

Only suitable for basins with an overflow.

	Champagne (22kt Gold)	20 705 809-47
	Chrome	20 705 809-00
	Brushed Platinum	20 705 809-06
	Platinum	20 705 809-08
	Dark Chrome	20 705 809-19
	Brushed Durabronze (23kt Gold)	20 705 809-28
	Brushed Bronze	20 705 809-42
	Brushed Champagne (22kt Gold)	20 705 809-46
	Brushed Dark Platinum	20 705 809-99

Recommended miscellaneous



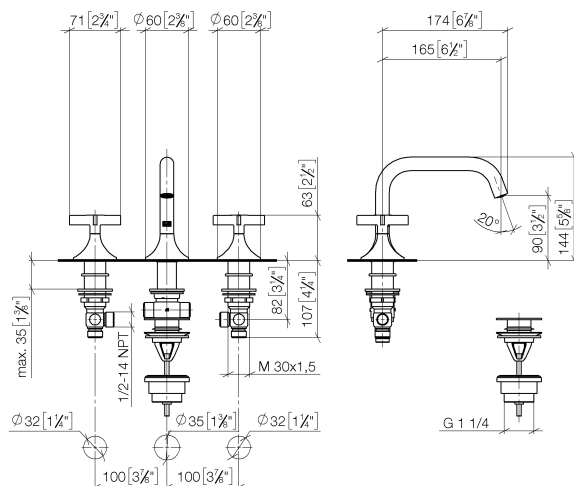
High pressure hoses -

- 2x 3/8" x 1/2" x 500mm high pressure hose

12 506 970 90

20 705 809

mm [inches]



Flow rate chart



Codes & Standards

DIN 4109

Executive Order
no. 1007

ISO 3822

Scottish Water
Byelaws

UK Water Supply
Regulations

Ü-Zeichen



VAIA Three-hole basin mixer with pop-up waste - Champagne (22kt Gold)

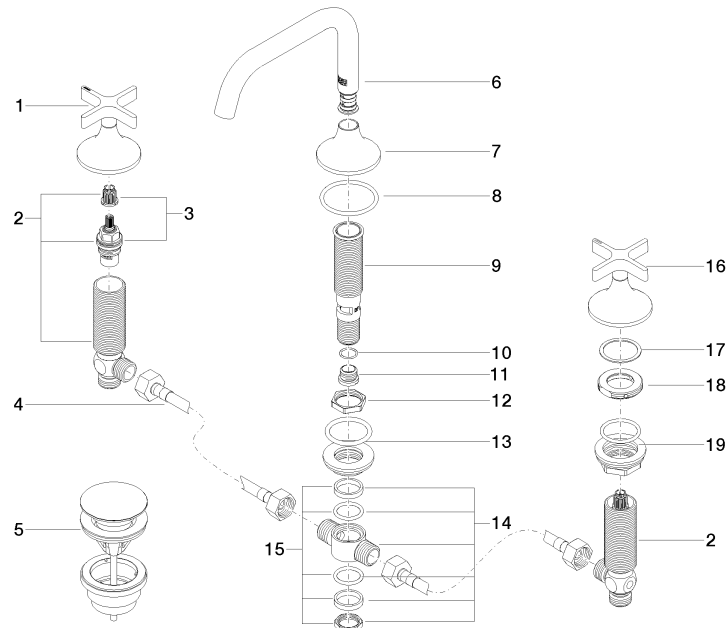
VAIA

20 705 809

Certificates and sustainability

GDV_0400	LGA_38	WRAS_2312
----------	--------	-----------

20 705 809



Spare parts list

No.	Item Number	Name	Quantity used	Delivery time
	10 09 14 10 017 90	seal	1.00	2
	8 09 14 10 084 90	seal	1.00	2
	1 90 20 80 011 00-47	handle (hot)	1.00	30
	2 04 17 11 055 51 90	side panel	2.00	2
	16 90 20 80 010 00-47	handle (cold)	1.00	30
	11 09 24 04 021 10 90	nipple	1.00	2
	3 90 90 03 151 00 90	top	2.00	2
	4 04 30 04 096 00 90	hose	2.00	2
	7 09 27 80 011-47	rosette	1.00	60
	9 90 30 01 033 00 90	base	1.00	2
	12 09 23 10 127 90	nut	1.00	2
	13 04 23 10 004 04 90	fixing set	1.00	2
	17 09 28 10 003 90	ring	2.00	2
	5 10 125 970-47	Basin Waste with push fastening 1 1/4" - Champagne (22kt Gold)	1.00	30
	6 90 28 22 368 00-47	spout	1.00	30
	19 04 23 10 032 78 90	fixing set	2.00	2
	18 09 24 01 028 90	ring	2.00	2
	15 90 23 10 012 00 90	gasket kit	1.00	2
	14 90 17 11 020 10 90	distributor	1.00	2