

TARA Three-hole basin mixer with pop-up waste - Dark Chrome

TARA

20 710 882



- 135mm projection
- pivotable spout 360°
- circular, air-enriched flow
- height of mixer 270 mm
- height up to aerator 161 mm
- hole diameter valve 32 mm
- hole diameter spout 35 mm
- rosette Ø 55 mm
- 2x screw-in M 10 x 1 pressure hose, leak-tested
- max. flow 7 l/min
- lead-free
- WRAS
- This product can help a building meet the requirements of Green Building Rating Systems, e.g. LEED®, BREEAM®, DGNB

Only suitable for basins with an overflow.

| | | |
|--|--------------------------------|---------------|
|  | Dark Chrome | 20 710 882-19 |
|  | Chrome | 20 710 882-00 |
|  | Brushed Platinum | 20 710 882-06 |
|  | Platinum | 20 710 882-08 |
|  | Brushed Durabronze (23kt Gold) | 20 710 882-28 |
|  | Matte Black | 20 710 882-33 |
|  | Brushed Bronze | 20 710 882-42 |
|  | Brushed Champagne (22kt Gold) | 20 710 882-46 |
|  | Champagne (22kt Gold) | 20 710 882-47 |
|  | Brushed Chrome | 20 710 882-93 |
|  | Brushed Dark Platinum | 20 710 882-99 |

Recommended miscellaneous



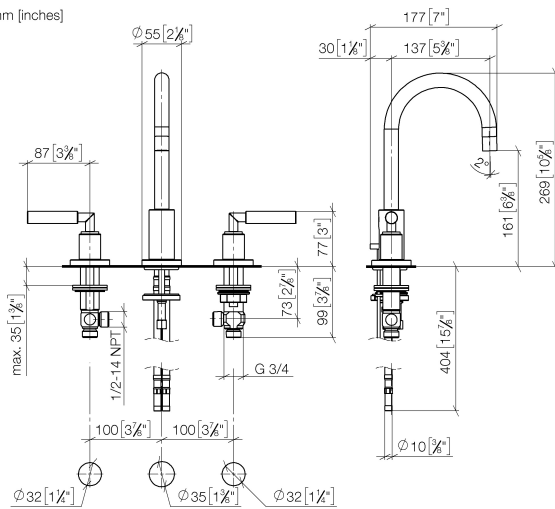
High pressure hoses -

- 2x 3/8" x 1/2" x 500mm high pressure hose

12 506 970 90

20 710 882

mm [inches]



Flow rate chart



Codes & Standards

DIN 4109

EN 200

Executive Order
no. 1007

ISO 3822

Scottish Water
Byelaws

UK Water Supply
Regulations

Ü-Zeichen

VA-Zeichen



TARA Three-hole basin mixer with pop-up waste - Dark Chrome

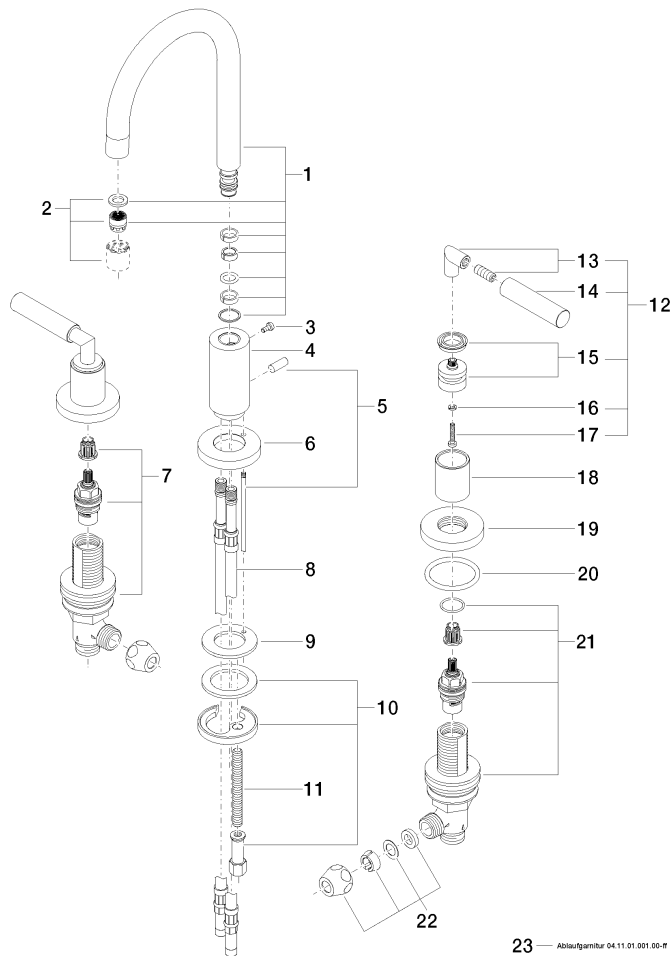
TARA

20 710 882

Certificates and sustainability

| | | | |
|--------|--------|-----------|----------|
| LGA_18 | ETA_18 | WRAS_2212 | GDV_0400 |
|--------|--------|-----------|----------|

20 710 882



23 — Ablaufgarnitur 04.11.01.001.00-IT