

## TARA Three-hole basin mixer with pop-up waste - Brushed Platinum

TARA

20 710 892 Product version from 6/30/2009 to 6/25/2021



- 135mm projection
- pivotable spout 360°
- circular, air-enriched flow
- height of mixer 270 mm
- height up to aerator 161 mm
- hole diameter valve 32 mm
- hole diameter spout 35 mm
- rosette Ø 55 mm
- 2x screw-in M 10 x 1 pressure hose, leak-tested
- max. flow 7 l/min
- lead-free
- WRAS
- This product can help a building meet the requirements of Green Building Rating Systems, e.g. LEED®, BREEAM®, DGNB

Only suitable for basins with an overflow.

|   |                                |               |
|---|--------------------------------|---------------|
|    | Brushed Platinum               | 20 710 892-06 |
|    | Chrome                         | 20 710 892-00 |
|    | Platinum                       | 20 710 892-08 |
|    | Dark Chrome                    | 20 710 892-19 |
|    | Brushed Durabronze (23kt Gold) | 20 710 892-28 |
|    | Matte Black                    | 20 710 892-33 |
|    | Brushed Bronze                 | 20 710 892-42 |
|    | Brushed Champagne (22kt Gold)  | 20 710 892-46 |
|    | Champagne (22kt Gold)          | 20 710 892-47 |
|   | Brushed Chrome                 | 20 710 892-93 |
|  | Brushed Dark Platinum          | 20 710 892-99 |

### Recommended miscellaneous



#### High pressure hoses -

- 2x 3/8" x 1/2" x 500mm high pressure hose

12 506 970 90

## TARA Three-hole basin mixer with pop-up waste - Brushed Platinum

TARA

20 710 892 Product version from 6/30/2009 to 6/25/2021



### Flow rate chart



### Codes & Standards

DIN 4109

EN 200

Executive Order  
no. 1007

ISO 3822

Scottish Water  
Byelaws

UK Water Supply  
Regulations

Ü-Zeichen

VA-Zeichen

XP P 41-280



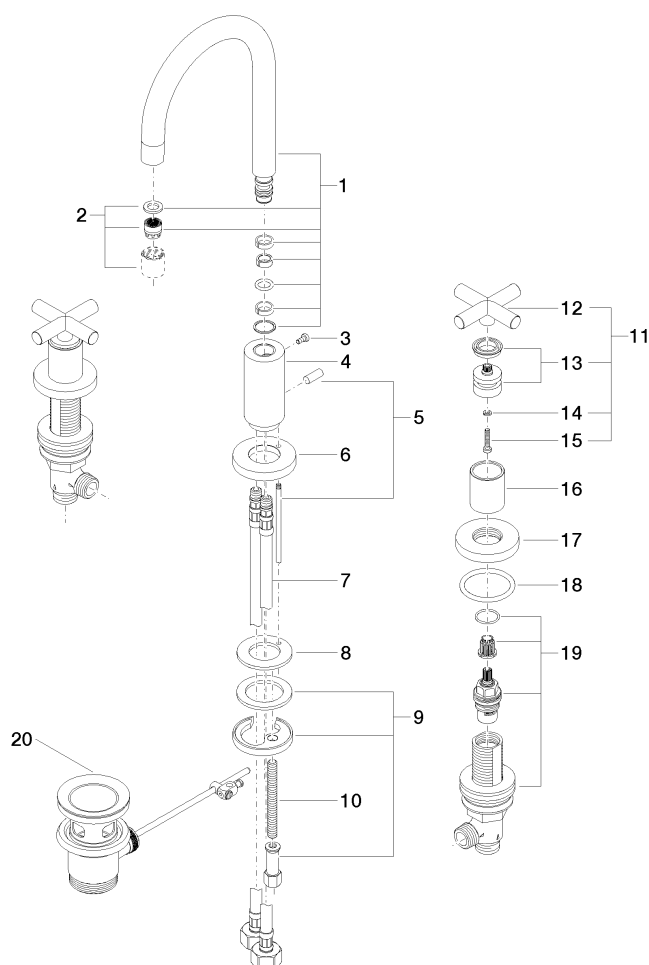
TARA Three-hole basin mixer with pop-up waste - Brushed Platinum

TARA

20 710 892    Product version from 6/30/2009 to 6/25/2021

Certificates and sustainability

|        |        |           |               |          |
|--------|--------|-----------|---------------|----------|
| LGA_18 | ETA_18 | WRAS_2212 | ACS_20 ACC LY | GDV_0400 |
|--------|--------|-----------|---------------|----------|



## Spare parts list

| No. | Item Number        | Name         | Quantity used | Delivery time |
|-----|--------------------|--------------|---------------|---------------|
| 18  | 09 27 89 105-06    | rosette      | 4.00          | 10            |
| 7   | 04 30 04 019 00 90 | hose         | 2.00          | 2             |
| 6   | 09 28 10 133-06    | ring         | 1.00          | 10            |
| 2   | 90 23 01 028 03-06 | aerator      | 1.00          | 10            |
| 12  | 09 20 89 010-06    | handle       | 2.00          | 60            |
| 5   | 04 20 89 030 80-06 | pull-rod     | 1.00          | 10            |
| 13  | 90 12 12 007 00-06 | base         | 2.00          | 10            |
| 10  | 09 31 11 011 90    | pin          | 1.00          | 2             |
| 16  | 09 21 02 140-06    | sleeve       | 2.00          | 10            |
| 19  | 90 17 11 040 51 90 | side panel   | 2.00          | 2             |
| 3   | 09 30 30 057 90    | screw        | 1.00          | 2             |
| 9   | 04 30 11 038 00 90 | fixing set   | 1.00          | 2             |
| 1   | 90 28 22 217 01-06 | spout        | 1.00          | 10            |
| 4   | 09 11 10 087 10-06 | connection   | 1.00          | 10            |
| 8   | 09 14 05 047 90    | seal         | 1.00          | 2             |
| 20  | 90 11 01 001 00-06 | pop-up waste | 1.00          | 10            |
| 11  | 90 20 89 010 10-06 | handle       | 2.00          | 10            |
| 15  | 90 30 30 075 00 90 | screw        | 2.00          | 2             |
| 14  | 90 30 11 029 00 90 | disc         | 2.00          | 2             |