

META Three-hole basin mixer with pop-up waste - Chrome

META

20 713 661 Product version from 7/1/2023



- 168mm projection
- pivotable spout 360°
- circular, air-enriched flow
- height of mixer 280 mm
- height up to aerator 191 mm
- hole diameter valve 32 mm
- hole diameter spout 35 mm
- rosette Ø 60 mm
- 2x screw-in M 8 x 1 pressure hose, leak-tested
- max. flow 5.7 l/min
- lead-free
- This product can help a building meet the requirements of Green Building Rating Systems, e.g. LEED®, BREEAM®, DGNB
- WRAS

Only suitable for basins with an overflow.

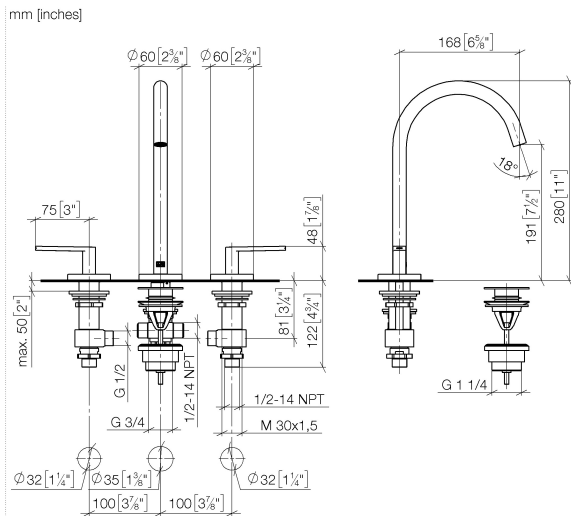
	Chrome	20 713 661-00
	Brushed Platinum	20 713 661-06
	Dark Chrome	20 713 661-19
	Light Gold	20 713 661-26
	Brushed Light Gold	20 713 661-27
	Matte Black	20 713 661-33
	Brushed Bronze	20 713 661-42
	Brushed Champagne (22kt Gold)	20 713 661-46
	Champagne (22kt Gold)	20 713 661-47
	Brushed Chrome	20 713 661-93
	Brushed Dark Platinum	20 713 661-99

Recommended miscellaneous

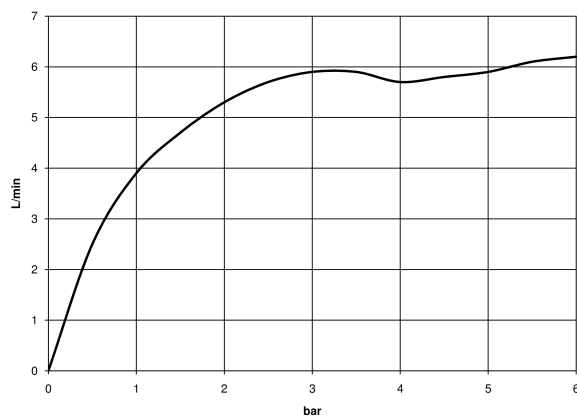


High pressure hoses -
• 2x 3/8" x 1/2" x 500mm high pressure hose

12 506 970 90



Flow rate chart



Codes & Standards

DIN 4109

EN 200

ISO 3822

Scottish Water
Byelaws

UK Water Supply
Regulations

Ü-Zeichen



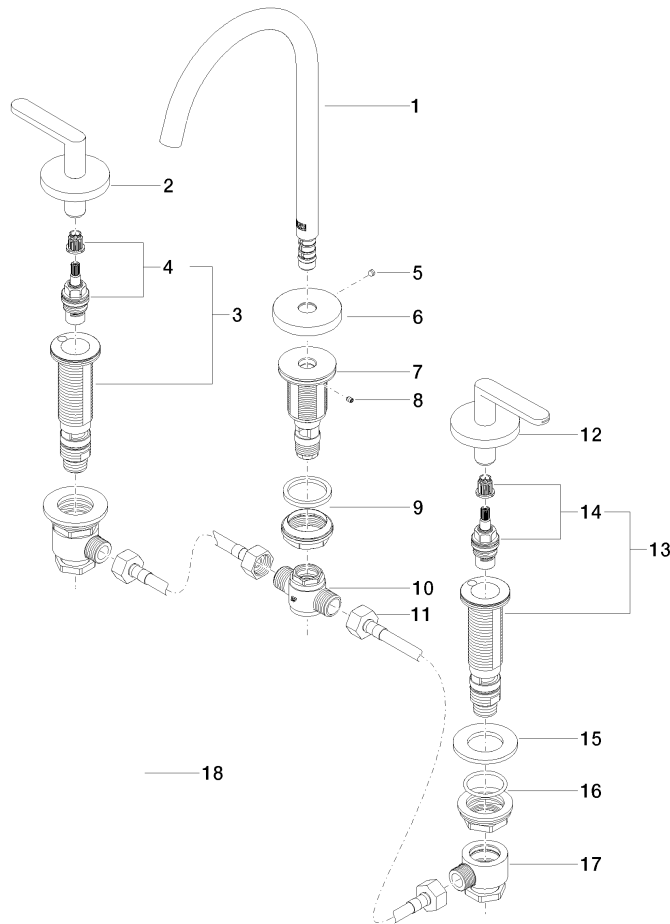
META Three-hole basin mixer with pop-up waste - Chrome

META

20 713 661 Product version from 7/1/2023

Certificates and sustainability

DVGW_DW- 6501DN0	LGA_29	WRAS_2001
---------------------	--------	-----------



Spare parts list

No.	Item Number	Name	Quantity used	Delivery time
17	04 17 11 023 10 90	distributor	2.00	2
3	04 17 11 058 32 90	side panel	1.00	2
18	10 125 970-00	Basin Waste with push fastening 1 1/4" - Chrome	1.00	2
2	90 20 66 016 00-00	handle (hot)	1.00	10
5	09 31 11 112 90	pin	1.00	60
11	04 30 04 096 00 90	hose	2.00	2
7	09 30 01 287 90	connection	1.00	60
16	04 23 10 032 78 90	fixing set	2.00	2
9	04 23 10 044 07 90	fixing set	1.00	2
15	09 30 11 099 90	disc	2.00	2
12	90 20 66 015 00-00	handle (cold)	1.00	10
6	09 27 66 002-00	rosette	1.00	60
8	09 31 11 044 90	pin	1.00	2
13	04 17 11 058 33 90	side panel	1.00	2
1	90 28 22 325 00-00	spout	1.00	10
14	90 90 03 132 00 90	top	1.00	2
4	90 90 03 133 00 90	top	1.00	2
10	90 17 11 020 10 90	distributor	1.00	2