

META Three-hole basin mixer with pop-up waste - Brushed Dark Brass

META

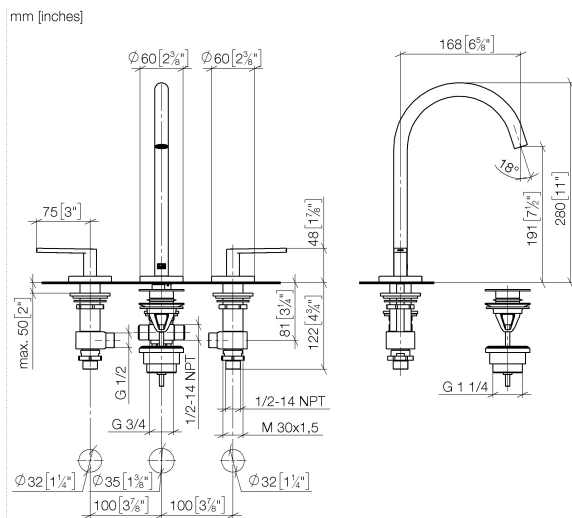
20 713 661 Product version from 7/1/2023



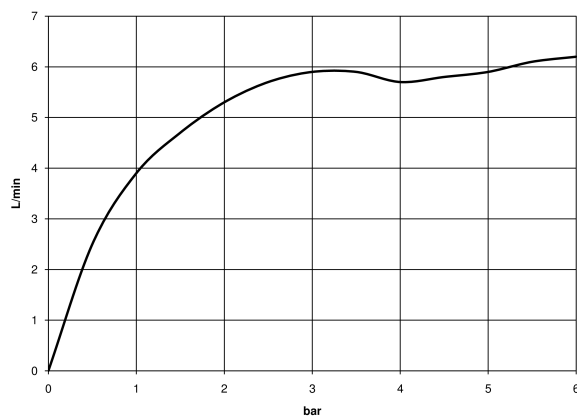
- 168mm projection
 - pivotable spout 360°
 - circular, air-enriched flow
 - height of mixer 280 mm
 - height up to aerator 191 mm
 - hole diameter valve 32 mm
 - hole diameter spout 35 mm
 - rosette Ø 60 mm
 - 2x screw-in M 8 x 1 pressure hose, leak-tested
 - max. flow 5.7 l/min
 - lead-free
 - This product can help a building meet the requirements of Green Building Rating Systems, e.g. LEED®, BREEAM®, DGNB
 - WRAS
- Only suitable for basins with an overflow.

	Brushed Dark Brass	20 713 661-39
	Chrome	20 713 661-00
	Brushed Platinum	20 713 661-06
	Dark Chrome	20 713 661-19
	Light Gold	20 713 661-26
	Brushed Light Gold	20 713 661-27
	Matte Black	20 713 661-33
	Brushed Bronze	20 713 661-42
	Brushed Champagne (22kt Gold)	20 713 661-46
	Champagne (22kt Gold)	20 713 661-47
	Brushed Chrome	20 713 661-93
	Brushed Dark Platinum	20 713 661-99

20 713 661 Product version from 7/1/2023



Flow rate chart



Codes & Standards

DIN 4109

ISO 3822

Scottish Water
Byelaws

UK Water Supply
Regulations

Ü-Zeichen



META Three-hole basin mixer with pop-up waste - Brushed Dark Brass

META

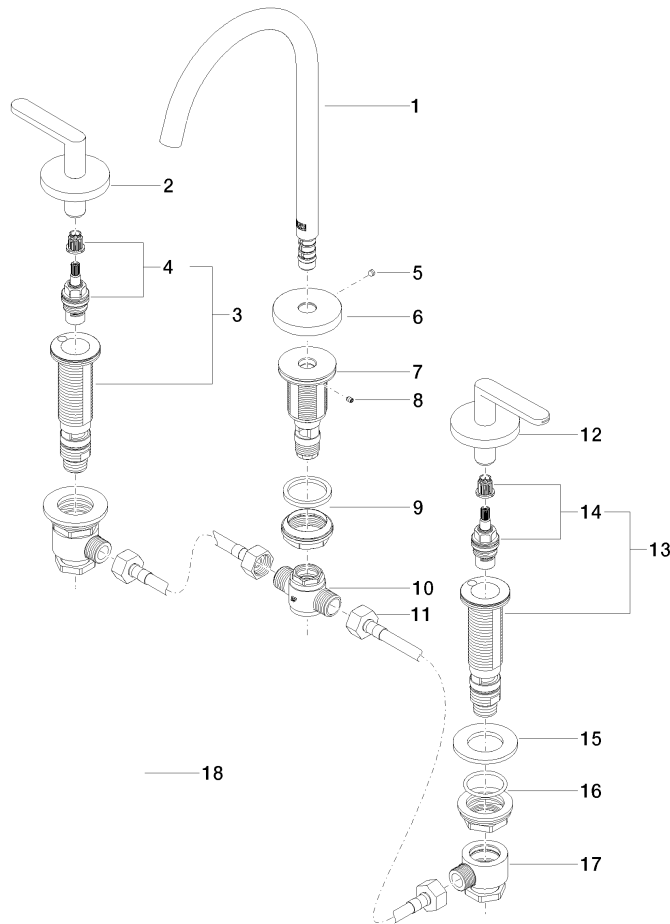
20 713 661 Product version from 7/1/2023

Certificates and sustainability

LGA_29

WRAS_250502

Parts for other
finishes can be found
here: [Chrome](#)



Spare parts list

No.	Item Number	Name	Quantity used	Delivery time
	6 09 27 66 002-39	rosette	1.00	60
	5 09 31 11 112 90	pin	1.00	60
	13 04 17 11 058 33 90	side panel	1.00	2
	3 04 17 11 058 32 90	side panel	1.00	2
	18 10 125 970-39	Basin Waste with push fastening 1 1/4" - Brushed Dark Brass	1.00	30
	1 90 28 22 325 00-39	spout	1.00	30
	15 09 30 11 099 90	disc	2.00	2
	4 90 90 03 133 00 90	top	1.00	2
	9 04 23 10 044 07 90	fixing set	1.00	2
	10 90 17 11 020 10 90	distributor	1.00	2
	17 04 17 11 023 10 90	distributor	2.00	2
	11 04 30 04 096 00 90	hose	2.00	2
	16 04 23 10 032 78 90	fixing set	2.00	2
	12 90 20 66 015 00-39	handle (cold)	1.00	30
	14 90 90 03 132 00 90	top	1.00	2
	7 09 30 01 287 90	connection	1.00	60
	2 90 20 66 016 00-39	handle (hot)	1.00	30
	8 09 31 11 044 90	pin	1.00	2