

## IMO Three-hole basin mixer with pop-up waste - Chrome

---

20 713 670 Product version from 4/1/2014



- 165mm projection
- fixed spout
- rectangular, air-enriched flow
- height of mixer 220 mm
- height up to aerator 170 mm
- hole diameter valve 32 mm
- hole diameter spout 35 mm
- rosette 60 x 60 mm
- 2x screw-in M 10 x 1 pressure hose, leak-tested
- max. flow 5 l/min
- lead-free
- WRAS
- This product can help a building meet the requirements of Green Building Rating Systems, e.g. LEED®, BREEAM®, DGNB

Only suitable for basins with an overflow.

### Recommended miscellaneous

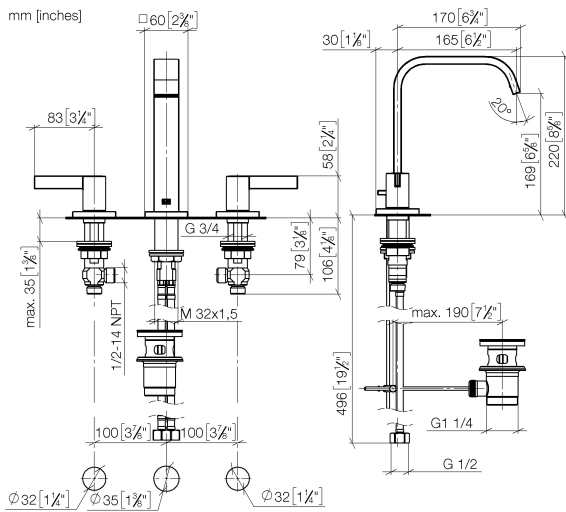
---



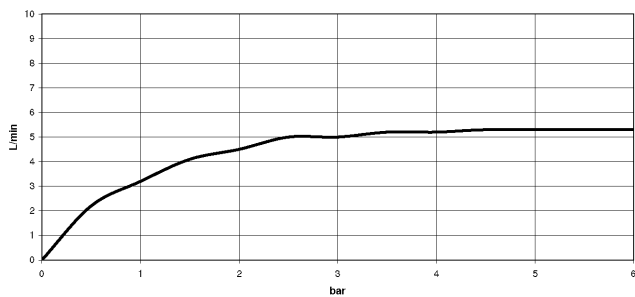
**High pressure hoses -** 12 506 970 90  
 • 2x 3/8" x 1/2" x 500mm high pressure hose

## IMO Three-hole basin mixer with pop-up waste - Chrome

20 713 670 Product version from 4/1/2014



### Flow rate chart



### Codes & Standards

DIN 4109

ISO 3822

Scottish Water  
Byelaws

UK Water Supply  
Regulations

### Ü-Zeichen



## IMO Three-hole basin mixer with pop-up waste - Chrome

---

20 713 670 Product version from 4/1/2014

### Certificates

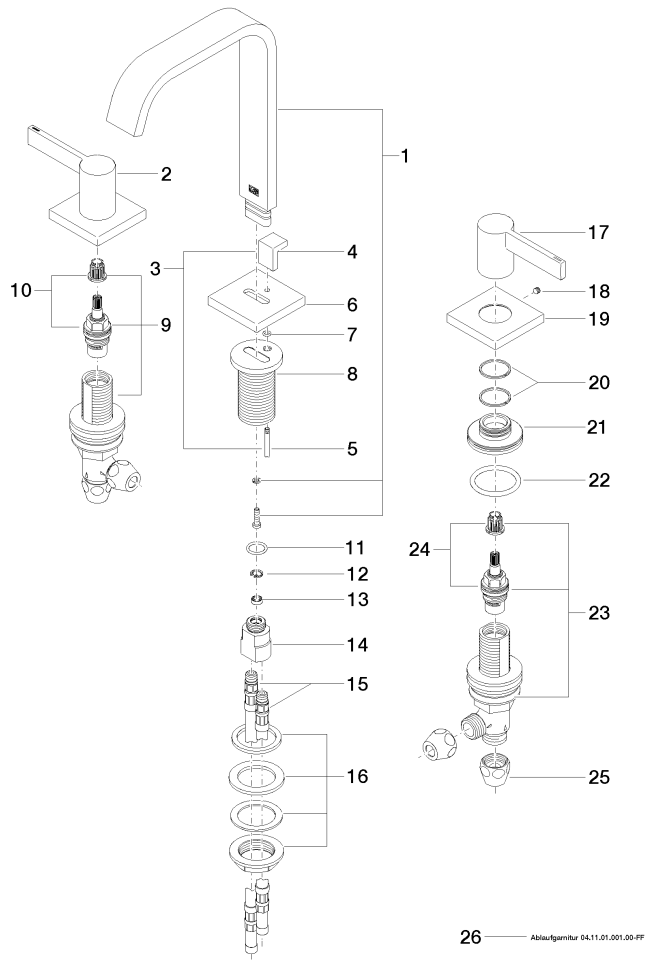
---

WRAS\_2212

LGA\_28

**IMO Three-hole basin mixer with pop-up waste - Chrome**

20 713 670 Product version from 4/1/2014





## IMO Three-hole basin mixer with pop-up waste - Chrome

20 713 670 Product version from 4/1/2014

### Spare parts list

No.	Item Number	Name	Quantity used	Delivery time
1	90 28 22 267 00-00	spout	1	10
2	09 20 67 011-00	handle ( hot )	1	10
3	04 20 78 030 80-00	pull-rod	1	10
4	09 20 78 030-00	handle	1	10
5	09 31 09 080-00	pull-rod	1	10
6	09 27 78 032-00	rosette	1	10
7	09 14 10 166 90	seal	1	2
8	09 11 10 054 10 90	connection	1	2
9	90 17 11 040 53 90	side panel	1	2
10	90 90 03 153 00 90	top	1	2
11	09 14 10 130 90	seal	1	2
12	09 16 01 016 90	ring	1	2
13	09 23 01 033 90	flow reducer	1	2
14	09 11 10 055 10 90	connection	1	2
15	04 30 04 016 00 90	hose	2	60
16	04 23 10 009 01 90	fixing set	1	2
17	09 20 67 012-00	handle ( cold )	1	10
18	90 31 11 112 00 90	pin	2	2
19	09 27 22 043-00	rosette	2	10
20	09 14 15 014 90	ring	4	2
21	09 30 11 198-00	disc	2	10
22	09 14 10 036 90	seal	1	2
23	90 17 11 040 52 90	side panel	1	2
24	90 90 03 152 00 90	top	1	2
25	90 23 30 040 00-00	threaded connector	4	10
26	90 11 01 001 00-00	pop-up waste	1	10