

MADISON Single-hole basin mixer with pop-up waste - Chrome



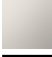



MADISON

22 500 360 Product version from 7/31/2009 to 9/7/2021



- 130mm projection
- fixed spout
- circular, air-enriched flow
- height of mixer 100 mm
- height up to aerator 65 mm
- hole diameter 35 mm
- 2x screw-in M 10 x 1 pressure hose, leak-tested
- max. flow 7 l/min
- lead-free
- This product can help a building meet the requirements of Green Building Rating Systems, e.g. LEED®, BREEAM®, DGNB
- WRAS

Only suitable for basins with an overflow.

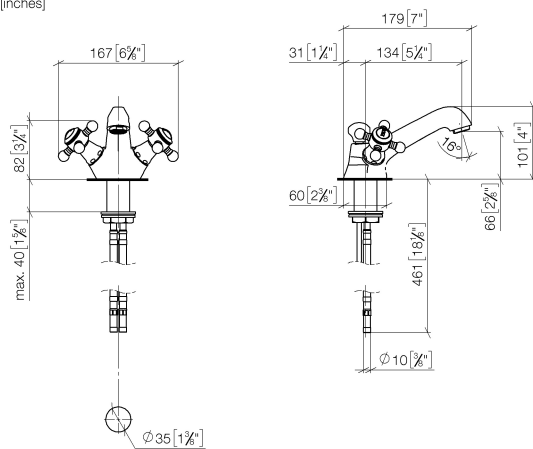
| | | |
|---|-------------------------------|---------------|
|  | Chrome | 22 500 360-00 |
|  | Brushed Platinum | 22 500 360-06 |
|  | Platinum | 22 500 360-08 |
|  | Durabrand (23kt Gold) | 22 500 360-09 |
|  | Brushed Durabrand (23kt Gold) | 22 500 360-28 |
|  | Brushed Dark Platinum | 22 500 360-99 |

MADISON Single-hole basin mixer with pop-up waste - Chrome

MADISON

22 500 360 Product version from 7/31/2009 to 9/7/2021

mm [inches]



Flow rate chart



Codes & Standards

| | | | |
|--------------------------------|-----------|------------|---------------------------|
| DIN 4109 | EN 200 | ISO 3822 | Scottish Water Byelaws |
| UK Water Supply Regulations | Ü-Zeichen | VA-Zeichen | |



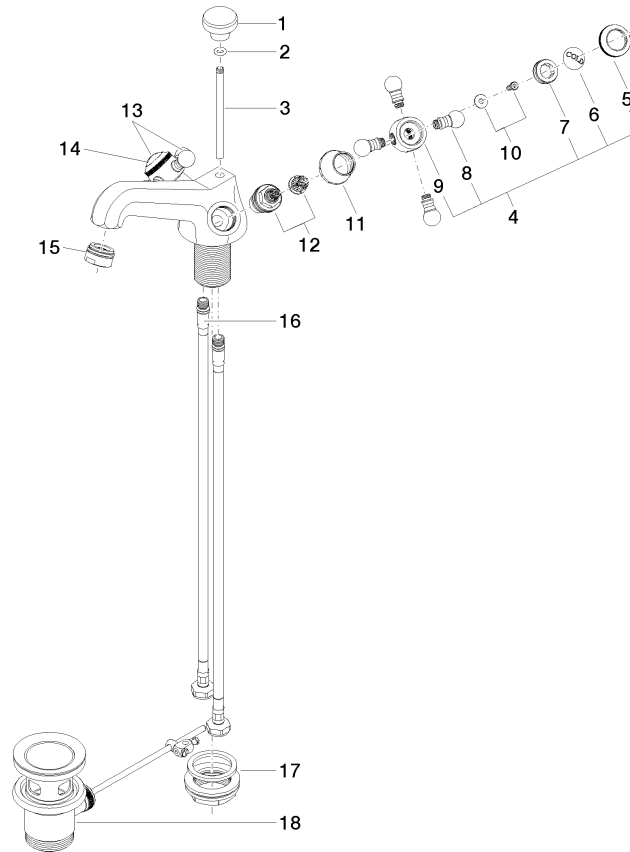
MADISON Single-hole basin mixer with pop-up waste - Chrome

MADISON

22 500 360 Product version from 7/31/2009 to 9/7/2021

Certificates and sustainability

WRAS_2107 LGA_8 ETA_17



Spare parts list

| No. | Item Number | Name | Quantity used | Delivery time |
|-----|-----------------------|-----------------|---------------|---------------|
| | 6 09 26 01 010 90 | accessories | 1.00 | 2 |
| | 15 90 23 01 118 01-00 | aerator | 1.00 | 10 |
| | 12 90 90 03 151 00 90 | top | 2.00 | 2 |
| | 13 04 20 36 002 07-00 | handle (hot) | 1.00 | 10 |
| | 3 09 31 09 004-00 | pull-rod | 1.00 | 10 |
| | 14 09 26 01 011 90 | accessories | 1.00 | 2 |
| | 4 04 20 36 002 06-00 | handle (cold) | 1.00 | 10 |
| | 7 09 20 83 006 90 | handle | 2.00 | 2 |
| | 1 09 20 36 030-00 | handle | 1.00 | 10 |
| | 9 09 20 36 002-00 | handle | 2.00 | 10 |
| | 10 04 30 30 029 00 90 | fixing set | 2.00 | 2 |
| | 16 04 30 04 104 00 90 | hose | 2.00 | 2 |
| | 17 04 23 10 009 01 90 | fixing set | 1.00 | 2 |
| | 8 09 20 36 004-00 | handle | 8.00 | 10 |
| | 5 09 20 36 005-00 | handle | 2.00 | 10 |
| | 11 09 21 02 055-00 | cover | 2.00 | 10 |
| | 18 90 11 01 001 00-00 | pop-up waste | 1.00 | 10 |
| | 2 90 14 10 062 00 90 | seal | 1.00 | 2 |