

## TARA Single-hole basin mixer with stand pipe without pop-up waste - Brushed Champagne (22kt Gold)

TARA

22 585 892 Product version from 4/1/2024



- 201mm projection
- pivotable spout 360°
- circular, air-enriched flow
- total height 1095 - 1166 mm
- height up to aerator 1025 – 1095 mm
- rosette Ø 135 mm
- max. flow 5.7 l/min
- lead-free
- This product can help a building meet the requirements of Green Building Rating Systems, e.g. LEED®, BREEAM®, DGNB
- WRAS

	Brushed Champagne (22kt Gold)	22 585 892-46
	Chrome	22 585 892-00
	Brushed Platinum	22 585 892-06
	Platinum	22 585 892-08
	Dark Chrome	22 585 892-19
	Brushed Durabronze (23kt Gold)	22 585 892-28
	Matte Black	22 585 892-33
	Brushed Dark Brass	22 585 892-39
	Brushed Bronze	22 585 892-42
	Champagne (22kt Gold)	22 585 892-47
	Brushed Chrome	22 585 892-93
	Brushed Dark Platinum	22 585 892-99

### Required miscellaneous



- Concealed floor mounting -**
- max. recess depth 150 mm
  - min. recess depth 80 mm

35 945 970 90

# TARA Single-hole basin mixer with stand pipe without pop-up waste - Brushed Champagne (22kt Gold)

TARA

22 585 892 Product version from 4/1/2024  
mm [inches]



## Flow rate chart



## Codes & Standards

DIN 4109

ISO 3822

Scottish Water  
Byelaws

UK Water Supply  
Regulations

## Ü-Zeichen



## TARA Single-hole basin mixer with stand pipe without pop-up waste - Brushed Champagne (22kt Gold)

---

TARA

22 585 892 Product version from 4/1/2024

Certificates and sustainability

---

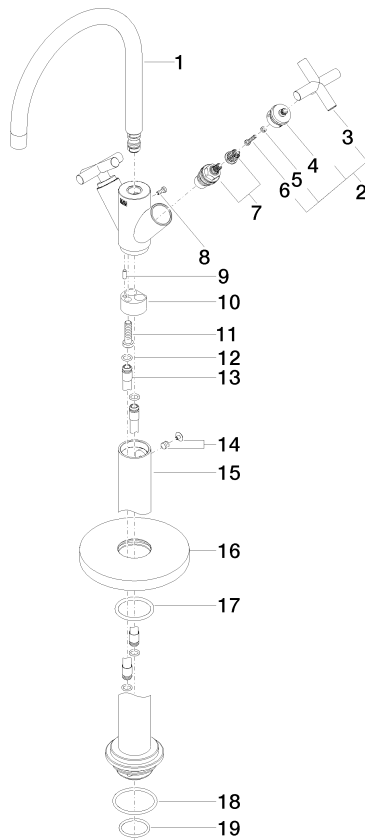
LGA\_38

WRAS\_2304

# TARA Single-hole basin mixer with stand pipe without pop-up waste - Brushed Champagne (22kt Gold)

TARA

22 585 892 Product version from 4/1/2024



## Spare parts list

No.	Item Number	Name	Quantity used	Delivery time
	11 09 30 30 047 90	screw	1.00	2
	16 09 27 88 011-46	rosette	1.00	60
	18 09 14 10 084 90	seal	1.00	2
	9 09 31 11 040 90	pin	1.00	2
	3 09 20 89 010-46	handle	2.00	30
	7 90 90 03 151 00 90	top	2.00	2
	14 04 31 11 002 00 90	pin	1.00	2
	10 09 24 03 193 90	adaptor	1.00	2
	12 09 14 10 139 90	seal	4.00	2
	15 04 28 22 028 00-46	pipe	1.00	60
	19 09 14 10 018 90	seal	1.00	2
	1 90 28 22 214 02-46	spout	1.00	30
	4 90 12 12 219 00-46	base	2.00	30
	13 04 28 22 022 10 90	connection	2.00	2
	8 09 30 30 054 90	screw	1.00	2
	17 90 14 10 043 00 90	seal	1.00	2
	6 90 30 30 075 00 90	screw	2.00	2
	2 90 20 89 010 10-46	handle	2.00	30
	5 90 30 11 029 00 90	disc	2.00	2