

Shower system with single-lever shower mixer without hand shower - Brushed Platinum SERIES SPECIFIC

26 024 661 Product version from 10/1/2023



- shower with fixed riser projection 450mm
- pivotable 180°
- overhead shower: rain flow
- rain shower Ø 300 mm
- rain shower with anti-scale system
- max. rainshower flow 14 l/min
- Function from: 10 l/min
- shower holder with rosette Ø 78mm
- slide-on rosettes Ø 55 mm
- 1500 mm metal shower hose
- height of fittings up to top edge of elbow 2280mm
- height of fittings up to rain shower (bottom edge) 1940mm
- automatic diverter for fixed-riser shower/hand shower
- Pipe diameter 20 mm
- quick clearing
- WRAS

This article does not include a hand shower!

Water carrying concealed rough parts on lower wall fixing.

Recommended spacing from bottom edge of shower stem to floor 92 mm.

Intrinsic protection against back flow.

This article does not include a hand shower!

Water carrying concealed rough parts on lower wall fixing.

Recommended spacing from bottom edge of shower stem to floor 92 mm.


Intrinsic protection against back flow.

	Brushed Platinum	26 024 661-06
	Chrome	26 024 661-00
	Platinum	26 024 661-08
	Dark Chrome	26 024 661-19
	Dark Chrome	26 024 661-19 0010
	Light Gold	26 024 661-26
	Brushed Light Gold	26 024 661-27
	Brushed Durabronze (23kt Gold)	26 024 661-28
	Matte Black	26 024 661-33
	Brushed Bronze	26 024 661-42
	Brushed Champagne (22kt Gold)	26 024 661-46
	Champagne (22kt Gold)	26 024 661-47
	Brushed Chrome	26 024 661-93
	Brushed Dark Platinum	26 024 661-99


Shower system with single-lever shower mixer without hand shower - Brushed Platinum SERIES SPECIFIC

26 024 661 Product version from 10/1/2023

Required miscellaneous

	Concealed wall mounting - •max. recess depth 103 mm •min. recess depth 78 mm	35 003 970 90
---	---	---------------


Required miscellaneous

	Hand shower FlowReduce - Brushed Platinum	28 012 979-06 0010
---	--	-----------------------


Required miscellaneous

	Hand shower - Brushed Platinum	28 016 979-06
---	---------------------------------------	---------------

Required miscellaneous

	Hand shower FlowReduce - Brushed Platinum	28 016 979-06 0010
---	--	-----------------------


Required miscellaneous

	Hand shower FlowReduce - Brushed Platinum	28 018 979-06 0010
---	--	-----------------------

Required miscellaneous

	SERIES-VARIOUS Hand shower FlowReduce - Brushed Platinum	28 025 979-06 0010
---	---	-----------------------

Required miscellaneous

	Hand shower - Brushed Platinum	28 017 979-06
---	---------------------------------------	---------------


Required miscellaneous

	Hand shower - Brushed Platinum	28 018 979-06
---	---------------------------------------	---------------

Required miscellaneous

	Hand shower - Brushed Platinum	28 015 979-06
---	---------------------------------------	---------------

Required miscellaneous

	Hand shower - Brushed Platinum •spray head Ø 120mm •Hand shower see page {PAGE} •Four settings: COMPACT RAIN, COMPACT SOFT FLOW, COMPACT AQUAPRESSURE FLOW, COMPACT CASCADE, max. flow rate l/min (at 3 bar)	28 012 979-06
---	--	---------------

Required miscellaneous

	SERIES-VARIOUS Hand shower FlowReduce - Brushed Platinum	28 029 979-06 0010
---	---	-----------------------

Required miscellaneous

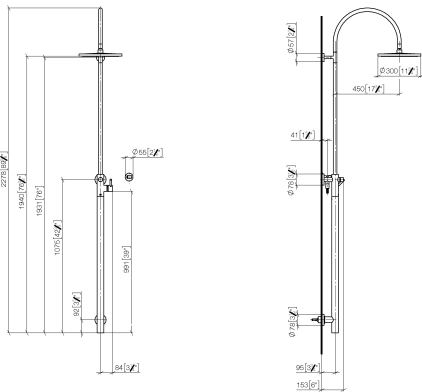
	SERIES-VARIOUS Hand shower FlowReduce - Brushed Platinum	28 027 979-06 0010
---	---	-----------------------

Shower system with single-lever shower mixer without hand shower - Brushed Platinum

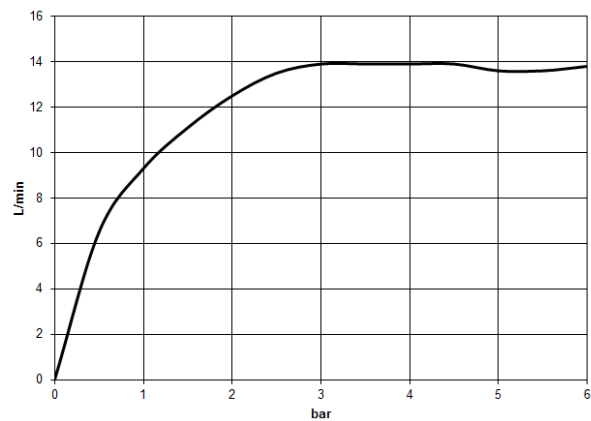
SERIES SPECIFIC

26 024 661 Product version from 10/1/2023

mm [inches]



Flow rate chart



Codes & Standards

DIN 4109

EN 1717

ISO 3822

Scottish Water
Byelaws

UK Water Supply
Regulations

Ü-Zeichen



Shower system with single-lever shower mixer without hand shower - Brushed SERIES SPECIFIC
Platinum

26 024 661 Product version from 10/1/2023

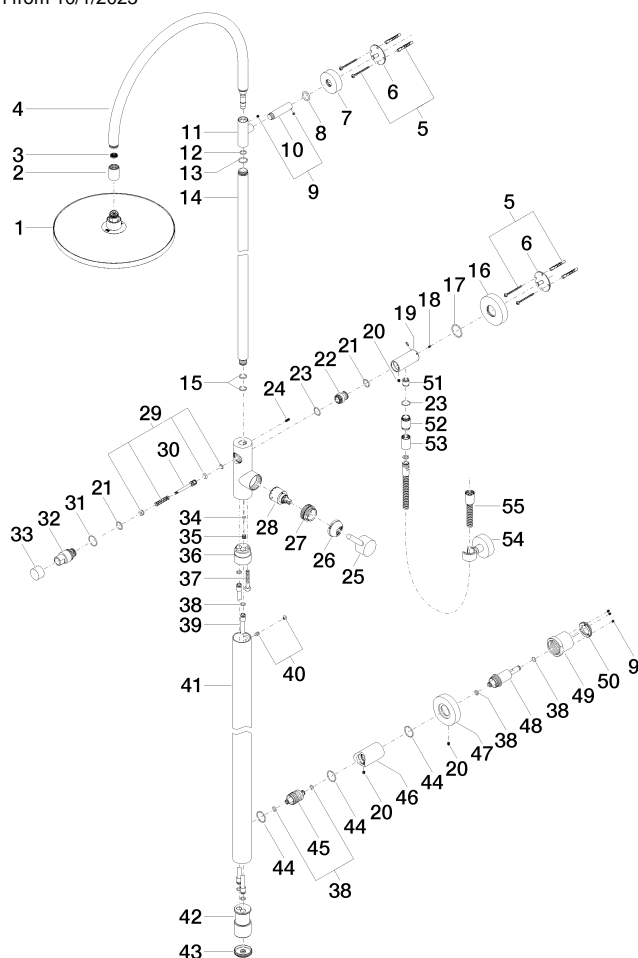
Certificates and sustainability

Belgaqua_21-023-2 WRAS_2212 LGA_29

Shower system with single-lever shower mixer without hand shower - Brushed Platinum

SERIES SPECIFIC

26 024 661 Product version from 10/1/2023



Spare parts list

No.	Item Number	Name	Quantity used	Delivery time
4	90 28 22 082 00-06	spout	1.00	-
Spare part can no longer be ordered, please order the replacement item				
25	90 20 66 017 00-06	handle	1.00	10
30	09 31 09 102 20-06	pull-rod	1.00	-
Spare part can no longer be ordered, please order the replacement item				
36	09 24 03 149 10-06	adaptor	1.00	-
Spare part can no longer be ordered, please order the replacement item				
7	09 27 89 000-06	rosette	1.00	10
29	90 16 02 023 00 90	spring	1.00	2
19	09 11 10 081 20-06	connection	1.00	10
54	28 050 920-06	holder	1.00	-
Spare part can no longer be ordered, please order the replacement item				
17	09 14 10 101 90	seal	1.00	2
26	09 28 30 042-06	cover	1.00	10
43	09 21 02 132-06	lid	1.00	10
52	09 24 03 115 20-06	nipple	1.00	10
27	09 24 04 341 90	nut	1.00	60
32	09 21 34 081 20-06	nipple	1.00	10



Shower system with single-lever shower mixer without hand shower - Brushed Platinum SERIES SPECIFIC

26 024 661	Product version from 10/1/2023			
47	09 27 88 008-06	rosette	1.00	10
5	05 30 31 025 00 90	fixing set	2.00	2
3	09 23 01 039 90	sieve	1.00	2
14	04 28 22 134 20-06	pipe	1.00	10
45	09 24 04 215 20 90	nipple	1.00	2
41	04 28 22 034 00-06	pipe	1.00	10
49	09 21 02 128 90	sleeve	1.00	2
55	90 30 02 072 00-06	Metal shower hose 1/2" x 3/8" x 1250 mm - Brushed Platinum	1.00	10
16	09 27 88 010-06	rosette	1.00	10
18	09 31 11 061 90	pin	2.00	2
40	04 31 20 034 00 90	plug	1.00	2
28	90 15 05 064 00 90	cartridge	1.00	2
20	09 31 11 049 90	pin	3.00	2
38	09 14 10 139 90	seal	6.00	2
13	09 14 10 122 90	seal	1.00	2
2	09 24 03 163 20-06	adaptor	1.00	10
34	09 14 10 132 90	seal	1.00	2
6	09 30 11 103 90	holder	2.00	2
8	09 14 10 006 90	seal	1.00	2
35	09 31 20 027 10-00	plug	1.00	10
33	09 20 88 002-06	handle	1.00	10
39	04 28 22 038 00 90	connection	2.00	2
1	04 12 05 091 00-06	shower	1.00	10
11	09 17 11 049-06	holder	1.00	10
24	09 31 11 024 90	pin	1.00	2
37	09 30 30 111 90	screw	1.00	2
31	09 14 10 112 90	seal	1.00	2
42	09 17 11 024 20 90	distributor	1.00	60
10	09 11 10 083-06	connection	1.00	10
46	09 11 10 080 20-06	connection	1.00	10
48	09 24 04 210 10 90	nipple	1.00	2
22	09 24 03 162 20 90	nipple	1.00	2
50	09 24 77 002 90	nut	1.00	2
23	90 14 10 032 00 90	seal	2.00	2
53	90 21 02 069 00-06	cover	1.00	10
12	90 14 10 077 00 90	seal	1.00	2
44	90 14 10 063 00 90	seal	3.00	2
9	90 31 11 030 00 90	pin	1.00	2
15	90 14 10 055 00 90	seal	2.00	2
51	90 23 01 141 00 90	back-flow preventer	1.00	2
21	90 14 10 010 00 90	seal	2.00	2