

# Shower system with single-lever shower mixer without hand shower - Brushed Light Gold SERIES SPECIFIC

26 024 661 Product version from 10/1/2023



- shower with fixed riser projection 450mm
- pivotable 180°
- overhead shower: rain flow
- rain shower Ø 300 mm
- rain shower with anti-scale system
- max. rainshower flow 14 l/min
- Function from: 10 l/min
- shower holder with rosette Ø 78mm
- slide-on rosettes Ø 55 mm
- 1500 mm metal shower hose
- height of fittings up to top edge of elbow 2280mm
- height of fittings up to rain shower (bottom edge) 1940mm
- automatic diverter for fixed-riser shower/hand shower
- Pipe diameter 20 mm
- quick clearing
- WRAS

**This article does not include a hand shower!**

**Water carrying concealed rough parts on lower wall fixing.**

**Recommended spacing from bottom edge of shower stem to floor 92 mm.**

**Intrinsic protection against back flow.**

This article does not include a hand shower!

Water carrying concealed rough parts on lower wall fixing.

Recommended spacing from bottom edge of shower stem to floor 92 mm.

Intrinsic protection against back flow.

|   |                                |                    |
|---|--------------------------------|--------------------|
|    | Brushed Light Gold             | 26 024 661-27      |
|    | Chrome                         | 26 024 661-00      |
|    | Brushed Platinum               | 26 024 661-06      |
|    | Platinum                       | 26 024 661-08      |
|    | Dark Chrome                    | 26 024 661-19      |
|    | Dark Chrome                    | 26 024 661-19 0010 |
|    | Light Gold                     | 26 024 661-26      |
|    | Brushed Durabronze (23kt Gold) | 26 024 661-28      |
|   | Matte Black                    | 26 024 661-33      |
|  | Brushed Bronze                 | 26 024 661-42      |
|  | Brushed Champagne (22kt Gold)  | 26 024 661-46      |
|  | Champagne (22kt Gold)          | 26 024 661-47      |
|  | Brushed Chrome                 | 26 024 661-93      |
|  | Brushed Dark Platinum          | 26 024 661-99      |

## Required miscellaneous



**Concealed wall mounting -** 35 003 970 90  
 • min. recess depth 78 mm  
 • max. recess depth 103 mm

## Required miscellaneous



**Hand shower FlowReduce -** 28 018 979-27  
**Brushed Light Gold** 0010

## Required miscellaneous

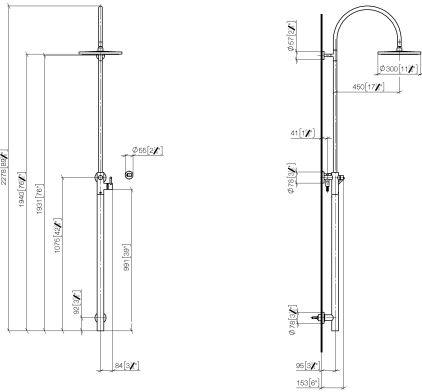


**SERIES-VARIOUS Hand shower** 28 029 979-27  
**FlowReduce - Brushed Light Gold** 0010

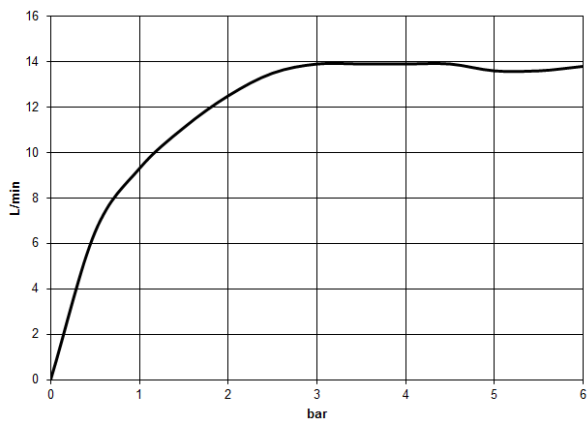
Shower system with single-lever shower mixer without hand shower - Brushed Light Gold

26 024 661 Product version from 10/1/2023

mm [inches]



### Flow rate chart



## Codes & Standards

DIN 4109

ISO 3822

# Scottish Water Byelaws

UK Water Supply Regulations

## Ü-Zeichen



## Shower system with single-lever shower mixer without hand shower - Brushed Light Gold SERIES SPECIFIC

---

26 024 661 Product version from 10/1/2023

Certificates and sustainability

---

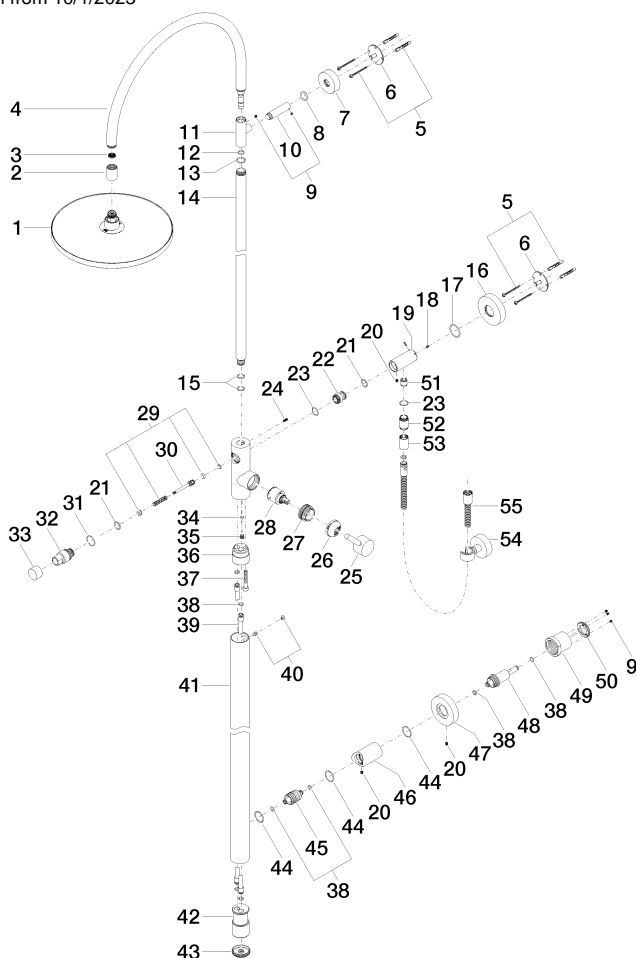
WRAS\_2212

LGA\_29

# Shower system with single-lever shower mixer without hand shower - Brushed Light Gold

SERIES SPECIFIC

26 024 661 Product version from 10/1/2023



## Spare parts list

| No.  | Item Number        | Name   | Quantity used | Delivery time |
|--|--------------------|--|---------------|---------------|
| 36   | 09 24 03 149 10-27 | adaptor  | 1.00          | -             |
| Spare part can no longer be ordered, please order the replacement item |                    |  |               |               |
| 55   | 90 30 02 072 00-27 | Metal shower hose 1/2" x 3/8" x 1250 mm - Brushed Light Gold | 1.00          | 30            |
| 13   | 09 14 10 122 90    | seal   | 1.00          | 2             |
| 35   | 09 31 20 027 10-00 | plug   | 1.00          | 10            |
| 51   | 90 23 01 141 00 90 | back-flow preventer  | 1.00          | 2             |
| 29   | 90 16 02 023 00 90 | spring   | 1.00          | 2             |
| 46   | 09 11 10 080 20-27 | connection   | 1.00          | 60            |
| 42   | 09 17 11 024 20 90 | distributor  | 1.00          | 60            |
| 52   | 09 24 03 115 20-27 | nipple   | 1.00          | 60            |
| 30   | 09 31 09 102 20-27 | pull-rod   | 1.00          | -             |
| Spare part can no longer be ordered, please order the replacement item |                    |  |               |               |
| 37   | 09 30 30 111 90    | screw  | 1.00          | 2             |
| 10   | 09 11 10 083-27    | connection   | 1.00          | 60            |
| 7  | 09 27 89 000-27    | rosette  | 1.00          | 60            |
| 15   | 90 14 10 055 00 90 | seal   | 2.00          | 2             |
| 4  | 90 28 22 082 00-27 | spout  | 1.00          | 30            |
| 33   | 09 20 88 002-27    | handle   | 1.00          | 60            |
| 23   | 90 14 10 032 00 90 | seal   | 2.00          | 2             |



## Shower system with single-lever shower mixer without hand shower - Brushed Light Gold SERIES SPECIFIC

|  |                                |            |      |    |
|--|--------------------------------|------------|------|----|
| 26 024 661   | Product version from 10/1/2023 |            |      |    |
| 12   | 90 14 10 077 00 90             | seal       | 1.00 | 2  |
| 8  | 09 14 10 006 90                | seal       | 1.00 | 2  |
| 2  | 09 24 03 163 20-27             | adaptor    | 1.00 | 60 |
| 21   | 90 14 10 010 00 90             | seal       | 2.00 | 2  |
| 34   | 09 14 10 132 90                | seal       | 1.00 | 2  |
| 5  | 05 30 31 025 00 90             | fixing set | 2.00 | 2  |
| 16   | 09 27 88 010-27                | rosette    | 1.00 | 60 |
| 22   | 09 24 03 162 20 90             | nipple     | 1.00 | 2  |
| 9  | 90 31 11 030 00 90             | pin        | 1.00 | 2  |
| 50   | 09 24 77 002 90                | nut        | 1.00 | 2  |
| 39   | 04 28 22 038 00 90             | connection | 2.00 | 2  |
| 27   | 09 24 04 341 90                | nut        | 1.00 | 60 |
| 19   | 09 11 10 081 20-27             | connection | 1.00 | 60 |
| 17   | 09 14 10 101 90                | seal       | 1.00 | 2  |
| 44   | 90 14 10 063 00 90             | seal       | 3.00 | 2  |
| 41   | 04 28 22 034 00-27             | pipe       | 1.00 | 60 |
| 24   | 09 31 11 024 90                | pin        | 1.00 | 2  |
| 47   | 09 27 88 008-27                | rosette    | 1.00 | 60 |
| 31   | 09 14 10 112 90                | seal       | 1.00 | 2  |
| 53   | 90 21 02 069 00-27             | cover      | 1.00 | 30 |
| 28   | 90 15 05 064 00 90             | cartridge  | 1.00 | 2  |
| 49   | 09 21 02 128 90                | sleeve     | 1.00 | 2  |
| 38   | 09 14 10 139 90                | seal       | 6.00 | 2  |
| 18   | 09 31 11 061 90                | pin        | 2.00 | 2  |
| 1  | 04 12 05 091 00-27             | shower     | 1.00 | 60 |
| 48   | 09 24 04 210 10 90             | nipple     | 1.00 | 2  |
| 11   | 09 17 11 049-27                | holder     | 1.00 | 60 |
| 54   | 28 050 920-27                  | holder     | 1.00 | -  |
| Spare part can no longer be ordered, please order the replacement item |                                |            |      |    |
| 14   | 04 28 22 134 20-27             | pipe       | 1.00 | 60 |
| 25   | 90 20 66 017 00-27             | handle     | 1.00 | 30 |
| 40   | 04 31 20 034 00 90             | plug       | 1.00 | 2  |
| 26   | 09 28 30 042-27                | cover      | 1.00 | 60 |
| 32   | 09 21 34 081 20-27             | nipple     | 1.00 | 60 |
| 43   | 09 21 02 132-27                | lid        | 1.00 | 60 |
| 6  | 09 30 11 103 90                | holder     | 2.00 | 2  |
| 45   | 09 24 04 215 20 90             | nipple     | 1.00 | 2  |
| 20   | 09 31 11 049 90                | pin        | 3.00 | 2  |
| 3  | 09 23 01 039 90                | sieve      | 1.00 | 2  |