
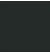



26 413 626



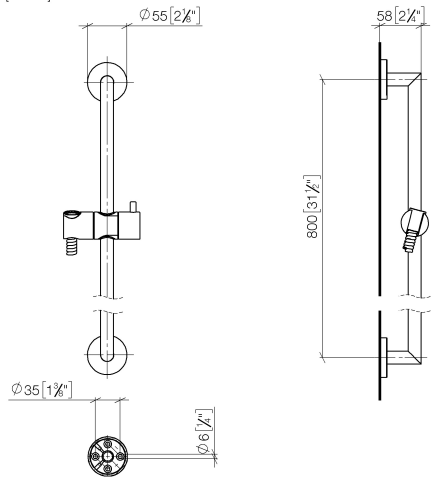
- slide bar
- Pipe diameter 18 mm
- gauge 800 mm
- metal shower hose 1750mm with integrated anti-twist protection
- shower hose connector 3/8"
- WRAS

This article does not include a hand shower!

	Chrome	26 413 626-00
	Matte Black	26 413 626-33
	Brushed Chrome	26 413 626-93

26 413 626

mm [inches]



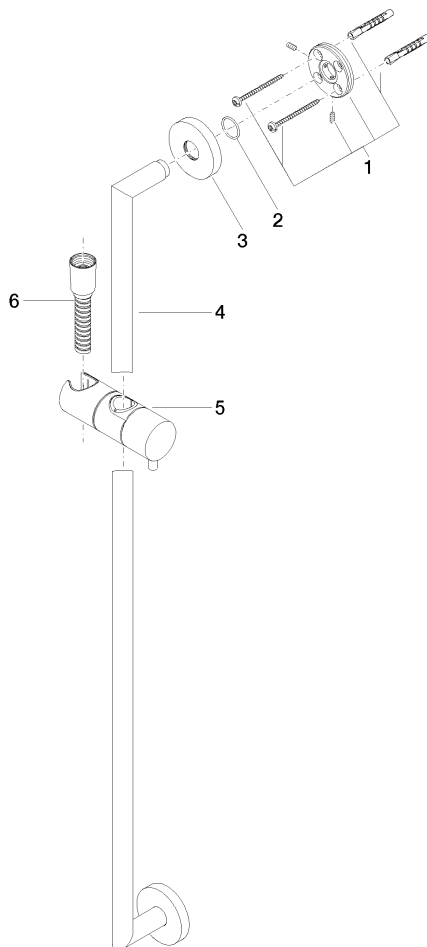
### Codes & Standards

Scottish Water Byelaws	UK Water Supply Regulations
---------------------------	--------------------------------

### Certificates and sustainability

WRAS\_2009

26 413 626



## Spare parts list

No.	Item Number	Name	Quantity used	Delivery time
1	05 17 62 500 00 90	fixing set	2.00	2
3	08 27 62 500-00	rosette	2.00	10
4	05 28 22 590 01-00	bar	1.00	10
5	12 580 970-00	Slide unit - Chrome	1.00	10
6	28 322 970-00	Metal shower hose 1/2" x 3/8" x 1750 mm - Chrome	1.00	2
2	90 14 10 032 00 90	seal	2.00	2