

TARA Showerpipe without hand shower FlowReduce 220 mm - Brushed Bronze

TARA

26 633 892 Product version from 4/1/2024



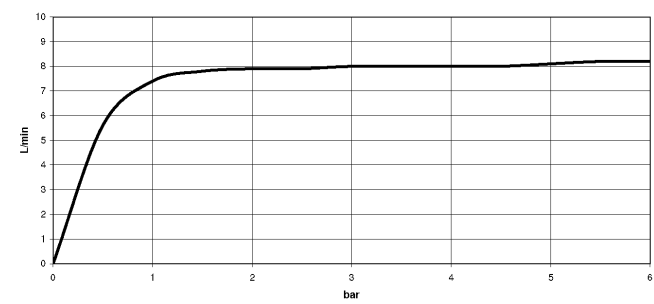
- shower with fixed riser projection 420mm
- overhead shower: rain flow
- rain shower Ø 220 mm
- rain shower with anti-scale system
- max. rainshower flow 7 l/min
- rotary diverter for fixed-riser shower/hand shower
- height of fittings up to rain shower (bottom edge) 1007mm
- height of fittings up to top edge of elbow 1167mm
- rosette for shower holder Ø 55mm
- rosette for wall mounting Ø 57mm
- rosette for shower mixer Ø 65mm
- gauge 150 mm - 13 mm
- 1500 mm metal shower hose
- 1/2" connection
- Pipe diameter 20 mm
- quick clearing
- This product can help a building meet the requirements of Green Building Rating Systems, e.g. LEED®, BREEAM®, DGNB
- WRAS

This article does not include a hand shower!

Intrinsic protection against back flow.

	Brushed Bronze	26 633 892-42
	Chrome	26 633 892-00
	Brushed Platinum	26 633 892-06
	Platinum	26 633 892-08
	Dark Chrome	26 633 892-19
	Brushed Durabrass (23kt Gold)	26 633 892-28
	Matte Black	26 633 892-33
	Brushed Champagne (22kt Gold)	26 633 892-46
	Champagne (22kt Gold)	26 633 892-47
	Brushed Chrome	26 633 892-93
	Brushed Dark Platinum	26 633 892-99

Flow rate chart



Codes & Standards

DIN 4109

ISO 3822

Ü-Zeichen



TARA Showerpipe without hand shower FlowReduce 220 mm - Brushed Bronze

TARA

26 633 892 Product version from 4/1/2024

Certificates and sustainability

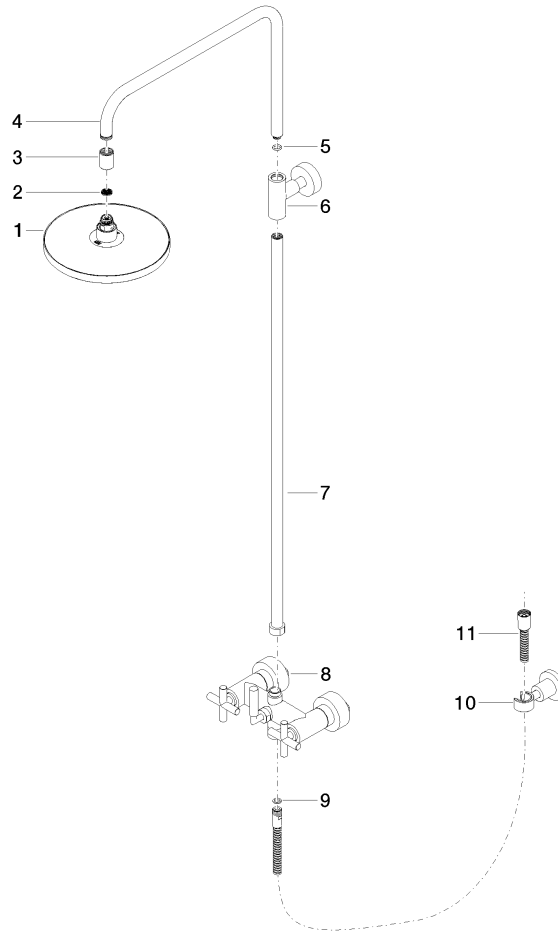
LGA_38

TARA Showerpipe without hand shower FlowReduce 220 mm - Brushed Bronze

TARA

26 633 892 Product version from 4/1/2024

Parts for other finishes can be found here: [Chrome](#)



Spare parts list

No.	Item Number	Name	Quantity used	Delivery time
	3 09 24 03 177 20-42	adaptor	1.00	60
	1 90 12 05 092 20-42	shower	1.00	30
	8 04 17 10 020 01-42	fitting	1.00	60
	11 28 304 970-42	Metal shower hose 1/2" x 3/8" x 1500 mm - Brushed Bronze	1.00	30
	9 90 14 20 026 00 90	seal	1.00	2
	2 09 23 01 039 90	sieve	1.00	2
	10 28 050 892-42	TARA Wall bracket - Brushed Bronze	1.00	30
	4 04 28 22 101 20-42	spout	1.00	60
	5 90 14 10 011 00 90	seal	1.00	2
	6 90 17 11 037 00-42	holder	1.00	30
	7 90 28 22 096 00-42	pipe	1.00	30