

VAIA Hand shower set for bath rim or tile edge installation - Brushed Champagne (22kt Gold)

VAIA

27 702 809 Product version from 3/13/2017 to 5/15/2020



- COMPACT RAIN, max. flow rate 6.8 l/min (at 3 bar)
- with anti-scale system
- rosette Ø 60 mm
- hole diameter 32 mm
- metal shower hose 1750mm with integrated anti-twist protection
- WRAS

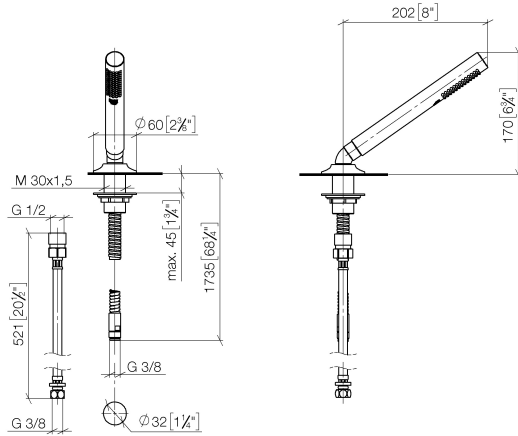
Intrinsic protection against back flow.

	Brushed Champagne (22kt Gold)	27 702 809-46
	Chrome	27 702 809-00
	Brushed Platinum	27 702 809-06
	Platinum	27 702 809-08
	Dark Chrome	27 702 809-19
	Brushed Durabronze (23kt Gold)	27 702 809-28
	Brushed Dark Brass	27 702 809-39
	Brushed Bronze	27 702 809-42
	Champagne (22kt Gold)	27 702 809-47
	Brushed Dark Platinum	27 702 809-99

VAIA Hand shower set for bath rim or tile edge installation - Brushed Champagne (22kt Gold)

VAIA

27 702 809 Product version from 3/13/2017 to 5/15/2020
mm [inches]



Flow rate chart



Codes & Standards

ASME A112.18.1

cUPC

EN 1717

Scottish Water
Byelaws

UK Water Supply
Regulations



VAIA Hand shower set for bath rim or tile edge installation - Brushed Champagne (22kt Gold)

VAIA

27 702 809 Product version from 3/13/2017 to 5/15/2020

Certificates and sustainability

Belgaqua_22_282_2 IAPMO_4976

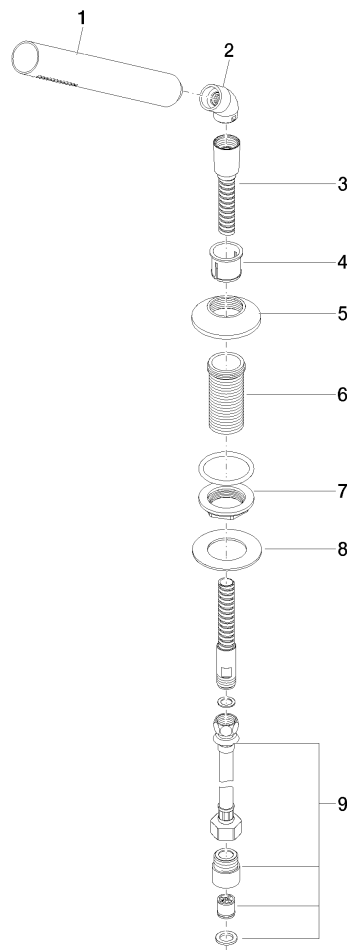
WRAS_2209

VAIA Hand shower set for bath rim or tile edge installation - Brushed Champagne (22kt Gold)

VAIA

27 702 809 Product version from 3/13/2017 to 5/15/2020

Parts for other
finishes can be found
here: [Chrome](#)



Spare parts list

No.	Item Number	Name	Quantity used	Delivery time
3	28 322 970-46	Metal shower hose 1/2" x 3/8" x 1750 mm - Brushed Champagne (22kt Gold)	1.00	30
9	12 505 970 90	High pressure hose 1/2" x 3/8" x 500 mm -	1.00	2
6	09 30 01 090-07	sleeve	1.00	30
5	09 27 80 016-46	rosette	1.00	30
7	04 23 10 032 46 90	fixing set	1.00	2
8	09 30 11 060 90	disc	1.00	2
4	90 18 40 085 00 90	sleeve	1.00	2
2	90 24 04 019 00-46	angle	1.00	30
1	90 12 11 140 41-46	shower	1.00	30