

MADISON Metal hand shower with porcelain insert (white) - Durabrand (23kt Gold)

MADISON

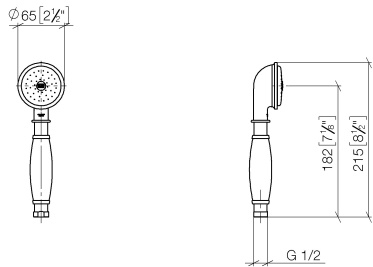
28 002 970 Product version from 7/1/2025



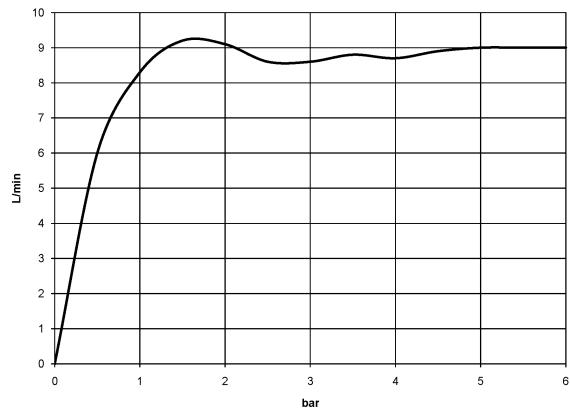
- spray head Ø 64mm
- COMPACT RAIN, max. flow rate 9 l/min (at 3 bar)
- Function from: 6 l/min
- 1/2" connection
- WRAS

Intrinsic protection against back flow.

	Durabrand (23kt Gold)	28 002 970-09
	Chrome	28 002 970-00
	Chrome	28 002 970-00 0010
	Gold (23.9kt)	28 002 970-01
	Brushed Platinum	28 002 970-06
	Brushed Platinum	28 002 970-06 0010
	Platinum	28 002 970-08
	Platinum	28 002 970-08 0010
	Durabrand (23kt Gold)	28 002 970-09 0010
	Brushed Durabrand (23kt Gold)	28 002 970-28
	Brushed Durabrand (23kt Gold)	28 002 970-28 0010
	Brushed Dark Brass	28 002 970-39
	Brushed Dark Brass	28 002 970-39 0010
	Brushed Chrome	28 002 970-93
	Brushed Chrome	28 002 970-93 0010
	Brushed Dark Platinum	28 002 970-99
	Brushed Dark Platinum	28 002 970-99 0010



Flow rate chart



Codes & Standards

DIN 4109	ISO 3822	Scottish Water Byelaws	UK Water Supply Regulations
----------	----------	---------------------------	--------------------------------

Ü-Zeichen



MADISON Metal hand shower with porcelain insert (white) - Durabrass (23kt Gold)

MADISON

28 002 970 Product version from 7/1/2025

Certificates and sustainability

LGA_8

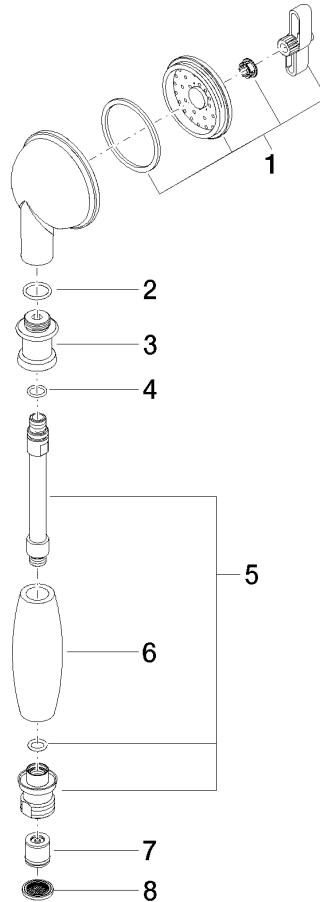
WRAS_240502

MADISON Metal hand shower with porcelain insert (white) - Durabronze (23kt Gold)

MADISON

28 002 970 Product version from 7/1/2025

Parts for other
finishes can be found
here: [Chrome](#)



Spare parts list

No.	Item Number	Name	Quantity used	Delivery time
	4 09 14 10 042 90	seal	1.00	2
	7 09 23 01 077 90	flow reducer	1.00	2
	6 11 167 820 60	handle	1.00	2
	3 09 24 04 059 20-09	nipple	1.00	40
	2 09 14 10 069 90	seal	1.00	2
	5 90 28 22 033 00-09	insert	1.00	-
Spare part can no longer be ordered, please order the replacement item				
	1 90 12 01 010 00 90	set	1.00	2
	8 09 23 01 039 90	sieve	1.00	2