







**MADISON Body spray without volume control FlowReduce - Durabrand (23kt Gold)**

MADISON

28 518 360



- spray head Ø 55mm
- ball-joint pivotable through 25° (in any direction)
- rain flow
- rosette Ø 55 mm
- 1/2" connection
- max. flow 5 l/min
- This product can help a building meet the requirements of Green Building Rating Systems, e.g. LEED®, BREEAM®, DGNB

|   |                               |               |
|---|-------------------------------|---------------|
|  | Durabrand (23kt Gold)         | 28 518 360-09 |
|  | Chrome                        | 28 518 360-00 |
|  | Brushed Platinum              | 28 518 360-06 |
|  | Platinum                      | 28 518 360-08 |
|  | Brushed Durabrand (23kt Gold) | 28 518 360-28 |
|  | Brushed Dark Platinum         | 28 518 360-99 |

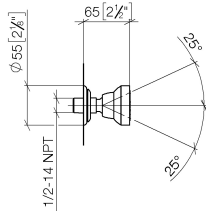
**Recommended miscellaneous**

**Concealed wall elbow -** 35 085 970 90

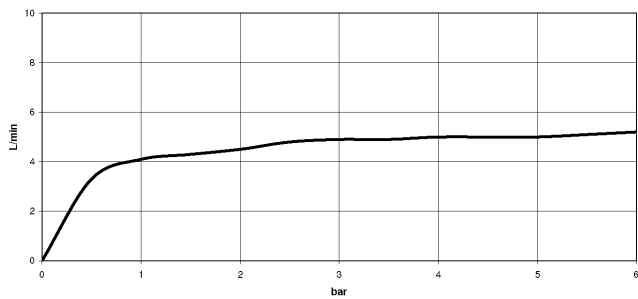


- max. recess depth 163 mm
- min. recess depth 90 mm

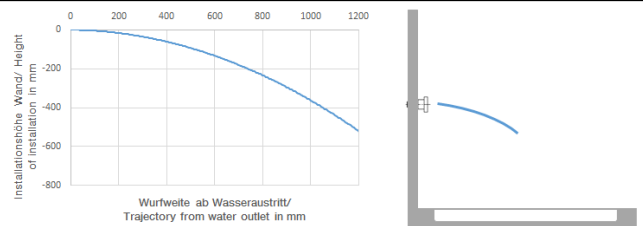
28 518 360  
mm [inches]



Flow rate chart



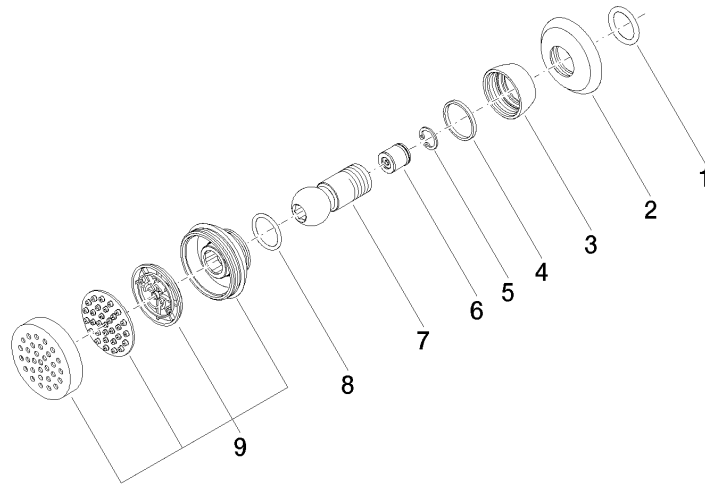
Trajectory diagram



Certificates

LGA\_38651.

28 518 360



### Spare parts list

| No. | Item Number        | Name                  | Quantity used | Delivery time |
|-----|--------------------|-----------------------|---------------|---------------|
| 1   | 90 14 10 026 00 90 | seal                  | 1             | 2             |
| 2   | 09 27 35 003-09    | rosette               | 1             | 40            |
| 3   | 09 23 30 027-09    | nut                   | 1             | 60            |
| 4   | 09 14 15 010 90    | ring                  | 1             | 2             |
| 5   | 09 16 01 014 90    | ring                  | 1             | 2             |
| 6   | 09 23 01 048 90    | back-flow preventer   | 1             | 2             |
| 7   | 09 21 40 016-09    | connection            | 1             | 40            |
| 8   | 09 14 10 015 90    | seal                  | 1             | 2             |
| 9   | 90 12 05 028 00-09 | casing ( completely ) | 1             | 40            |