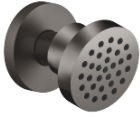











## Body spray without volume control FlowReduce - Brushed Dark Platinum

SERIES SPECIFIC

28 518 979 Product version from 4/1/2024



- spray head Ø 55mm
- ball-joint pivotable through 25° (in any direction)
- HORIZONTAL RAIN, max. flow rate 5 l/min (at 3 bar)
- with anti-scale system
- rosette Ø 55 mm
- 1/2" connection
- This product can help a building meet the requirements of Green Building Rating Systems, e.g. LEED®, BREEAM®, DGNB
- WRAS

	Brushed Dark Platinum	28 518 979-99
	Chrome	28 518 979-00
	Brushed Platinum	28 518 979-06
	Platinum	28 518 979-08
	Durabrass (23kt Gold)	28 518 979-09
	Dark Chrome	28 518 979-19
	Light Gold	28 518 979-26
	Brushed Light Gold	28 518 979-27
	Brushed Durabrass (23kt Gold)	28 518 979-28
	Matte Black	28 518 979-33
	Brushed Dark Brass	28 518 979-39
	Brushed Bronze	28 518 979-42
	Brushed Champagne (22kt Gold)	28 518 979-46
	Champagne (22kt Gold)	28 518 979-47
	Brushed Chrome	28 518 979-93

### Recommended miscellaneous

#### Concealed wall elbow -

35 085 970 90



- max. recess depth 163 mm
- min. recess depth 90 mm



Flow rate chart



Trajectory diagram



## Codes & Standards

ASME A112.18.1	cUPC	DIN 4109	ISO 3822
Scottish Water Byelaws	UK Water Supply Regulations	Ü-Zeichen	



Body spray without volume control FlowReduce - Brushed Dark Platinum

SERIES SPECIFIC

---

28 518 979    Product version from 4/1/2024

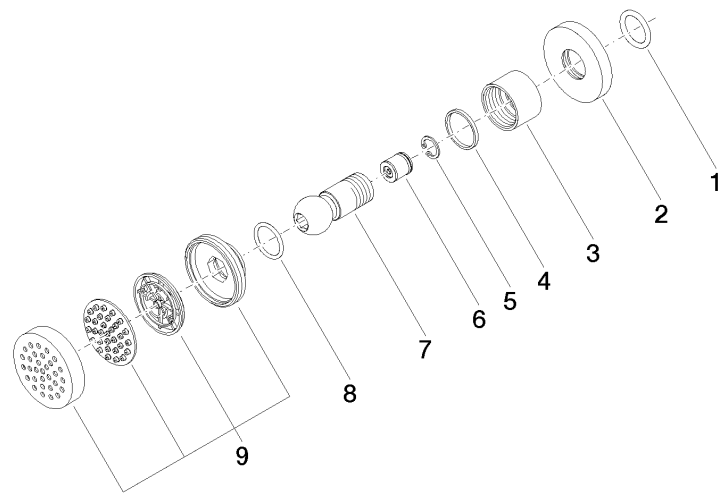
Certificates and sustainability

---

LGA\_38

IAPMO\_4976

WRAS\_240602



### Spare parts list

No.	Item Number	Name	Quantity used	Delivery time
	3 09 23 30 026-99	nut	1.00	20
	7 09 21 40 016-99	connection	1.00	20
	9 90 12 05 027 00-99	casing ( completely )	1.00	20
	6 09 23 01 048 90	back-flow preventer	1.00	2
	5 09 16 01 014 90	ring	1.00	2
	4 09 14 15 010 90	ring	1.00	2
	8 09 14 10 015 90	seal	1.00	2
	1 90 14 10 026 00 90	seal	1.00	2
	2 09 27 22 019-99	rosette	1.00	20