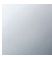


28 528 710



- spray head Ø 55mm
- ball-joint pivotable through 25° (in any direction)
- HORIZONTAL RAIN, max. flow rate 7 l/min (at 3 bar)
- anti-scale system
- rosette 78 x 55 mm
- 1/2" connection

 Chrome

28 528 710-00

 Brushed Platinum

28 528 710-06

To be provided by the customer. Zigbee Gateway!

Recommended miscellaneous



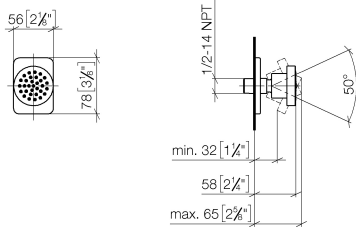
Concealed wall elbow -

35 085 970 90

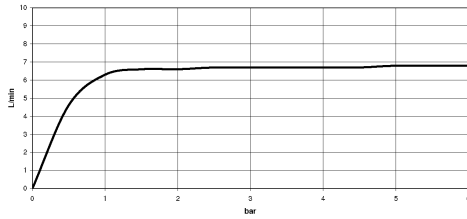
- max. recess depth 163 mm
- min. recess depth 90 mm

28 528 710

mm [inches]



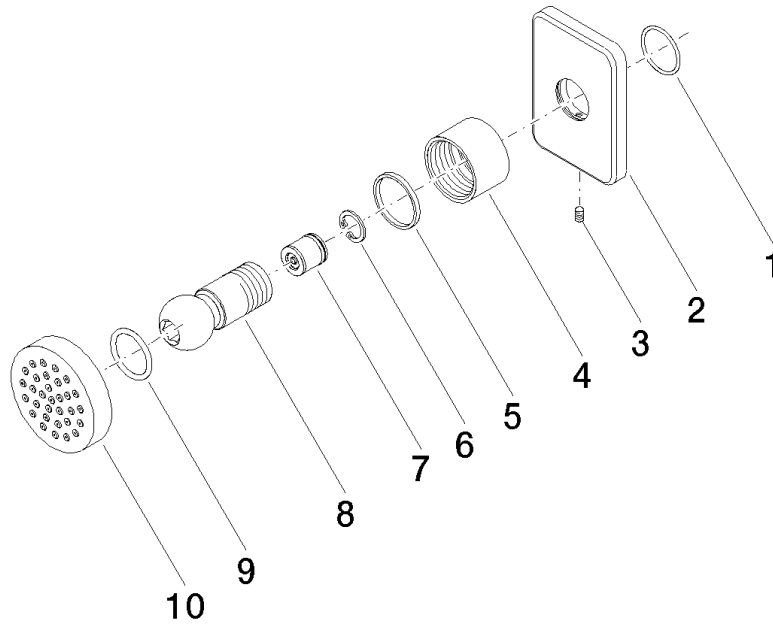
Flow rate chart



Certificates

LGA_38652.

28 528 710



Spare parts list

| No. | Item Number | Name | Quantity used | Delivery time |
|-----|--------------------|---------------------|---------------|---------------|
| 1 | 09 14 10 098 90 | seal | 1 | 2 |
| 2 | 09 27 71 004-00 | rosette | 1 | 10 |
| 3 | 09 31 11 048 90 | pin | 1 | 2 |
| 4 | 09 23 30 026-00 | nut | 1 | 10 |
| 5 | 09 14 15 010 90 | ring | 1 | 2 |
| 6 | 09 16 01 014 90 | ring | 1 | 2 |
| 7 | 90 23 01 147 00 90 | back-flow preventer | 1 | 2 |
| 8 | 09 21 40 016-00 | connection | 1 | 10 |
| 9 | 09 14 10 015 90 | seal | 2 | 2 |