

Rain shower with wall fixing 220 mm - Matte Black

SERIES SPECIFIC

28 647 670 Product version from 4/1/2025



- rain shower Ø 220 mm
- Rain shower material: metal
- PURE RAIN, max. flow rate 14 l/min (at 3 bar)
- Function from: 7 l/min
- quick clearing
- with anti-scale system

Technical data:

- 450mm projection
- rosette 65 x 65 mm
- 1/2" connection

Notes:

- This product can help a building meet the requirements of Green Building Rating Systems, e.g. LEED®, BREEAM®, DGNB

	Matte Black	28 647 670-33
	Chrome	28 647 670-00
	Brushed Platinum	28 647 670-06
	Platinum	28 647 670-08
	Dark Chrome	28 647 670-19
	Brushed Light Gold	28 647 670-27
	Brushed Durabronze (23kt Gold)	28 647 670-28
	Brushed Bronze	28 647 670-42
	Brushed Champagne (22kt Gold)	28 647 670-46
	Champagne (22kt Gold)	28 647 670-47
	Brushed Chrome	28 647 670-93
	Brushed Dark Platinum	28 647 670-99

Required miscellaneous

Concealed wall elbow - 35 085 970 90

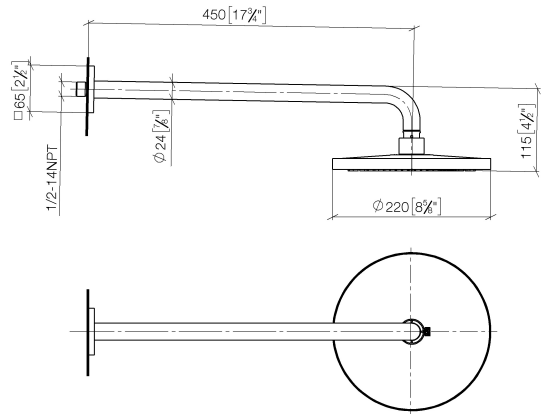


Rain shower with wall fixing 220 mm - Matte Black

SERIES SPECIFIC

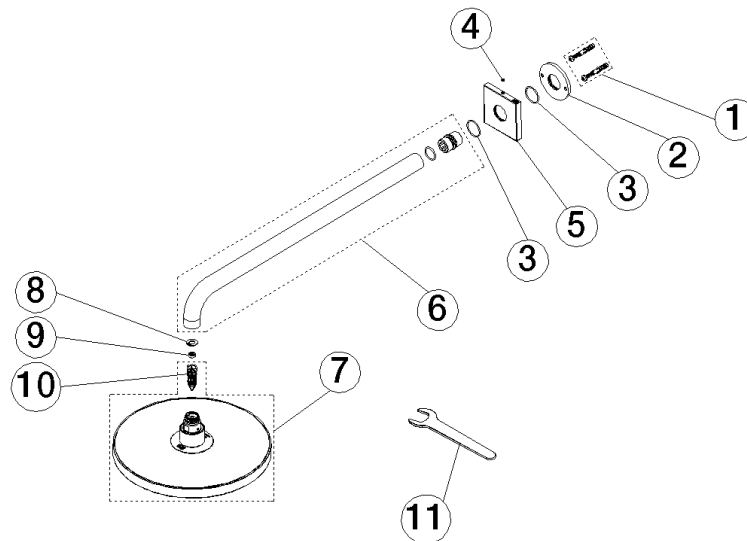
28 647 670 Product version from 4/1/2025

mm [inches]



Flow rate chart





Spare parts list

No.	Item Number	Name	Quantity used	Delivery time
6	90 11 03 070 00-33	pipe	1.00	30
5	09 27 67 015-33	rosette	1.00	60
3	09 14 10 150 90	seal	2.00	2
1	04 30 31 032 00 90	fixing set	1.00	2
4	90 31 11 038 00 90	pin	1.00	2
7	90 12 05 094 00-33	shower	1.00	-
Spare part can no longer be ordered, please order the replacement item				
9	09 23 01 136 90	flow reducer	1.00	2
10	90 18 40 278 00 90	insert	1.00	2
11	90 30 09 069 00 90	key	1.00	2
2	09 17 20 120 90	holder	1.00	2
8	09 16 01 014 90	ring	1.00	2