

Rain shower with wall fixing FlowReduce 220 mm - Matte Black

SERIES SPECIFIC

28 647 970 Product version from 4/1/2025



- rain shower Ø 220 mm
- Rain shower material: metal
- PURE RAIN, max. flow rate 14 l/min (at 3 bar)
- Function from: 7 l/min
- quick clearing
- with anti-scale system

Technical dimensions:

- 450mm projection
- rosette Ø 60 mm
- 1/2" connection

Notes:

- This product can help a building meet the requirements of Green Building Rating Systems, e.g. LEED®, BREEAM®, DGNB

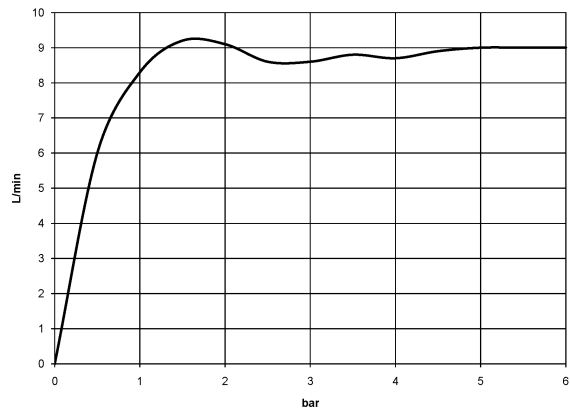
| | | |
|---|--------------------------------|---------------|
|  | Matte Black | 28 647 970-33 |
|  | Chrome | 28 647 970-00 |
|  | Brushed Platinum | 28 647 970-06 |
|  | Platinum | 28 647 970-08 |
|  | Dark Chrome | 28 647 970-19 |
|  | Light Gold | 28 647 970-26 |
|  | Brushed Light Gold | 28 647 970-27 |
|  | Brushed Durabronze (23kt Gold) | 28 647 970-28 |
|  | Brushed Dark Brass | 28 647 970-39 |
|  | Brushed Bronze | 28 647 970-42 |
|  | Brushed Champagne (22kt Gold) | 28 647 970-46 |
|  | Champagne (22kt Gold) | 28 647 970-47 |
|  | Cyprus | 28 647 970-49 |
|  | Brushed Chrome | 28 647 970-93 |
|  | Brushed Dark Platinum | 28 647 970-99 |

28 647 970 Product version from 4/1/2025

mm [inches]

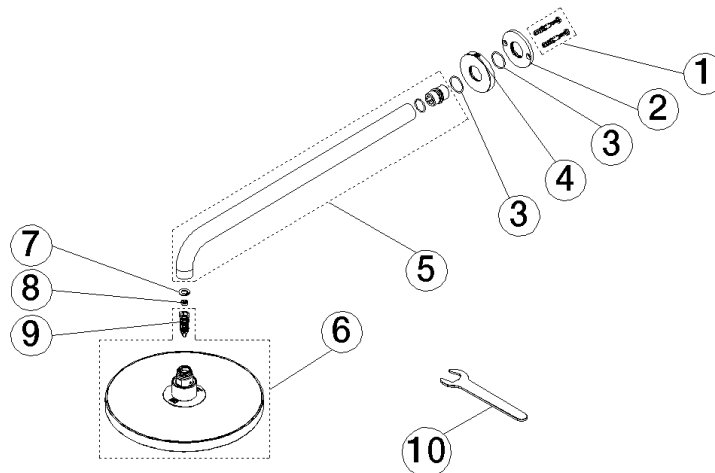


Flow rate chart



28 647 970 Product version from 4/1/2025

Parts for other
finishes can be found
here: [Chrome](#)



Spare parts list

| No. | Item Number | Name | Quantity used | Delivery time |
|--|--------------------|--------------|---------------|---------------|
| 9 | 90 18 40 278 00 90 | insert | 1.00 | 2 |
| 1 | 04 30 31 032 00 90 | fixing set | 1.00 | 2 |
| 10 | 90 30 09 069 00 90 | key | 1.00 | 2 |
| 7 | 09 16 01 014 90 | ring | 1.00 | 2 |
| 2 | 09 17 20 120 90 | holder | 1.00 | 2 |
| 8 | 09 23 01 136 90 | flow reducer | 1.00 | 2 |
| 6 | 90 12 05 094 00-33 | shower | 1.00 | - |
| Spare part can no longer be ordered, please order the replacement item | | | | |
| 4 | 09 27 97 015-33 | rosette | 1.00 | 30 |
| 5 | 90 11 03 070 00-33 | pipe | 1.00 | 30 |
| 3 | 09 14 10 150 90 | seal | 2.00 | 2 |