

SERIES SPECIFIC Rain shower with wall fixing 300 mm - Chrome

SERIES SPECIFIC

28 675 670 Product version from 4/1/2025





- rain shower Ø 300 mm
- Material rain shower: plastic
- PURE RAIN, max. flow rate 14 l/min (at 3 bar)
- Function from: 10 l/min
- quick clearing
- with anti-scale system

Technical data:

- 450mm projection
- rosette 65 x 65 mm
- 1/2" connection

Notes:

- This product can help a building meet the requirements of Green Building Rating Systems, e.g. LEED®, BREEAM®, DGNB

| | | |
|---|-----------------------|---------------|
|  | Chrome | 28 675 670-00 |
|  | Dark Chrome | 28 675 670-19 |
|  | Light Gold | 28 675 670-26 |
|  | Brushed Light Gold | 28 675 670-27 |
|  | Matte Black | 28 675 670-33 |
|  | Brushed Bronze | 28 675 670-42 |
|  | Brushed Chrome | 28 675 670-93 |
|  | Brushed Dark Platinum | 28 675 670-99 |

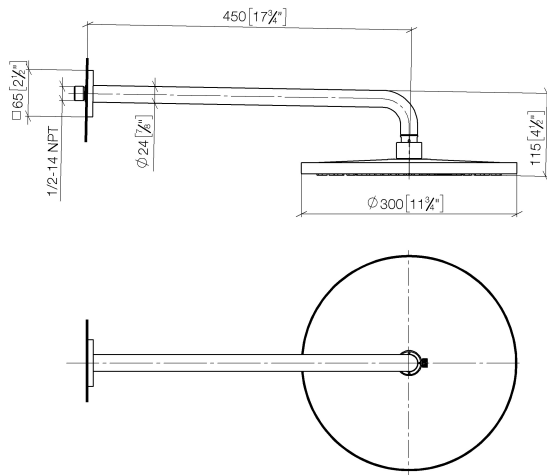
Required miscellaneous

Concealed wall elbow - 35 085 970 90

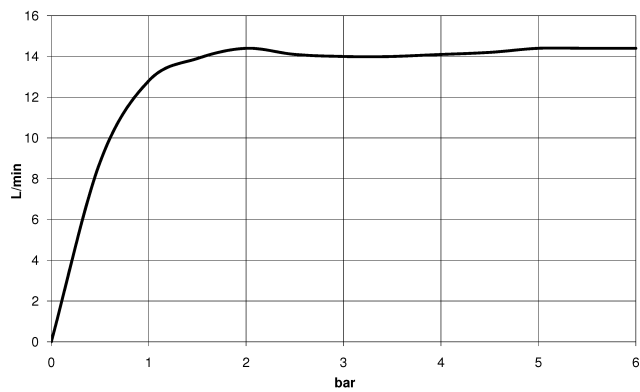


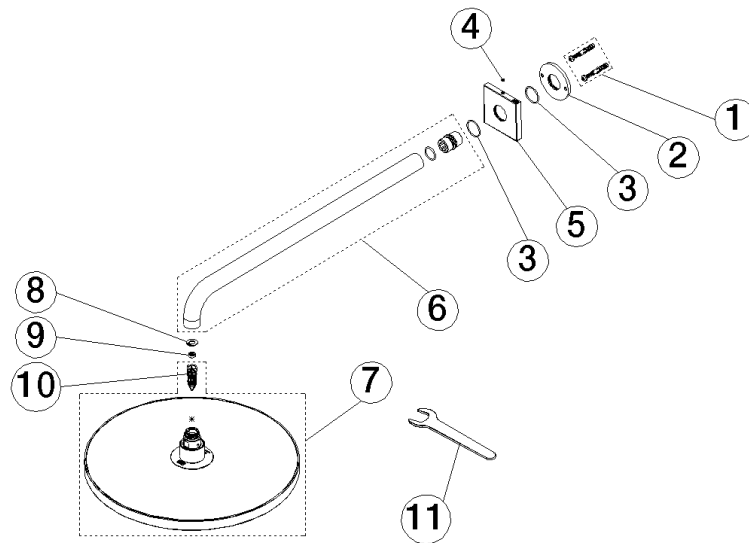
28 675 670 Product version from 4/1/2025

mm [inches]



Flow rate chart





Spare parts list

| No. | Item Number | Name | Quantity used | Delivery time |
|-----|--------------------|--------------|---------------|---------------|
| 9 | 09 23 01 101 90 | flow reducer | 1.00 | 2 |
| 1 | 04 30 31 032 00 90 | fixing set | 1.00 | 2 |
| 7 | 90 12 05 101 00-00 | shower | 1.00 | 10 |
| 4 | 90 31 11 038 00 90 | pin | 1.00 | 2 |
| 10 | 90 18 40 278 00 90 | insert | 1.00 | 2 |
| 2 | 09 17 20 120 90 | holder | 1.00 | 2 |
| 6 | 90 11 03 070 00-00 | pipe | 1.00 | 10 |
| 8 | 09 16 01 014 90 | ring | 1.00 | 2 |
| 5 | 09 27 67 015-00 | rosette | 1.00 | 10 |
| 3 | 09 14 10 150 90 | seal | 2.00 | 2 |
| 11 | 90 30 09 069 00 90 | key | 1.00 | 2 |