

SERIES SPECIFIC Rain shower with wall fixing 300 mm - Light Gold

SERIES SPECIFIC

28 675 670

Product version from 4/1/2025





- rain shower Ø 300 mm
- Material rain shower: plastic
- PURE RAIN, max. flow rate 14 l/min (at 3 bar)
- Function from: 10 l/min
- quick clearing
- with anti-scale system

Technical data:

- 450mm projection
- rosette 65 x 65 mm
- 1/2" connection

Notes:

- This product can help a building meet the requirements of Green Building Rating Systems, e.g. LEED®, BREEAM®, DGNB

	Light Gold	28 675 670-26
	Chrome	28 675 670-00
	Dark Chrome	28 675 670-19
	Brushed Light Gold	28 675 670-27
	Matte Black	28 675 670-33
	Brushed Bronze	28 675 670-42
	Brushed Chrome	28 675 670-93
	Brushed Dark Platinum	28 675 670-99

Required miscellaneous

Concealed wall elbow -

35 085 970 90

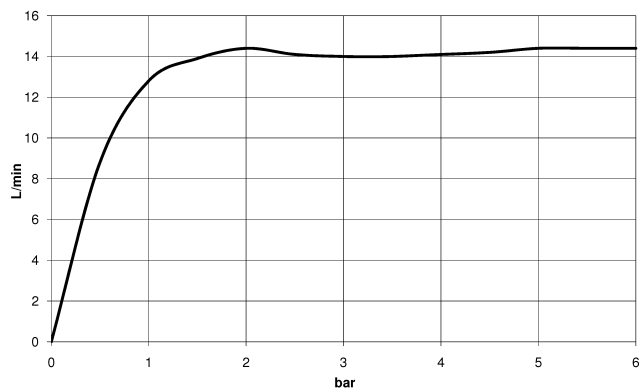


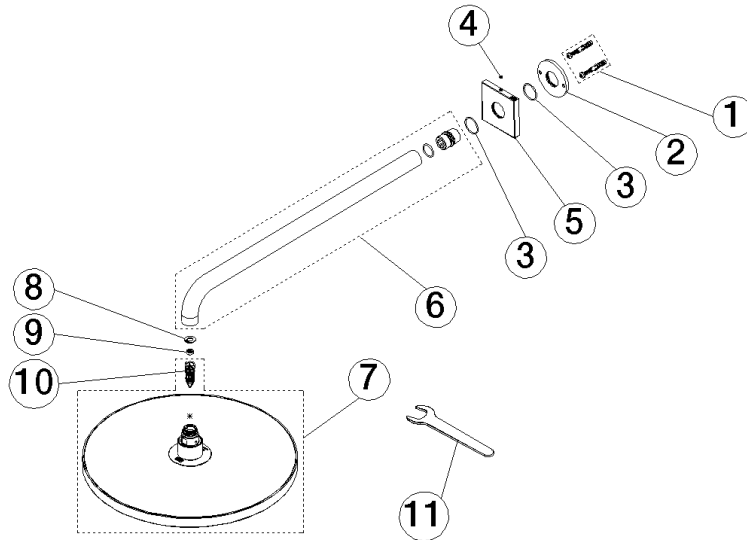
28 675 670 Product version from 4/1/2025

mm [inches]



Flow rate chart





Spare parts list

No.	Item Number	Name	Quantity used	Delivery time
5	09 27 67 015-26	rosette	1.00	60
6	90 11 03 070 00-26	pipe	1.00	30
3	09 14 10 150 90	seal	2.00	2
10	90 18 40 278 00 90	insert	1.00	2
4	90 31 11 038 00 90	pin	1.00	2
2	09 17 20 120 90	holder	1.00	2
7	90 12 05 101 00-26	shower	1.00	-
Spare part can no longer be ordered, please order the replacement item				
9	09 23 01 101 90	flow reducer	1.00	2
1	04 30 31 032 00 90	fixing set	1.00	2
8	09 16 01 014 90	ring	1.00	2
11	90 30 09 069 00 90	key	1.00	2