

## Rain shower with ceiling fixing FlowReduce 400 mm - Brushed Bronze

SERIES SPECIFIC

28 698 970 Product version from 4/1/2024



- rain shower Ø 400 mm
- rain flow
- max. flow 12 l/min
- Function from: 12 l/min
- quick clearing
- with anti-scale system

### Technical dimensions:

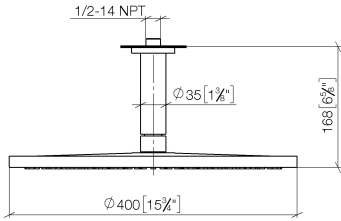
- rosette Ø 60 mm optional
- 1/2" connection

### Notes:

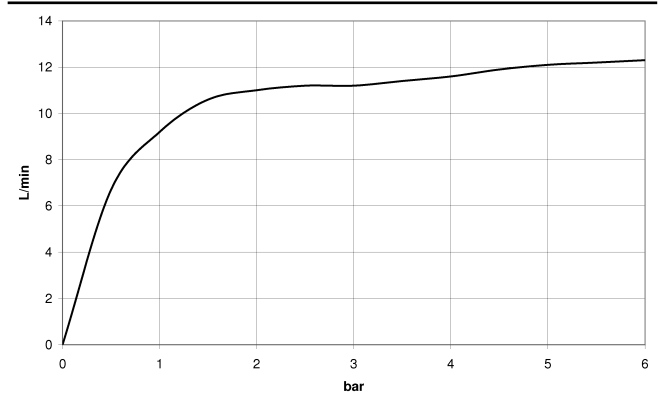
- This product can help a building meet the requirements of Green Building Rating Systems, e.g. LEED®, BREEAM®, DGNB

|   |                               |               |
|---|-------------------------------|---------------|
|    | Brushed Bronze                | 28 698 970-42 |
|    | Chrome                        | 28 698 970-00 |
|    | Brushed Platinum              | 28 698 970-06 |
|    | Platinum                      | 28 698 970-08 |
|    | Dark Chrome                   | 28 698 970-19 |
|    | Light Gold                    | 28 698 970-26 |
|    | Brushed Light Gold            | 28 698 970-27 |
|    | Brushed Durabrass (23kt Gold) | 28 698 970-28 |
|    | Matte Black                   | 28 698 970-33 |
|   | Brushed Champagne (22kt Gold) | 28 698 970-46 |
|  | Champagne (22kt Gold)         | 28 698 970-47 |
|  | Brushed Chrome                | 28 698 970-93 |
|  | Brushed Dark Platinum         | 28 698 970-99 |

mm [inches]



Flow rate chart



Codes & Standards

|          |          |           |
|----------|----------|-----------|
| DIN 4109 | ISO 3822 | Ü-Zeichen |
|----------|----------|-----------|



## Rain shower with ceiling fixing FlowReduce 400 mm - Brushed Bronze

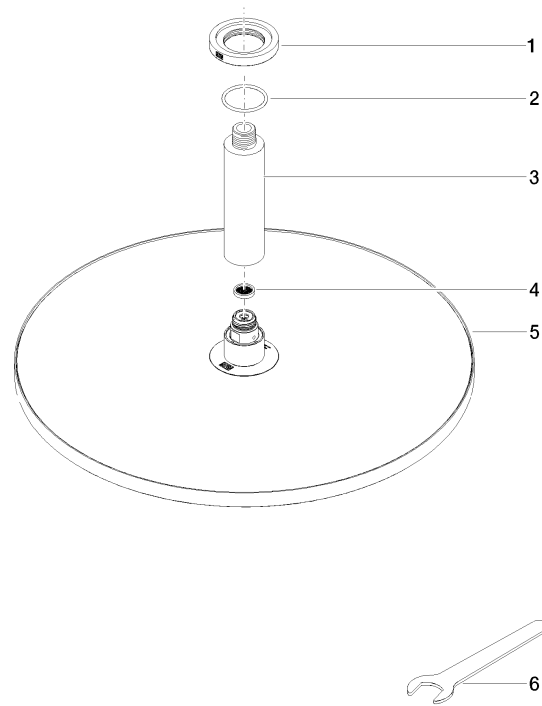
SERIES SPECIFIC

28 698 970 Product version from 4/1/2024

Certificates and sustainability

LGA\_38

Parts for other  
finishes can be found  
here: [Chrome](#)



Spare parts list

| No. | Item Number        | Name       | Quantity used | Delivery time |
|-----|--------------------|------------|---------------|---------------|
| 6   | 90 30 09 069 00 90 | key        | 1.00          | 2             |
| 5   | 90 12 05 090 20-42 | shower     | 1.00          | 30            |
| 3   | 09 11 03 080-42    | connection | 1.00          | 30            |
| 1   | 09 27 22 040-42    | rosette    | 1.00          | 30            |
| 4   | 09 23 01 075 90    | insert     | 1.00          | 2             |
| 2   | 09 14 10 141 90    | seal       | 1.00          | 2             |