

LULU Rain shower with ceiling fixing 300 x 240 mm - Chrome

LULU

28 796 710



Product version from 3/13/2017



- rain shower 300 x 240mm
- PURE RAIN, max. flow rate 20 l/min (at 3 bar)
- Function from: 12 l/min
- distance between ceiling and lower edge of the shower 165mm
- rosette 78 x 55, as required
- 1/2" connection
- with anti-scale system
- quick clearing
- WRAS

Product change as of 1st April 2024: max. flow

20l/min

	Chrome	28 796 710-00
	Brushed Platinum	28 796 710-06

Recommended miscellaneous



- Concealed wall elbow -

•max. recess depth 163 mm

•min. recess depth 90 mm

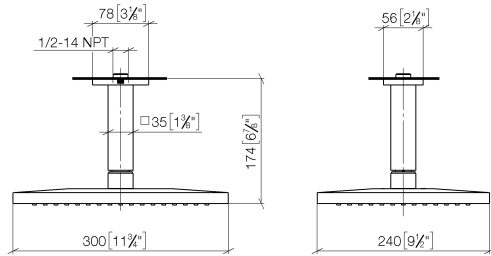
35 085 970 90

## LULU Rain shower with ceiling fixing 300 x 240 mm - Chrome

LULU

28 796 710 Product version from 3/13/2017

mm [inches]



### Flow rate chart



### Codes & Standards

DIN 4109

ISO 3822

Scottish Water  
Byelaws

UK Water Supply  
Regulations

Ü-Zeichen



## LULU Rain shower with ceiling fixing 300 x 240 mm - Chrome

LULU

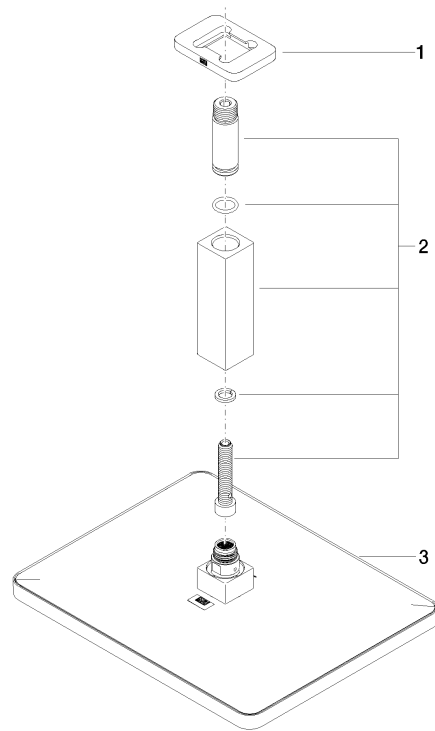
28 796 710 Product version from 3/13/2017

### Certificates and sustainability

LGA\_29

WRAS\_2212

LGA\_38



**Spare parts list**

No.	Item Number	Name	Quantity used	Delivery time
2	90 11 10 092 00-00	connection	1.00	10
1	09 27 71 020-00	rosette	1.00	10
3	04 12 05 062 00-00	shower	1.00	10