









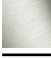
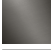


META Two-way diverter for bath rim or tile edge installation - Brushed Light Gold

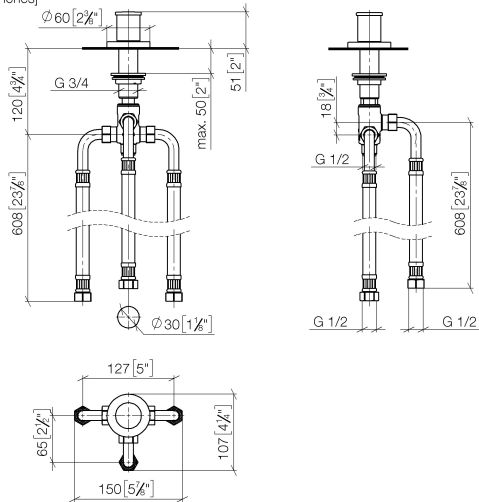
META

29 140 660	Product version from 7/1/2023		
	<ul style="list-style-type: none"> automatic bath/shower diverter hole diameter 32 mm rosette Ø 60 mm 1/2" connection max. flow 64.9 l/min at 3 bar flow pressure WRAS 		Brushed Light Gold
			29 140 660-27
			Chrome
			29 140 660-00
			Brushed Platinum
			29 140 660-06
			Dark Chrome
			29 140 660-19
			Light Gold
			29 140 660-26
			Matte Black
			29 140 660-33
			Brushed Dark Brass
			29 140 660-39
			Brushed Bronze
			29 140 660-42
			Brushed Champagne (22kt Gold)
			29 140 660-46
			Champagne (22kt Gold)
			29 140 660-47
			Brushed Chrome
			29 140 660-93
			Brushed Dark Platinum
			29 140 660-99

META Two-way diverter for bath rim or tile edge installation - Brushed Light Gold

META

29 140 660 Product version from 7/1/2023
mm [inches]



Flow rate chart



Codes & Standards

DIN 4109

ISO 3822

Ü-Zeichen



META Two-way diverter for bath rim or tile edge installation - Brushed Light Gold

META

29 140 660 Product version from 7/1/2023

Certificates and sustainability

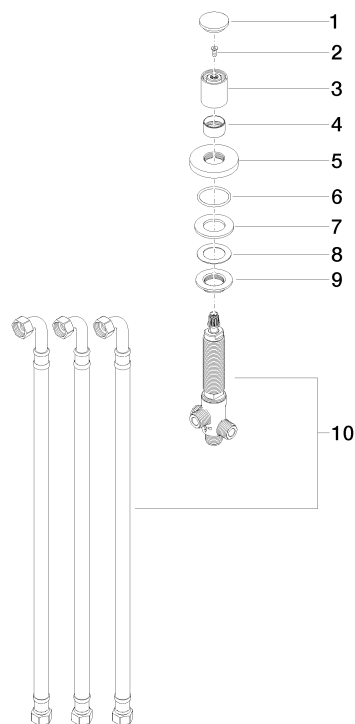
LGA_29

META Two-way diverter for bath rim or tile edge installation - Brushed Light Gold

META

29 140 660 Product version from 7/1/2023

Parts for other
finishes can be found
here: [Chrome](#)



Spare parts list

No.	Item Number	Name	Quantity used	Delivery time
	2 90 30 30 014 00 90	screw	1.00	2
	6 09 14 10 030 90	seal	1.00	2
	4 09 16 01 012-27	ring	1.00	60
	7 09 14 05 014 90	seal	1.00	2
	9 09 23 10 004 90	nut	1.00	2
	8 09 14 40 002 90	seal	1.00	2
	3 09 20 71 002-27	handle	1.00	60
	5 09 27 66 004-27	rosette	1.00	60
	10 90 17 09 051 00 90	diverter	1.00	2
	1 09 20 71 003-27	handle	1.00	60