

CYO Two-hole basin mixer without pop-up waste - Durabrand / Brushed Durabrand (23kt Gold)



CYO

29 217 811



- 133mm projection
- fixed spout
- rectangular, air-enriched flow
- height of mixer 180 mm
- height up to aerator 128 mm
- hole diameter spout 35 mm
- hole diameter valve 32 mm
- handle Ø 60mm
- 2x screw-in M 8 x 1 pressure hose, leak-tested
- 1x screw-in M 10 x 1 pressure hose, leak-tested
- max. flow 4.5 l/min
- progressive cartridge
- lead-free
- This product can help a building meet the requirements of Green Building Rating Systems, e.g. LEED®, BREEAM®, DGNB
- WRAS

NOTE: The handle inserts must be ordered separately from the fittings!

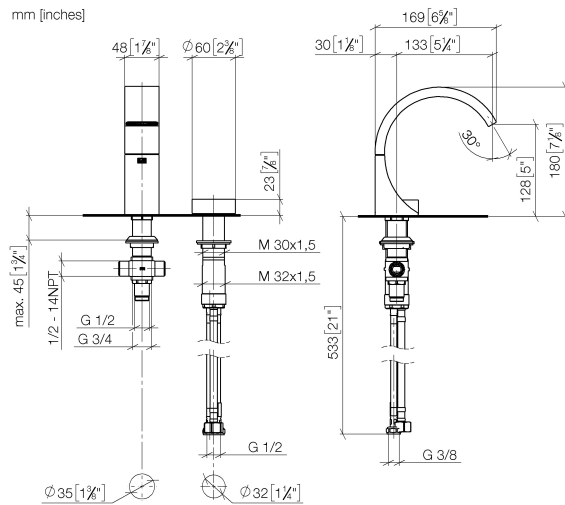
	Durabrand / Brushed Durabrand (23kt Gold)	29 217 811-38
	Chrome	29 217 811-00
	Brushed Platinum	29 217 811-06
	Dark Chrome	29 217 811-19
	Brushed Durabrand (23kt Gold)	29 217 811-28
	Platinum / Brushed Platinum	29 217 811-36
	Brushed Dark Platinum	29 217 811-99

CYO Two-hole basin mixer without pop-up waste - Durabron / Brushed Durabron (23kt Gold)

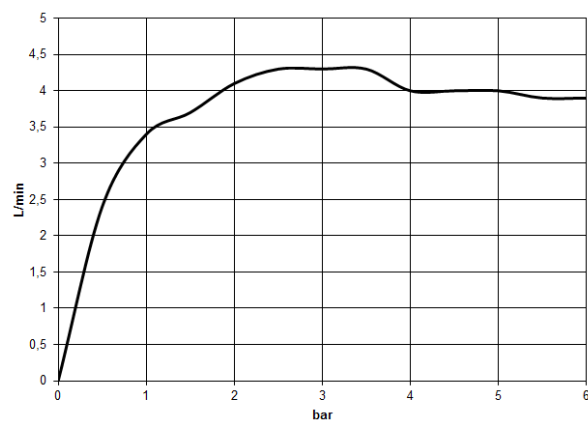
CYO

29 217 811

mm [inches]



Flow rate chart



Codes & Standards

DIN 4109

ISO 3822

Scottish Water
Byelaws

UK Water Supply
Regulations

Ü-Zeichen



CYO Two-hole basin mixer without pop-up waste - Durabrass / Brushed Durabrass (23kt Gold)

CYO

29 217 811

Certificates and sustainability

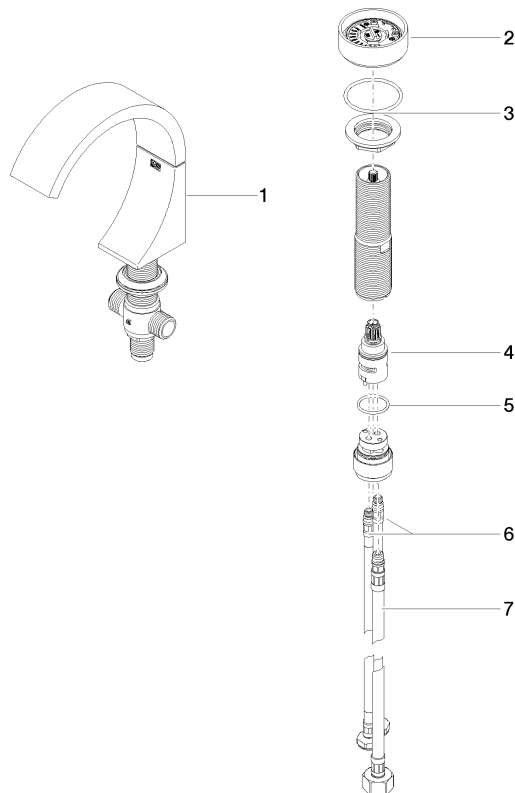
WRAS_2201

LGA_38

CYO Two-hole basin mixer without pop-up waste - Durabron / Brushed Durabron (23kt Gold)

CYO

29 217 811
Parts for other
finishes can be found
here: Chrome



Spare parts list

No.	Item Number	Name	Quantity used	Delivery time
5	09 14 10 112 90	seal	1.00	2
1	13 715 811-38	CYO Deck-mounted basin spout without pop-up waste - Durabron / Brushed Durabron (23kt Gold)	1.00	20
2	90 18 40 290 00-38	handle	1.00	20
6	04 30 04 100 00 90	hose	2.00	2
4	90 90 03 169 00 90	top	1.00	2
3	04 30 11 038 67 90	fixing set	1.00	2
7	04 30 04 019 00 90	hose	1.00	2