

META Single-lever bath mixer for bath rim or tile edge installation - Brushed Platinum

META

29 300 660

Product version from 7/1/2023



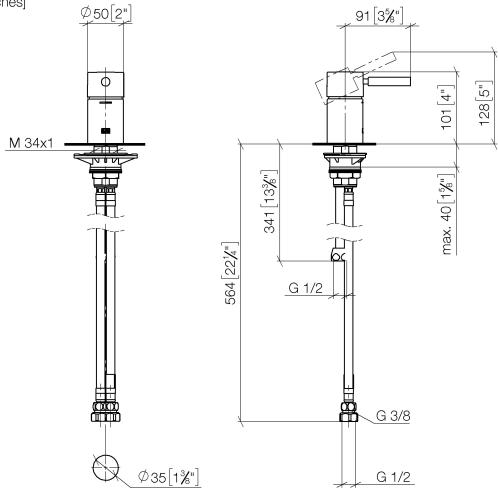
- hole diameter 35 mm
- max. flow 35.7 l/min at 3 bar flow pressure
- WRAS

|   |                               |               |
|---|-------------------------------|---------------|
|    | Brushed Platinum              | 29 300 660-06 |
|    | Chrome                        | 29 300 660-00 |
|    | Dark Chrome                   | 29 300 660-19 |
|    | Light Gold                    | 29 300 660-26 |
|    | Brushed Light Gold            | 29 300 660-27 |
|    | Matte Black                   | 29 300 660-33 |
|    | Brushed Bronze                | 29 300 660-42 |
|    | Brushed Champagne (22kt Gold) | 29 300 660-46 |
|    | Champagne (22kt Gold)         | 29 300 660-47 |
|   | Brushed Chrome                | 29 300 660-93 |
|  | Brushed Dark Platinum         | 29 300 660-99 |

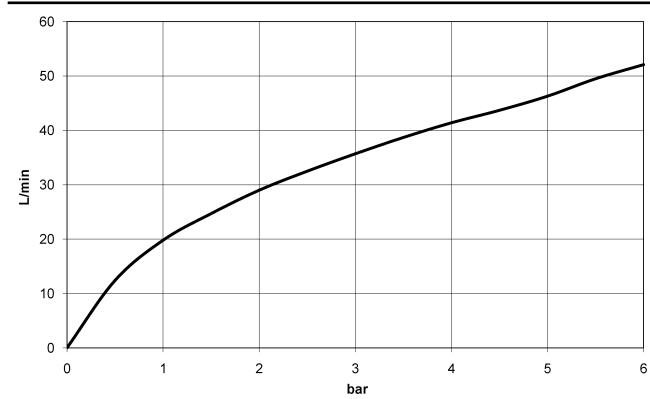
**META Single-lever bath mixer for bath rim or tile edge installation - Brushed  
Platinum**

META

29 300 660 Product version from 7/1/2023  
mm [inches]



Flow rate chart



Codes & Standards

|                |      |                           |                                |
|----------------|------|---------------------------|--------------------------------|
| ASME A112.18.1 | cUPC | Scottish Water<br>Byelaws | UK Water Supply<br>Regulations |
|----------------|------|---------------------------|--------------------------------|



## META Single-lever bath mixer for bath rim or tile edge installation - Brushed Platinum

META

---

29 300 660 Product version from 7/1/2023

Certificates and sustainability

---

WRAS\_2004

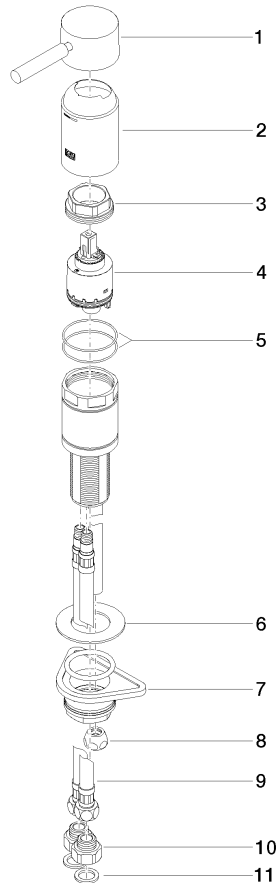
IAPMO\_4976

## META Single-lever bath mixer for bath rim or tile edge installation - Brushed Platinum

META

29 300 660 Product version from 7/1/2023

Parts for other  
finishes can be found  
here: [Chrome](#)



### Spare parts list

| No. | Item Number        | Name               | Quantity used | Delivery time |
|-----|--------------------|--------------------|---------------|---------------|
| 7   | 04 23 10 044 02 90 | fixing set         | 1.00          | 2             |
| 8   | 04 23 30 041 00 90 | threaded connector | 1.00          | 2             |
| 1   | 90 20 66 005 00-06 | handle             | 1.00          | 10            |
| 11  | 09 14 05 004 90    | seal               | 2.00          | 2             |
| 2   | 09 28 30 037-06    | cover              | 1.00          | 10            |
| 6   | 09 30 11 060 90    | disc               | 1.00          | 2             |
| 3   | 09 24 04 448 90    | nut                | 1.00          | 2             |
| 4   | 90 15 05 039 00 90 | cartridge          | 1.00          | 2             |
| 9   | 04 30 04 021 00 90 | hose               | 1.00          | 2             |
| 5   | 09 14 10 201 90    | seal               | 1.00          | 2             |
| 10  | 09 24 03 185-00    | nipple             | 2.00          | 10            |