

TARA Wall-mounted valve cold water without pop-up waste - Brushed Platinum

30 010 892 Product version from 6/30/2009



- 140mm projection
- fixed spout
- circular, air-enriched flow
- adapter with male thread 3/4"
- hole diameter 32 mm
- rosette Ø 55 mm
- max. flow 5.7 l/min
- lead-free
- This product can help a building meet the requirements of Green Building Rating Systems, e.g. LEED®, BREEAM®, DGNB

| | | |
|---|--------------------------------|---------------|
|  | Brushed Platinum | 30 010 892-06 |
|  | Chrome | 30 010 892-00 |
|  | Platinum | 30 010 892-08 |
|  | Dark Chrome | 30 010 892-19 |
|  | Brushed Durabronze (23kt Gold) | 30 010 892-28 |
|  | Matte Black | 30 010 892-33 |
|  | Brushed Bronze | 30 010 892-42 |
|  | Brushed Champagne (22kt Gold) | 30 010 892-46 |
|  | Champagne (22kt Gold) | 30 010 892-47 |
|  | Brushed Chrome | 30 010 892-93 |
|  | Brushed Dark Platinum | 30 010 892-99 |

Recommended miscellaneous

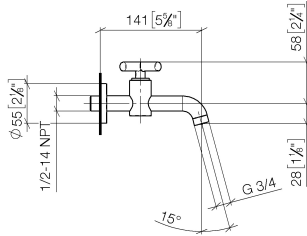


- Concealed wall elbow -** 35 085 970 90
- min. recess depth mm
 - max. recess depth mm

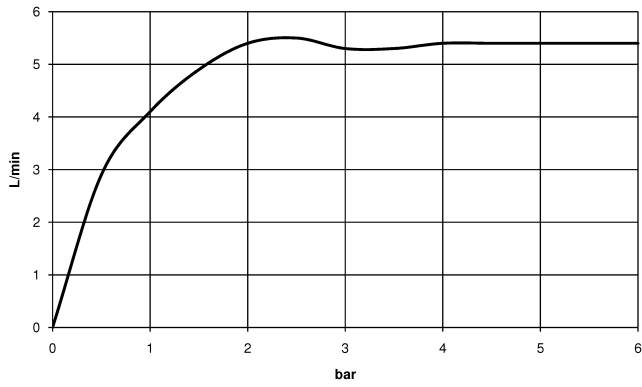
TARA Wall-mounted valve cold water without pop-up waste - Brushed Platinum

30 010 892 Product version from 6/30/2009

mm [inches]



Flow rate chart



Codes & Standards

DIN 4109

ISO 3822

Ü-Zeichen



TARA Wall-mounted valve cold water without pop-up waste - Brushed Platinum

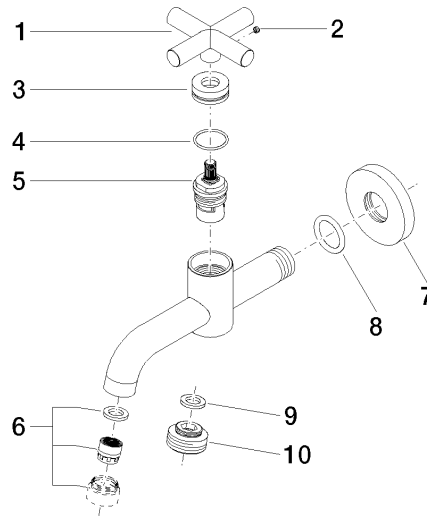
30 010 892 Product version from 6/30/2009

Certificates

LGA_18

TARA Wall-mounted valve cold water without pop-up waste - Brushed Platinum

30 010 892 Product version from 6/30/2009



Spare parts list

| No. | Item Number | Name | Quantity used | Delivery time |
|-----|--------------------|---------|---------------|---------------|
| 1 | 09 20 89 011-06 | handle | 1 | 10 |
| 2 | 09 31 11 055 90 | pin | 1 | 2 |
| 3 | 09 21 02 089-06 | sleeve | 1 | 10 |
| 4 | 09 14 10 085 90 | seal | 1 | 2 |
| 5 | 90 90 03 135 00 90 | top | 1 | 2 |
| 6 | 90 23 01 068 02-06 | aerator | 1 | 10 |
| 7 | 09 27 22 003-06 | rosette | 1 | 10 |
| 8 | 90 14 10 026 00 90 | seal | 1 | 2 |
| 9 | 90 14 05 020 00 90 | seal | 1 | 2 |
| 10 | 09 24 03 012-06 | nipple | 1 | 10 |