

LOT BAR TAP Two-hole mixer with individual rosettes - Champagne (22kt Gold)

LOT

32 805 680	Product version from 6/1/2022		
	<ul style="list-style-type: none"> • 165mm projection • pivotable spout 360° • air-enriched flow • height of mixer 230 mm • height up to laminar flow regulator 205 mm • individual rosette 55 x 55 mm • hole diameter spout 35 mm • single-lever mixer hole diameter 44 mm • max. flow 8 l/min at 3 bar flow pressure • lead-free • WRAS • This product can help a building meet the requirements of Green Building Rating Systems, e.g. LEED®, BREEAM®, DGNB <p>Operating unit can be positioned freely.</p>	<div>  Champagne (22kt Gold) </div> <div>  Chrome </div> <div>  Brushed Platinum </div> <div>  Platinum </div> <div>  Dark Chrome </div> <div>  Brushed Durabronze (23kt Gold) </div> <div>  Brushed Bronze </div> <div>  Brushed Champagne (22kt Gold) </div> <div>  Brushed Dark Platinum </div>	<div>32 805 680-47</div> <div>32 805 680-00</div> <div>32 805 680-06</div> <div>32 805 680-08</div> <div>32 805 680-19</div> <div>32 805 680-28</div> <div>32 805 680-42</div> <div>32 805 680-46</div> <div>32 805 680-99</div>

Recommended miscellaneous

	Dispenser with rosette - Champagne (22kt Gold)	82 439 970-47
---	---	---------------

Recommended miscellaneous

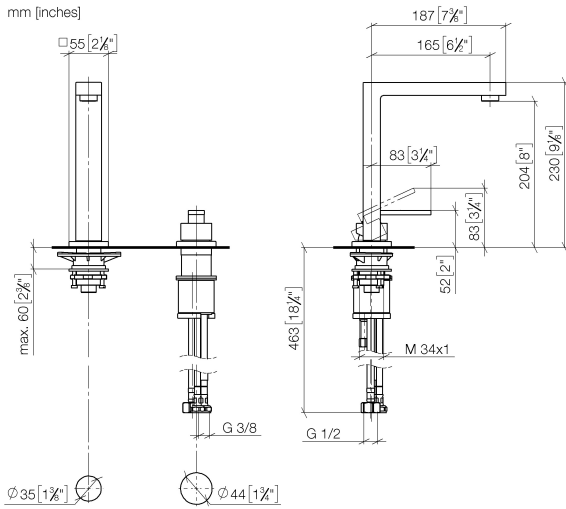
	Strainer waste with control handle - Champagne (22kt Gold)	10 711 970-47
---	---	---------------

LOT BAR TAP Two-hole mixer with individual rosettes - Champagne (22kt Gold)

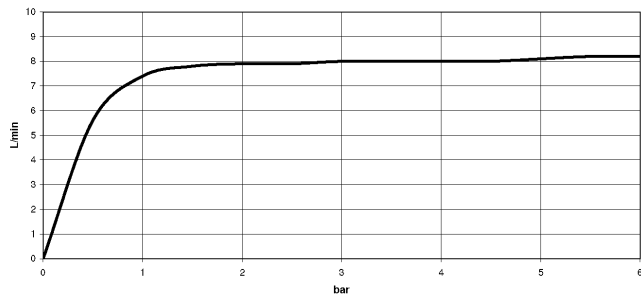
LOT

32 805 680 Product version from 6/1/2022

mm [inches]



Flow rate chart



Codes & Standards

DIN 4109

Executive Order
no. 1007

ISO 3822

Scottish Water
Byelaws

UK Water Supply
Regulations

Ü-Zeichen



LOT BAR TAP Two-hole mixer with individual rosettes - Champagne (22kt Gold)

LOT

32 805 680 Product version from 6/1/2022

Certificates and sustainability

GDV_0400

LGA_18

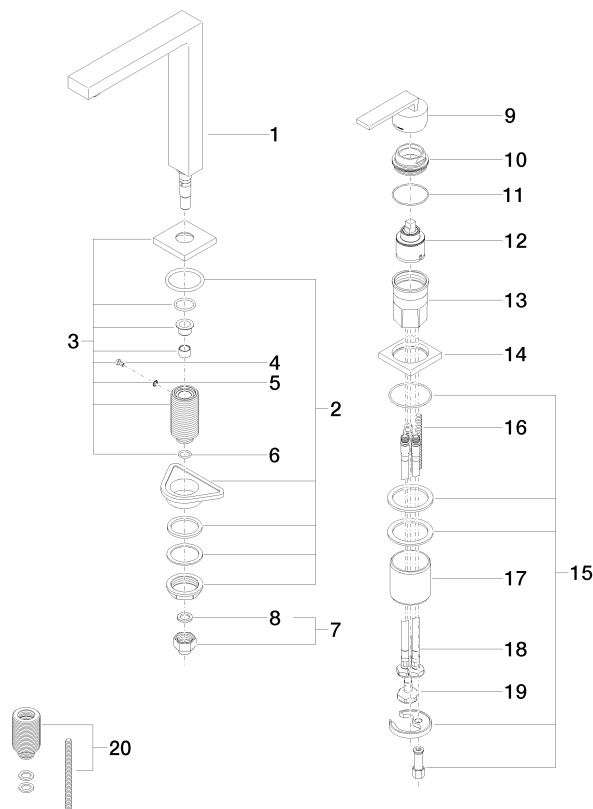
WRAS_250402

LOT BAR TAP Two-hole mixer with individual rosettes - Champagne (22kt Gold)

LOT

32 805 680 Product version from 6/1/2022

Parts for other
finishes can be found
here: [Chrome](#)



Spare parts list

No.	Item Number	Name	Quantity used	Delivery time
18	04 30 04 104 00 90	hose	2.00	2
16	09 31 11 011 90	pin	1.00	2
2	04 23 10 044 01 90	fixing set	1.00	2
7	04 24 04 166 10 90	nipple	1.00	2
14	09 27 78 007-47	rosette	1.00	30
10	09 24 04 142-47	nut	1.00	30
1	90 11 06 192 04-47	spout	1.00	30
15	04 30 11 038 02 90	fixing set	1.00	2
13	09 30 01 100 10 90	sleeve	1.00	2
5	09 30 11 028 90	disc	1.00	2
9	90 20 78 040 00-47	handle	1.00	30
17	09 18 40 079 90	sleeve	1.00	2
20	12 802 970 90	Extension set -	1.00	60
4	09 30 30 057 90	screw	1.00	2
11	09 14 10 037 90	seal	1.00	2
19	04 30 04 019 00 90	hose	1.00	2
3	90 27 78 023 00-47	rosette	1.00	30
8	90 14 20 002 00 90	seal	1.00	2
6	90 14 10 077 00 90	seal	1.00	2
12	90 15 05 045 00 90	cartridge	1.00	2