









LISSE Single-lever basin mixer with raised base with pop-up waste - Matte Black

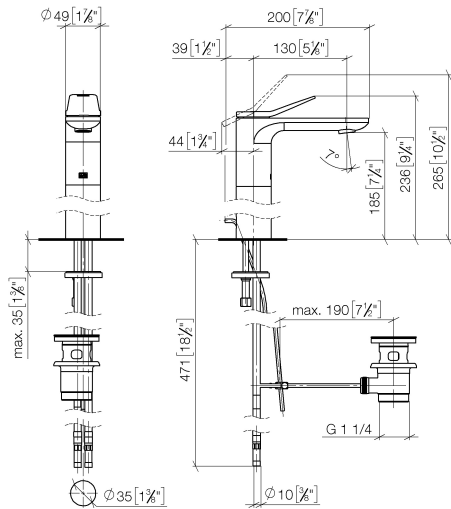
LISSE

33 506 845    Product version from 3/9/2016 to 10/31/2018			
	<ul style="list-style-type: none"> <li>• 130mm projection</li> <li>• fixed spout</li> <li>• circular, air-enriched flow</li> <li>• height of mixer 236 mm</li> <li>• height up to aerator 185 mm</li> <li>• hole diameter 35 mm</li> <li>• 2x screw-in M 8 x 1 pressure hose, leak-tested</li> <li>• max. flow 5.7 l/min</li> <li>• lead-free</li> <li>• This product can help a building meet the requirements of Green Building Rating Systems, e.g. LEED®, BREEAM®, DGNB</li> <li>• WRAS</li> </ul>		
	Only suitable for basins with an overflow.		
			Matte Black
			33 506 845-33
			Chrome
			33 506 845-00
			Brushed Platinum
			33 506 845-06
			Dark Chrome
			33 506 845-19
			Brushed Light Gold
			33 506 845-27
			Brushed Chrome
			33 506 845-93
			Brushed Dark Platinum
			33 506 845-99

# LISSE Single-lever basin mixer with raised base with pop-up waste - Matte Black

LISSE

33 506 845 Product version from 3/9/2016 to 10/31/2018  
mm [inches]



Flow rate chart



## Codes & Standards

DIN 4109

Executive Order  
no. 1007

ISO 3822

Scottish Water  
Byelaws

UK Water Supply  
Regulations

Ü-Zeichen



## LISSE Single-lever basin mixer with raised base with pop-up waste - Matte Black

LISSE

---

33 506 845 Product version from 3/9/2016 to 10/31/2018

Certificates and sustainability

---

LGA\_29

GDV\_0400

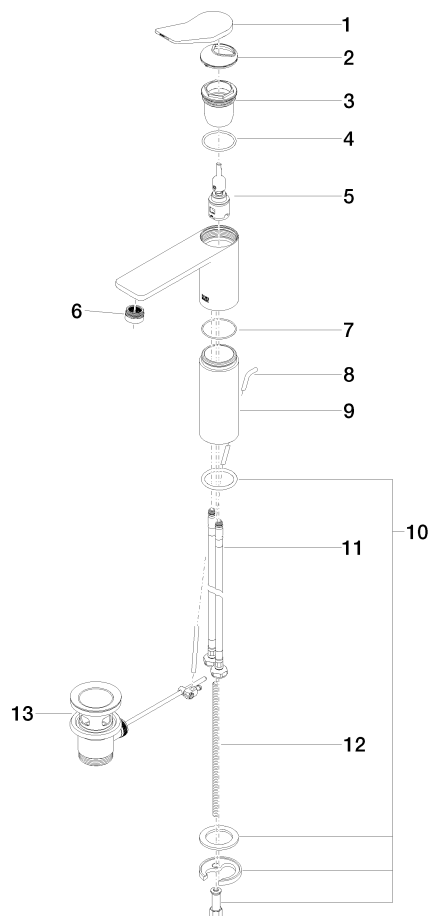
WRAS\_250402

# **LISSE Single-lever basin mixer with raised base with pop-up waste - Matte Black**

LISSE

33 506 845 Product version from 3/9/2016 to 10/31/2018

Parts for other  
finishes can be found  
here: [Chrome](#)



## **Spare parts list**

No.	Item Number	Name	Quantity used	Delivery time
	12 09 31 11 000 90	pin	1.00	2
	3 09 23 10 123 90	nut	1.00	2
	1 90 20 84 020 00-33	handle	1.00	30
	9 09 28 22 305-33	sleeve	1.00	30
	10 04 30 11 038 75 90	fixing set	1.00	2
	5 90 15 05 042 01 90	cartridge	1.00	2
	11 04 30 04 101 00 90	hose	2.00	2
	7 09 14 10 108 90	seal	1.00	2
	6 90 23 01 161 01-33	aerator	1.00	30
	2 09 28 30 034 90	cover	1.00	2
	8 09 31 09 120-33	pull-rod	1.00	30
	4 09 14 10 038 90	seal	1.00	2
	13 90 11 01 001 00-33	pop-up waste	1.00	30