

MEM Single-lever basin mixer without pop-up waste - Champagne (22kt Gold)

MEM

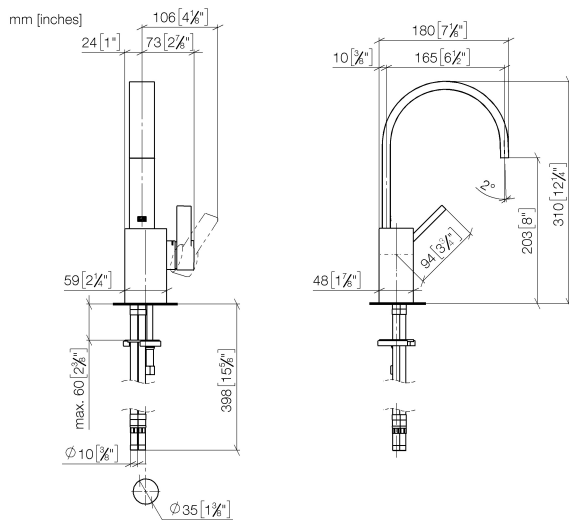
33 521 782 Product version from 5/5/2021



- 165mm projection
- fixed spout
- rectangular, air-enriched flow
- height of mixer 310 mm
- height up to aerator 202 mm
- hole diameter 35 mm
- 2x screw-in M 10 x 1 pressure hose, leak-tested
- max. flow 5.7 l/min
- lead-free
- WRAS
- This product can help a building meet the requirements of Green Building Rating Systems, e.g. LEED®, BREEAM®, DGNB

	Champagne (22kt Gold)	33 521 782-47
	Chrome	33 521 782-00
	Brushed Platinum	33 521 782-06
	Platinum	33 521 782-08
	Dark Chrome	33 521 782-19
	Brushed Durabronze (23kt Gold)	33 521 782-28
	Brushed Champagne (22kt Gold)	33 521 782-46
	Brushed Dark Platinum	33 521 782-99

33 521 782 Product version from 5/5/2021



Flow rate chart



Codes & Standards

DIN 4109	EN 817	Executive Order no. 1007	ISO 3822
Scottish Water Byelaws	UK Water Supply Regulations	Ü-Zeichen	VA-Zeichen



MEM Single-lever basin mixer without pop-up waste - Champagne (22kt Gold)

MEM

33 521 782 Product version from 5/5/2021

Certificates and sustainability

ETA_18	LGA_28	GDV_0400	WRAS_240202
--------	--------	----------	-------------

33 521 782 Product version from 5/5/2021

Parts for other
finishes can be found
here: [Chrome](#)

