

VAIA Single-lever basin mixer without pop-up waste - Dark Chrome

VAIA

33 522 809

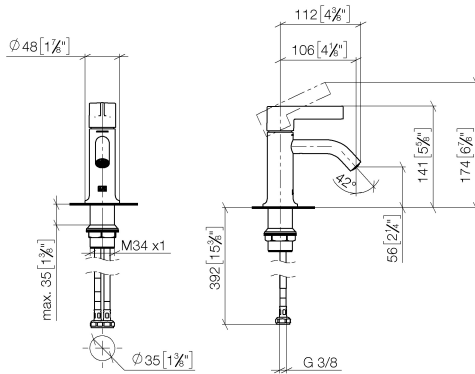


- 106mm projection
- fixed spout
- circular, air-enriched flow
- height of mixer 141 mm
- height up to aerator 56 mm
- hole diameter 35 mm
- 2x screw-in M 8 x 1 pressure hose, leak-tested
- max. flow 5.7 l/min
- lead-free
- This product can help a building meet the requirements of Green Building Rating Systems, e.g. LEED®, BREEAM®, DGNB
- WRAS

	Dark Chrome	33 522 809-19
	Chrome	33 522 809-00
	Brushed Platinum	33 522 809-06
	Platinum	33 522 809-08
	Brushed Durabronze (23kt Gold)	33 522 809-28
	Brushed Bronze	33 522 809-42
	Brushed Champagne (22kt Gold)	33 522 809-46
	Champagne (22kt Gold)	33 522 809-47
	Brushed Dark Platinum	33 522 809-99

33 522 809

mm [inches]



Flow rate chart



Codes & Standards

DIN 4109

ISO 3822

Scottish Water
Byelaws

UK Water Supply
Regulations

Ü-Zeichen



VAIA Single-lever basin mixer without pop-up waste - Dark Chrome

VAIA

33 522 809

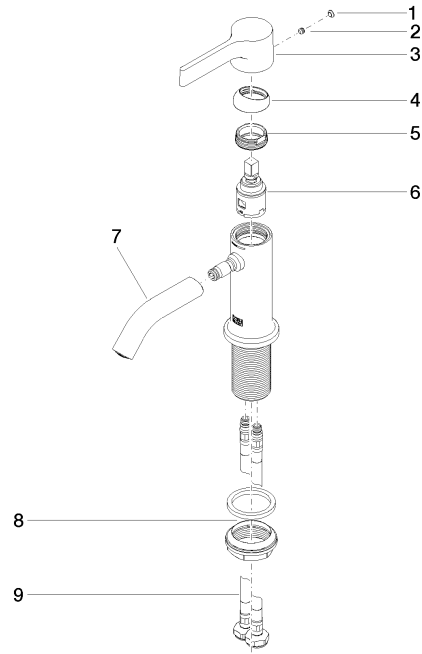
Certificates and sustainability

LGA_38

WRAS_240102

33 522 809

Parts for other
finishes can be found
here: [Chrome](#)



Spare parts list

No.	Item Number	Name	Quantity used	Delivery time
7	90 11 06 215 00-19	spout	1.00	20
9	04 30 04 100 00 90	hose	2.00	2
1	90 31 20 087 00-19	plug	1.00	20
8	04 23 10 044 07 90	fixing set	1.00	2
6	90 15 05 042 00 90	cartridge	1.00	2
5	09 24 04 266 90	nut	1.00	2
3	09 20 80 020-19	handle	1.00	20
4	09 28 30 021-19	cover	1.00	20
2	90 31 11 063 00 90	pin	1.00	2