








IMO Single-lever basin mixer without pop-up waste - Brushed Dark Platinum

IMO

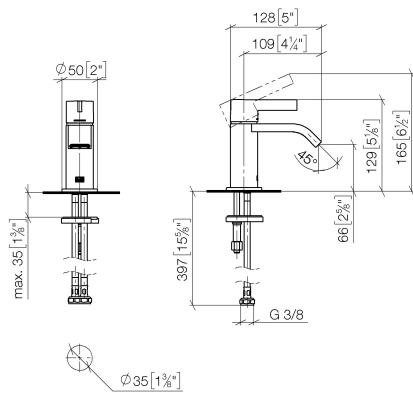
33 525 671 Product version from 4/1/2024



- 105mm projection
- fixed spout
- rectangular, air-enriched flow
- height of mixer 129 mm
- height up to aerator 66 mm
- hole diameter 35 mm
- rosette Ø 50 mm optional
- max. flow 4.6 l/min
- lead-free
- This product can help a building meet the requirements of Green Building Rating Systems, e.g. LEED®, BREEAM®, DGNB

	Brushed Dark Platinum	33 525 671-99
	Chrome	33 525 671-00
	Brushed Platinum	33 525 671-06
	Dark Chrome	33 525 671-19
	Brushed Light Gold	33 525 671-27
	Matte Black	33 525 671-33
	Brushed Chrome	33 525 671-93

mm [inches]



Flow rate chart



Codes & Standards

DIN 4109

ISO 3822

Scottish Water
Byelaws

UK Water Supply
Regulations

Ü-Zeichen



IMO Single-lever basin mixer without pop-up waste - Brushed Dark Platinum

IMO

33 525 671 Product version from 4/1/2024

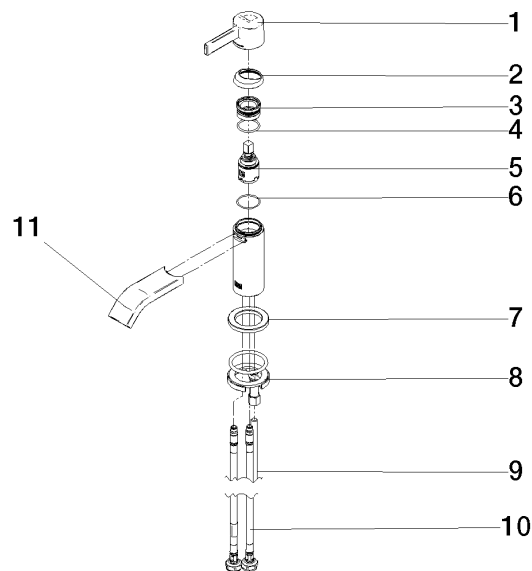
Certificates and sustainability

LGA_19

WRAS_250102

33 525 671 Product version from 4/1/2024

Parts for other
finishes can be found
here: [Chrome](#)



Spare parts list

No.	Item Number	Name	Quantity used	Delivery time
11	90 28 22 402 00-99	spout	1.00	20
7	09 27 66 006-99	rosette	1.00	20
10	04 30 04 100 00 90	hose	2.00	2
5	90 15 05 042 00 90	cartridge	1.00	2
4	09 14 10 112 90	seal	1.00	2
6	09 14 10 224 90	seal	1.00	2
1	90 20 67 032 00-99	handle	1.00	20
3	90 23 10 146 00 90	nut	1.00	2
9	09 31 11 012 90	pin	1.00	2
8	04 30 11 038 00 90	fixing set	1.00	2
2	90 28 30 060 00-99	cover	1.00	-

Spare part can no longer be ordered, please order the replacement item