

VAIA Single-lever mixer - Brushed Dark Platinum
VAIA

33 800 809
Product version from 7/1/2023



- 202mm projection
- pivotable spout 360°
- air-enriched flow
- max. flow 7 l/min at 3 bar flow pressure
- lead-free
- This product can help a building meet the requirements of Green Building Rating Systems, e.g. LEED®, BREEAM®, DGNB
- WRAS

	Brushed Dark Platinum	33 800 809-99
	Chrome	33 800 809-00
	Brushed Platinum	33 800 809-06
	Platinum	33 800 809-08
	Durabrass (23kt Gold)	33 800 809-09
	Dark Chrome	33 800 809-19
	Brushed Durabrass (23kt Gold)	33 800 809-28
	Matte Black	33 800 809-33
	Brushed Bronze	33 800 809-42
	Brushed Champagne (22kt Gold)	33 800 809-46
	Champagne (22kt Gold)	33 800 809-47
	Brushed Chrome	33 800 809-93

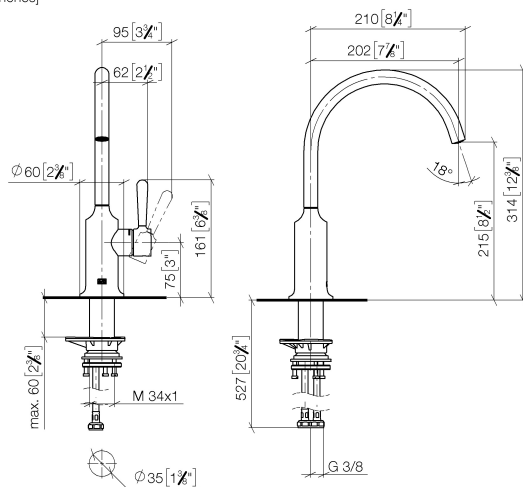
Recommended miscellaneous

VAIA Dispenser with rosette -
Brushed Dark Platinum
82 434 809-99

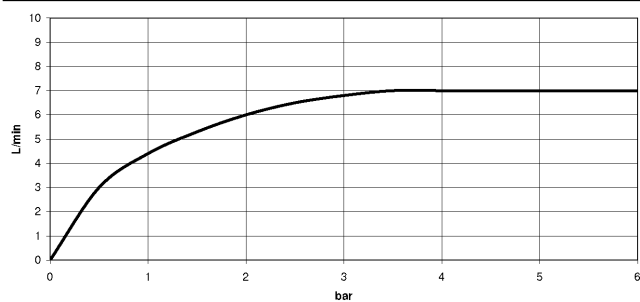


33 800 809 Product version from 7/1/2023

mm [inches]



Flow rate chart



Codes & Standards

DIN 4109

ISO 3822

Scottish Water
Byelaws

UK Water Supply
Regulations

Ü-Zeichen



VAIA Single-lever mixer - Brushed Dark Platinum

VAIA

33 800 809 Product version from 7/1/2023

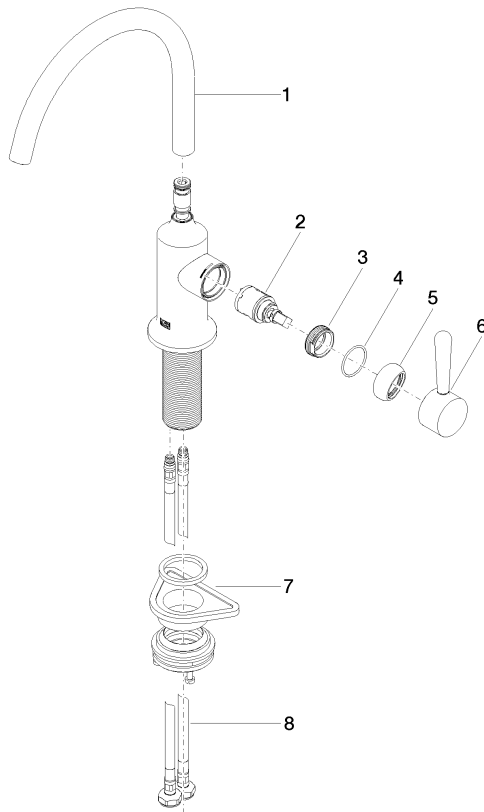
Certificates and sustainability

LGA_29

WRAS_240602

33 800 809 Product version from 7/1/2023

Parts for other
finishes can be found
here: [Chrome](#)



Spare parts list

No.	Item Number	Name	Quantity used	Delivery time
2	90 15 05 042 00 90	cartridge	1.00	2
5	90 28 30 052 00-99	cover	1.00	20
1	90 28 22 313 02-99	spout	1.00	20
3	09 24 04 266 90	nut	1.00	2
7	04 23 10 044 08 90	fixing set	1.00	2
6	90 20 80 050 00-99	handle	1.00	20
8	04 30 04 100 00 90	hose	2.00	2
4	09 14 10 091 90	seal	1.00	2