

**TARA BAR TAP Single-lever mixer - Durabrand (23kt Gold)**

TARA

33 805 888 Product version from 1/1/2025



- 166mm projection
- pivotable spout 360°
- laminar flow
- height of mixer 302 mm
- height up to laminar flow regulator 185 mm
- hole diameter 35 mm
- max. flow 8.3 l/min at 3 bar flow pressure
- lead-free
- This product can help a building meet the requirements of Green Building Rating Systems, e.g. LEED®, BREEAM®, DGNB
- WRAS

	Durabrand (23kt Gold)	33 805 888-09
	Chrome	33 805 888-00
	Brushed Platinum	33 805 888-06
	Platinum	33 805 888-08
	Dark Chrome	33 805 888-19
	Brushed Durabrand (23kt Gold)	33 805 888-28
	Matte Black	33 805 888-33
	Brushed Bronze	33 805 888-42
	Brushed Champagne (22kt Gold)	33 805 888-46
	Champagne (22kt Gold)	33 805 888-47
	Brushed Chrome	33 805 888-93
	Brushed Dark Platinum	33 805 888-99

**Recommended miscellaneous**

**Dispenser with rosette - Durabrand (23kt Gold)**

82 444 970-09



**Recommended miscellaneous**

**Strainer waste with control handle - Durabrand (23kt Gold)**

10 710 970-09





Flow rate chart



## Codes & Standards

DIN 4109

ISO 3822

Scottish Water  
Byelaws

UK Water Supply  
Regulations

## Ü-Zeichen



## TARA BAR TAP Single-lever mixer - Durabronss (23kt Gold)

---

TARA

33 805 888 Product version from 1/1/2025

Certificates and sustainability

---

LGA\_38

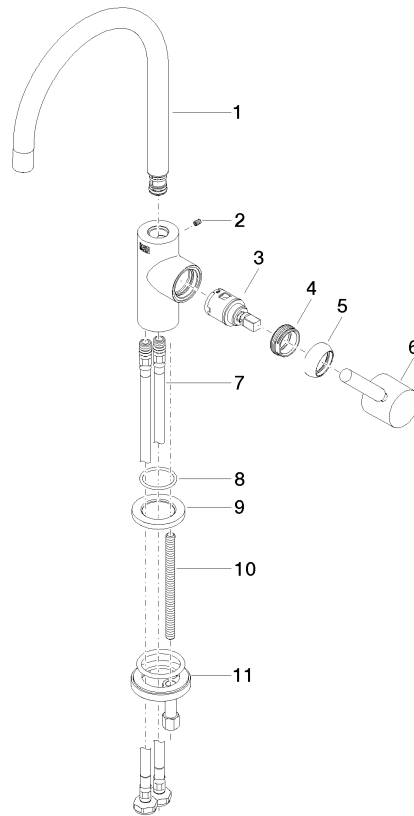
WRAS\_240102

# TARA BAR TAP Single-lever mixer - Durabross (23kt Gold)

TARA

33 805 888 Product version from 1/1/2025

Parts for other  
finishes can be found  
here: [Chrome](#)



## Spare parts list

No.	Item Number	Name	Quantity used	Delivery time
4	09 24 04 266 90	nut	1.00	2
11	04 30 11 038 64 90	fixing set	1.00	2
8	09 14 10 118 90	seal	1.00	2
5	09 28 30 021-09	cover	1.00	60
3	90 15 05 042 00 90	cartridge	1.00	2
2	09 31 11 008 90	pin	1.00	2
1	90 28 22 393 00-09	spout	1.00	40
7	04 30 04 105 00 90	hose	2.00	2
6	90 20 66 003 00-09	handle	1.00	40
9	09 27 85 001-09	rosette	1.00	40
10	09 31 11 012 90	pin	1.00	2