

TARA Single-lever mixer for rinsing/Profi spray - Brushed Platinum

TARA

33 836 888 Product version from 4/1/2024



- 235mm projection
- pivotable spout 360°
- air-enriched flow
- height of mixer 400 mm
- height up to aerator 230 mm
- single-lever mixer hole diameter 35mm
- max. flow 7 l/min at 3 bar flow pressure
- lead-free
- This product can help a building meet the requirements of Green Building Rating Systems, e.g. LEED®, BREEAM®, DGNB

Single-lever mixer for combining with rinsing/Profi spray only

	Brushed Platinum	33 836 888-06
	Chrome	33 836 888-00
	Platinum	33 836 888-08
	Durabronze (23kt Gold)	33 836 888-09
	Dark Chrome	33 836 888-19
	Brushed Durabronze (23kt Gold)	33 836 888-28
	Matte Black	33 836 888-33
	Brushed Dark Brass	33 836 888-39
	Brushed Bronze	33 836 888-42
	Brushed Champagne (22kt Gold)	33 836 888-46
	Champagne (22kt Gold)	33 836 888-47
	Brushed Chrome	33 836 888-93
	Brushed Dark Platinum	33 836 888-99

Recommended miscellaneous

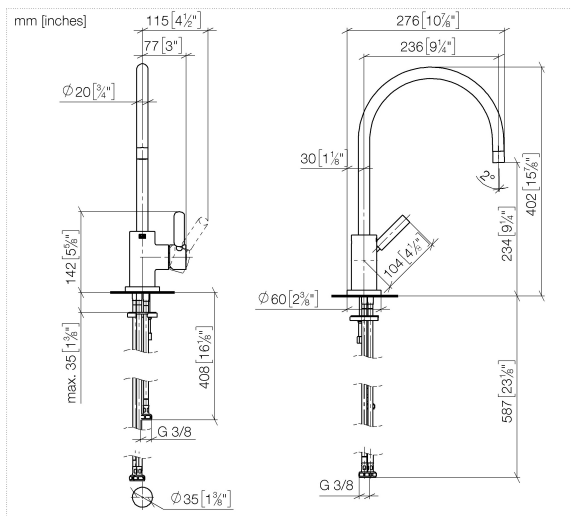
Strainer waste with control handle - Brushed Platinum 10 710 970-06



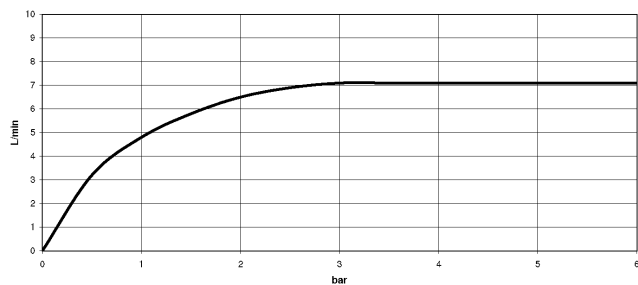
Recommended miscellaneous

Dispenser with rosette - Brushed Platinum 82 444 970-06





Flow rate chart



Codes & Standards

DIN 4109

ISO 3822

Ü-Zeichen



TARA Single-lever mixer for rinsing/Profi spray - Brushed Platinum

TARA

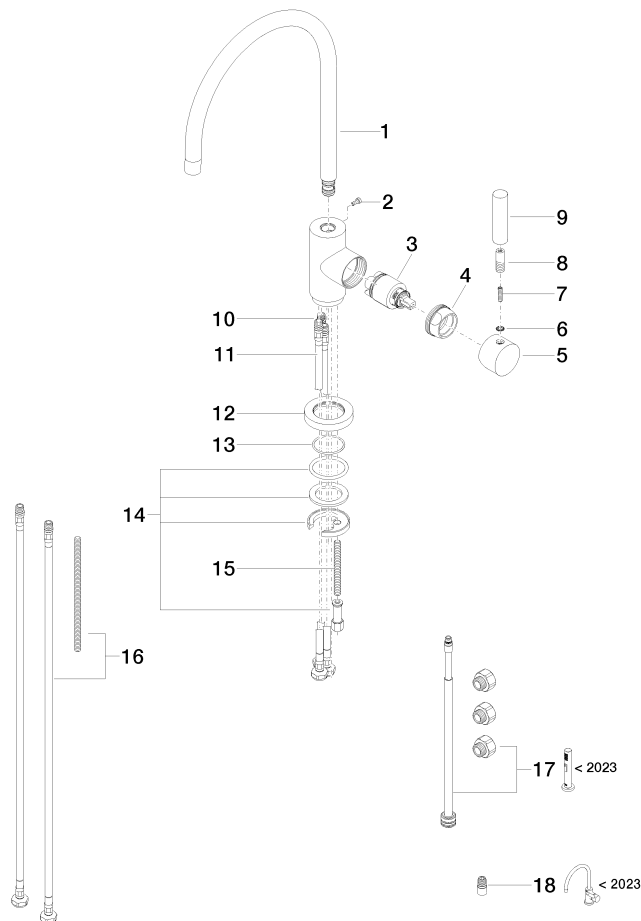
33 836 888 Product version from 4/1/2024

Certificates and sustainability

LGA_38	LGA_38	LGA_38
--------	--------	--------

33 836 888 Product version from 4/1/2024

Parts for other
finishes can be found
here: [Chrome](#)



Spare parts list

No.	Item Number	Name	Quantity used	Delivery time
	10 04 30 04 104 00 90	hose	1.00	2
	14 04 30 11 038 00 90	fixing set	1.00	2
	4 09 24 04 107-06	nut	1.00	10
	6 90 30 11 032 00 90	disc	1.00	2
	17 90 17 09 046 13 90	conversion kit	1.00	2
	12 09 28 10 055-06	rosette	1.00	10
	15 09 31 11 011 90	pin	1.00	2
	11 04 30 04 105 00 90	hose	2.00	2
	2 09 30 30 054 90	screw	1.00	2
	8 90 24 04 048 00-06	nipple	1.00	10
	1 90 28 22 049 02-06	spout	1.00	10
	16 12 803 970 90	extension	1.00	60
	5 90 20 88 040 00-06	handle	1.00	10
	7 09 31 11 010 90	pin	1.00	2
	18 90 24 03 537 01 90	adaptor	1.00	2
	3 90 15 05 065 00 90	cartridge	1.00	2
	13 09 14 10 034 90	seal	1.00	2
	9 11 170 880-06	handle	1.00	10