

TARA Single-lever mixer for rinsing/Profi spray - Brushed Durabrass (23kt Gold)

TARA

33 836 888 Product version from 4/1/2024



- 235mm projection
- pivotable spout 360°
- air-enriched flow
- height of mixer 400 mm
- height up to aerator 230 mm
- single-lever mixer hole diameter 35mm
- max. flow 7 l/min at 3 bar flow pressure
- lead-free
- This product can help a building meet the requirements of Green Building Rating Systems, e.g. LEED®, BREEAM®, DGNB

Single-lever mixer for combining with rinsing/Profi spray only

	Brushed Durabrass (23kt Gold)	33 836 888-28
	Chrome	33 836 888-00
	Brushed Platinum	33 836 888-06
	Platinum	33 836 888-08
	Durabrass (23kt Gold)	33 836 888-09
	Dark Chrome	33 836 888-19
	Matte Black	33 836 888-33
	Brushed Dark Brass	33 836 888-39
	Brushed Bronze	33 836 888-42
	Brushed Champagne (22kt Gold)	33 836 888-46
	Champagne (22kt Gold)	33 836 888-47
	Brushed Chrome	33 836 888-93
	Brushed Dark Platinum	33 836 888-99

Recommended miscellaneous

**Strainer waste with control handle - Brushed Durabrass (23kt Gold)** 10 710 970-28



Recommended miscellaneous

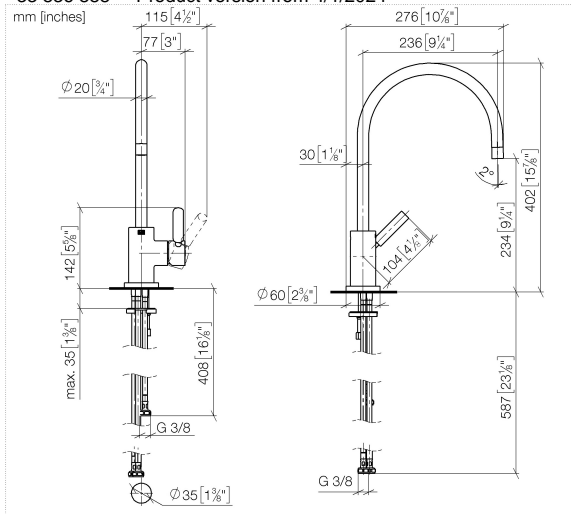
**Dispenser with rosette - Brushed Durabrass (23kt Gold)** 82 444 970-28



# TARA Single-lever mixer for rinsing/Profi spray - Brushed Durabron (23kt Gold)

TARA

33 836 888 Product version from 4/1/2024



## Flow rate chart



## Codes & Standards

DIN 4109

ISO 3822

Ü-Zeichen



TARA Single-lever mixer for rinsing/Profi spray - Brushed Durabrass (23kt Gold)

TARA

33 836 888    Product version from 4/1/2024

Certificates and sustainability

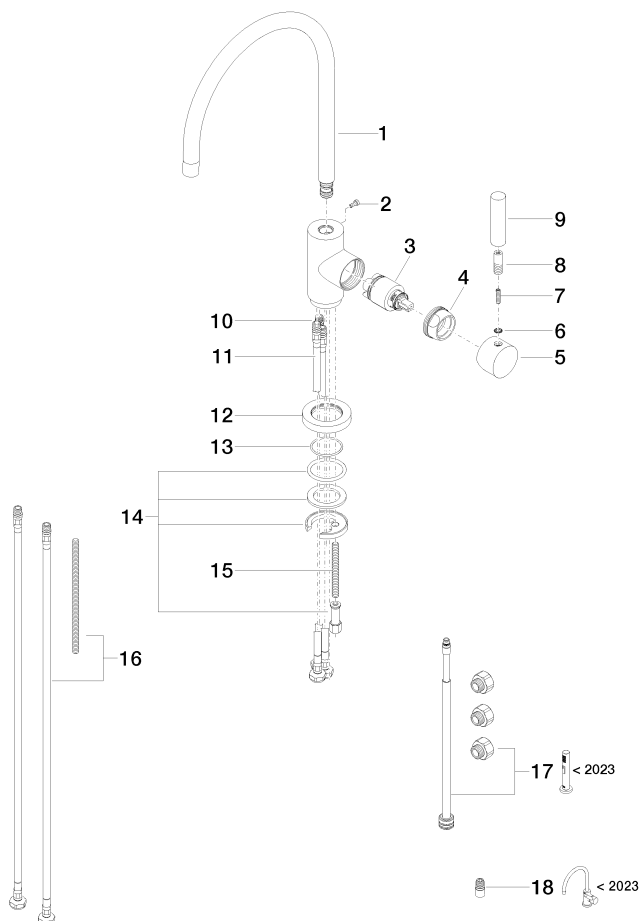
LGA_38	LGA_38	LGA_38
--------	--------	--------

# TARA Single-lever mixer for rinsing/Profi spray - Brushed Durabronz (23kt Gold)

TARA

33 836 888 Product version from 4/1/2024

Parts for other  
finishes can be found  
here: [Chrome](#)



## Spare parts list

No.	Item Number	Name	Quantity used	Delivery time
17	90 17 09 046 13 90	conversion kit	1.00	2
1	90 28 22 049 02-28	spout	1.00	20
4	09 24 04 107-28	nut	1.00	20
18	90 24 03 537 01 90	adaptor	1.00	2
10	04 30 04 104 00 90	hose	1.00	2
15	09 31 11 011 90	pin	1.00	2
5	90 20 88 040 00-28	handle	1.00	20
11	04 30 04 105 00 90	hose	2.00	2
7	09 31 11 010 90	pin	1.00	2
12	09 28 10 055-28	rosette	1.00	20
14	04 30 11 038 00 90	fixing set	1.00	2
6	90 30 11 032 00 90	disc	1.00	2
3	90 15 05 065 00 90	cartridge	1.00	2
8	90 24 04 048 00-28	nipple	1.00	20
9	11 170 880-28	handle	1.00	-
Spare part can no longer be ordered, please order the replacement item				
2	09 30 30 054 90	screw	1.00	2
16	12 803 970 90	extension	1.00	60
13	09 14 10 034 90	seal	1.00	2