

**Concealed two-way diverter -**

SERIES-VARIOUS

35 202 970 90    Product version from 4/1/2022



- red brass, lead-free
- 1x male 1/2" connector
- 2x female thread 1/2" outlet
- cut-to-length spindle and sleeve
- dust cover
- anti-water packing
- soundproofing
- WRAS

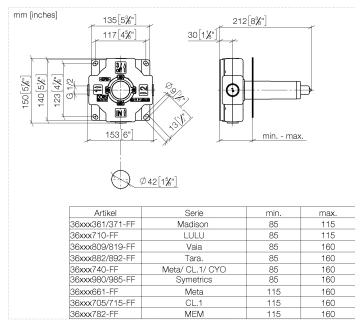
**Recommended miscellaneous**

**Leak protection 1/2" -**

12 010 970 90



35 202 970 90    Product version from 4/1/2022



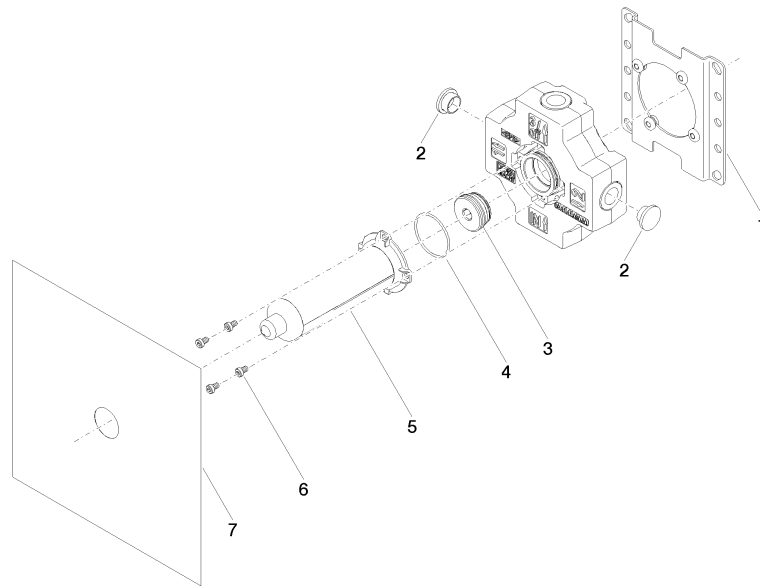
### Codes & Standards

Scottish Water  
Byelaws

UK Water Supply  
Regulations

### Certificates and sustainability

WRAS\_2307



## Spare parts list

No.	Item Number	Name	Quantity used	Delivery time
5	04 21 02 180 10 90	cap	1.00	2
6	09 30 30 112 90	screw	4.00	2
2	09 31 20 092 90	plug	4.00	2
3	90 31 20 131 00 90	plug	1.00	2
7	04 14 03 116 00 90	gasket kit	1.00	2
4	09 14 10 210 90	seal	1.00	2
1	04 17 20 252 00 90	base	1.00	60