

SERENITY SKY+ Concealed ceiling installation box -

SERIES-VARIOUS

35 780 970 90 Product version from 9/1/2024



- concealed rough parts
- flush-mounted reflection box, 662 x 482 mm, RAL 9003, Signal White
- max. recess depth 590 mm
- min. recess depth 150 mm
- 5x 1/2" female connector
- weight 15kg
- Recommended control element: xTool
- Not suitable for use in a steam room.

Recommended miscellaneous

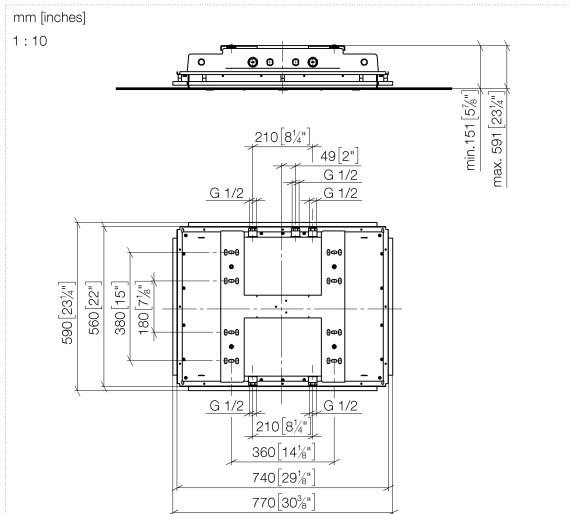
Leak protection 1/2" -

12 010 970 90

- This article is needed 5x.



35 780 970 90 Product version from 9/1/2024



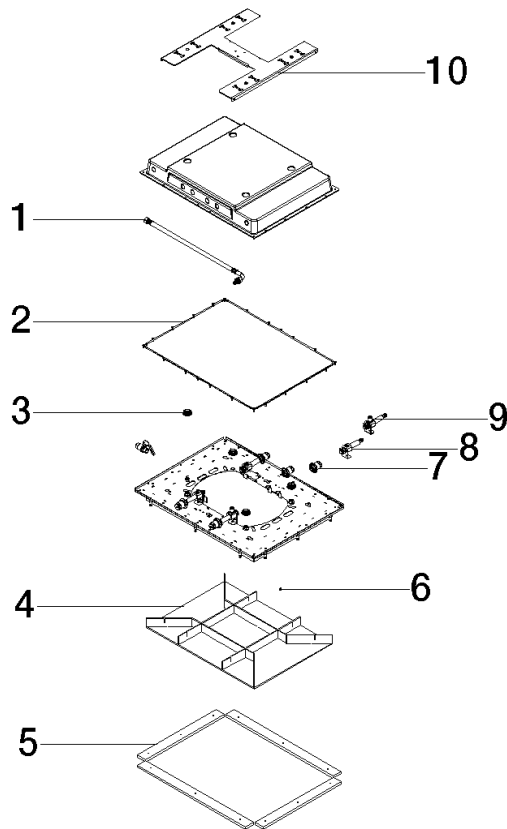
Codes & Standards

Scottish Water
Byelaws

UK Water Supply
Regulations

Certificates and sustainability

WRAS_250102



Spare parts list

No.	Item Number	Name	Quantity used	Delivery time
6	91 30 30 194 00 90	screw	1.00	2
4	90 91 42 195 01 90	lid	1.00	2
2	90 14 03 194 00 90	seal	1.00	2
1	90 30 04 099 00 90	hose	1.00	2
8	90 17 20 308 01 90	connection	1.00	2
10	90 17 20 304 00 90	holder	1.00	2
7	90 24 03 305 00 90	fixing set	1.00	2
3	91 31 20 530 00 90	nipple set	1.00	2
9	90 17 20 308 00 90	connection	1.00	2
5	90 18 30 020 00 90	sleeve	1.00	2