



Concealed single-lever mixer with cover plate with integrated shower connection - Brushed Platinum

SERIES SPECIFIC

36 046 660    Product version from 4/1/2024



- cover plate Ø 80 mm
- Intrinsic protection against back flow.**
- Intrinsic protection against back flow.

|   |                                |               |
|---|--------------------------------|---------------|
|    | Brushed Platinum               | 36 046 660-06 |
|    | Chrome                         | 36 046 660-00 |
|    | Platinum                       | 36 046 660-08 |
|    | Dark Chrome                    | 36 046 660-19 |
|    | Brushed Durabronze (23kt Gold) | 36 046 660-28 |
|    | Matte Black                    | 36 046 660-33 |
|    | Brushed Bronze                 | 36 046 660-42 |
|    | Brushed Champagne (22kt Gold)  | 36 046 660-46 |
|    | Champagne (22kt Gold)          | 36 046 660-47 |
|   | Brushed Chrome                 | 36 046 660-93 |
|  | Brushed Dark Platinum          | 36 046 660-99 |

Required miscellaneous

- Concealed wall mounting -**                      35 050 970 90
- min. recess depth 80 mm
  - max. recess depth 105 mm

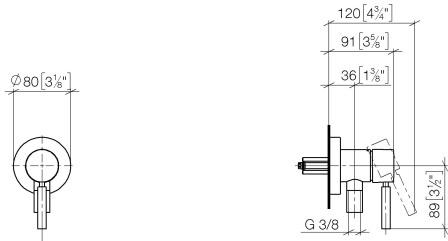




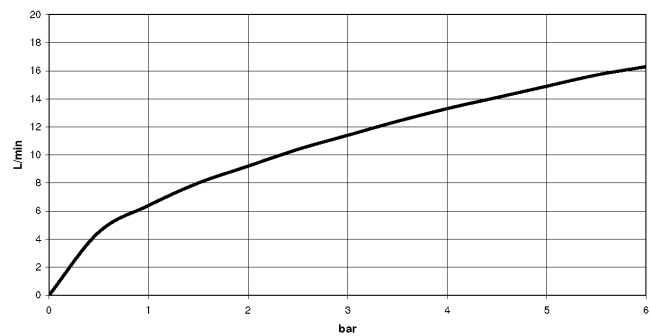
Concealed single-lever mixer with cover plate with integrated shower connection - Brushed Platinum

SERIES SPECIFIC

36 046 660 Product version from 4/1/2024  
mm [inches]



Flow rate chart



Codes & Standards

DIN 4109

ISO 3822

Ü-Zeichen



## Concealed single-lever mixer with cover plate with integrated shower connection - Brushed Platinum

---

SERIES SPECIFIC

36 046 660 Product version from 4/1/2024

Certificates and sustainability

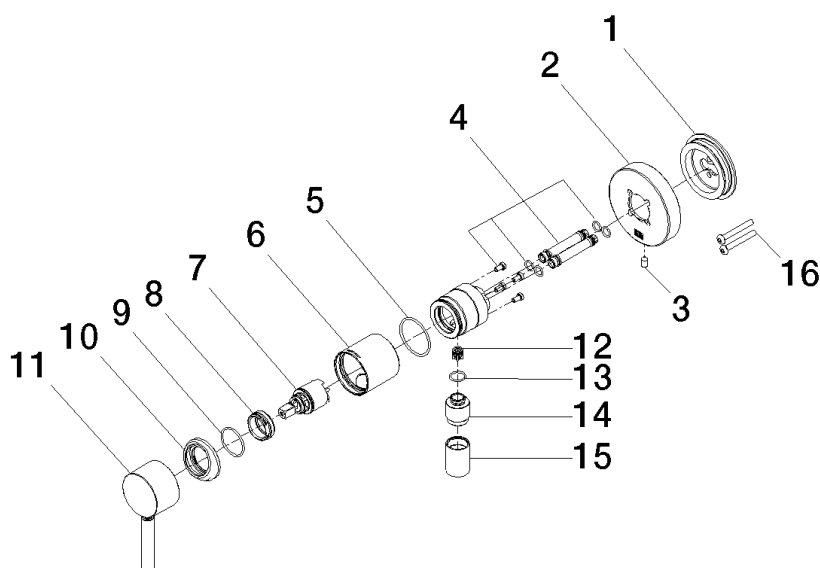
---

LGA\_38

# Concealed single-lever mixer with cover plate with integrated shower connection - Brushed Platinum

SERIES SPECIFIC

36 046 660 Product version from 4/1/2024



## Spare parts list

| No.  | Item Number        | Name                | Quantity used | Delivery time |
|--|--------------------|---------------------|---------------|---------------|
| 7  | 90 15 05 044 00 90 | cartridge           | 1.00          | 2             |
| 5  | 09 14 10 111 90    | seal                | 1.00          | 2             |
| 15   | 90 21 02 069 00-06 | cover               | 1.00          | 10            |
| 6  | 90 18 40 320 00-06 | sleeve              | 1.00          | -             |
| Spare part can no longer be ordered, please order the replacement item |                    |                     |               |               |
| 10   | 09 28 30 041-06    | cover               | 1.00          | 10            |
| 12   | 09 23 01 131 90    | back-flow preventer | 1.00          | 2             |
| 13   | 90 14 10 021 00 90 | seal                | 1.00          | 2             |
| 16   | 90 30 30 229 00 90 | screw               | 2.00          | 2             |
| 1  | 90 30 11 232 00 90 | disc                | 1.00          | 2             |
| 2  | 90 27 66 023 00-06 | rosette             | 1.00          | -             |
| Spare part can no longer be ordered, please order the replacement item |                    |                     |               |               |
| 4  | 90 24 01 046 00 90 | connection          | 2.00          | 2             |
| 3  | 09 31 11 144 90    | pin                 | 1.00          | 2             |
| 11   | 90 20 66 006 00-06 | handle              | 1.00          | 10            |
| 14   | 09 24 03 281-06    | nipple              | 1.00          | 10            |
| 9  | 09 14 10 120 90    | seal                | 1.00          | 2             |
| 8  | 09 24 04 266 90    | nut                 | 1.00          | 2             |