



Concealed single-lever mixer with cover plate with integrated shower connection - Brushed Chrome

SERIES SPECIFIC

36 046 970    Product version from 4/1/2024



- cover plate 80 x 80 mm
- Intrinsic protection against back flow.**
- Intrinsic protection against back flow.

	Brushed Chrome	36 046 970-93
	Chrome	36 046 970-00
	Brushed Platinum	36 046 970-06
	Platinum	36 046 970-08
	Dark Chrome	36 046 970-19
	Brushed Light Gold	36 046 970-27
	Brushed Durabrass (23kt Gold)	36 046 970-28
	Matte Black	36 046 970-33
	Brushed Champagne (22kt Gold)	36 046 970-46
	Champagne (22kt Gold)	36 046 970-47
	Brushed Dark Platinum	36 046 970-99

Required miscellaneous

- |                                  |               |
|----------------------------------|---------------|
| <b>Concealed wall mounting -</b> | 35 050 970 90 |
| •min. recess depth 80 mm         |               |
| •max. recess depth 105 mm        |               |



**Concealed single-lever mixer with cover plate with integrated shower connection - Brushed Chrome**

SERIES SPECIFIC

36 046 970 Product version from 4/1/2024



Flow rate chart



**Codes & Standards**

DIN 4109

ISO 3822

Ü-Zeichen



## Concealed single-lever mixer with cover plate with integrated shower connection - Brushed Chrome

---

SERIES SPECIFIC

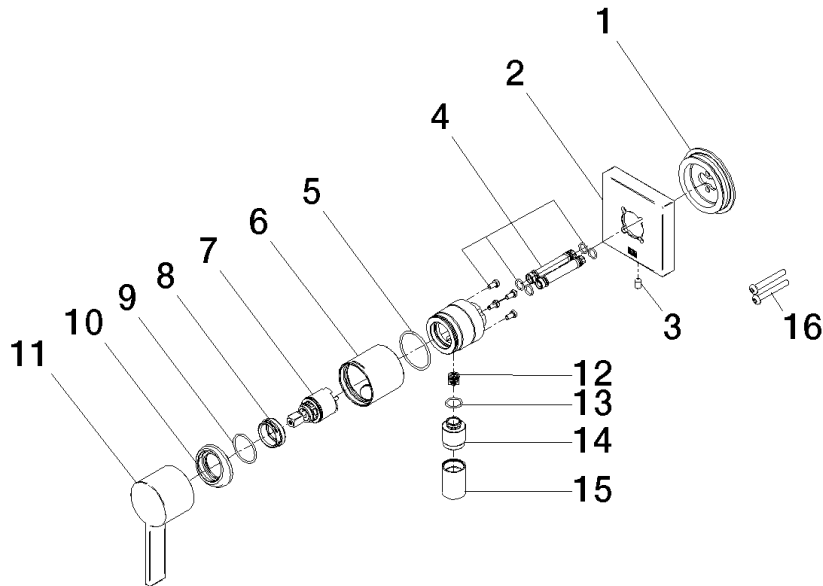
36 046 970 Product version from 4/1/2024

Certificates and sustainability

---

LGA\_38

36 046 970 Product version from 4/1/2024



## Spare parts list

No.	Item Number	Name	Quantity used	Delivery time
3	09 31 11 144 90	pin	1.00	2
14	09 24 03 281-93	nipple	1.00	20
16	90 30 30 229 00 90	screw	2.00	2
1	90 30 11 232 00 90	disc	1.00	2
7	90 15 05 044 00 90	cartridge	1.00	2
15	90 21 02 069 00-93	cover	1.00	-
Spare part can no longer be ordered, please order the replacement item				
2	90 27 97 046 00-93	rosette	1.00	20
8	09 24 04 266 90	nut	1.00	2
4	90 24 01 046 00 90	connection	2.00	2
13	90 14 10 021 00 90	seal	1.00	2
9	09 14 10 120 90	seal	1.00	2
5	09 14 10 111 90	seal	1.00	2
6	90 18 40 320 00-93	sleeve	1.00	-
Spare part can no longer be ordered, please order the replacement item				
10	09 28 30 041-93	cover	1.00	20
12	09 23 01 131 90	back-flow preventer	1.00	2
11	09 20 97 063-00	handle	1.00	10