

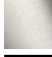






## LISSÉ Concealed single-lever mixer with cover plate - Dark Chrome

36 060 845 Product version from 4/1/2024

- cover plate 78 x 78 mm



	Dark Chrome	36 060 845-19
	Chrome	36 060 845-00
	Brushed Platinum	36 060 845-06
	Brushed Light Gold	36 060 845-27
	Matte Black	36 060 845-33
	Brushed Chrome	36 060 845-93
	Brushed Dark Platinum	36 060 845-99

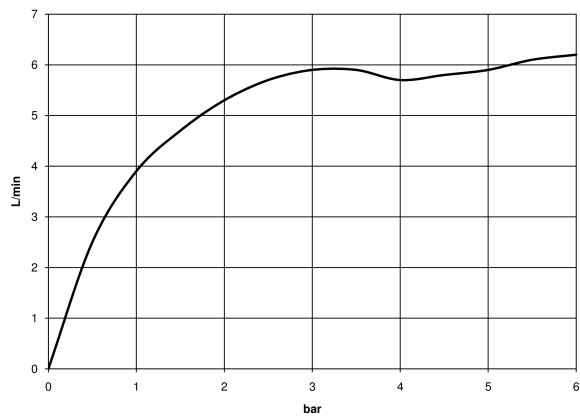
## LISSÉ Concealed single-lever mixer with cover plate - Dark Chrome

---

36 060 845 Product version from 4/1/2024

### Flow rate chart

---



### Codes & Standards

---

DIN 4109

ISO 3822

Ü-Zeichen



## LISSÉ Concealed single-lever mixer with cover plate - Dark Chrome

---

36 060 845 Product version from 4/1/2024

### Certificates

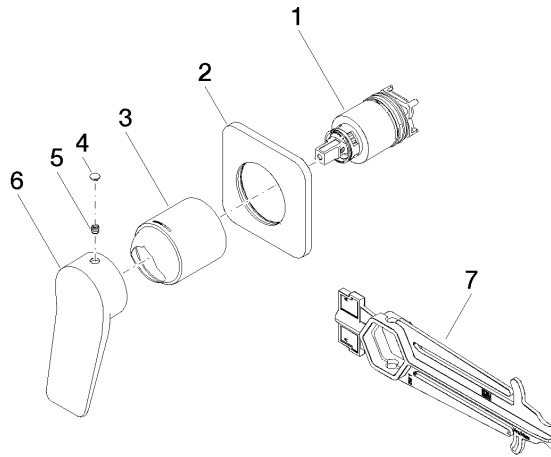
---

LGA\_29

## LISSÉ Concealed single-lever mixer with cover plate - Dark Chrome

36 060 845 Product version from 4/1/2024

Parts for other finishes can be found here: [Chrome](#)



### Spare parts list

No.	Item Number	Name	Quantity used	Delivery time
1	90 15 05 046 02 90	cartridge	1	2
2	90 27 84 020 00-19	rosette	1	20
3	09 11 02 288-19	cover	1	20
4	90 31 20 087 00-19	plug	1	20
5	90 31 11 030 00 90	pin	1	2
6	09 20 84 021-19	handle	1	60
7	90 30 09 064 00 90	key	1	2