

LISSE Concealed single-lever mixer with diverter - Matte Black

LISSE

36 120 845 Product version from 2/20/2020



- automatic diverter
- cover plate 150 x 90 mm
- WRAS

| | | |
|--|-----------------------|---------------|
| | Matte Black | 36 120 845-33 |
| | Chrome | 36 120 845-00 |
| | Brushed Platinum | 36 120 845-06 |
| | Dark Chrome | 36 120 845-19 |
| | Brushed Light Gold | 36 120 845-27 |
| | Brushed Chrome | 36 120 845-93 |
| | Brushed Dark Platinum | 36 120 845-99 |

Required miscellaneous



- Concealed single-lever mixer -** 35 020 970 90
- max. recess depth 105 mm
 - min. recess depth 80 mm

Required miscellaneous



- xGRID Installation track 555 mm -** 12 360 970 90

Required miscellaneous

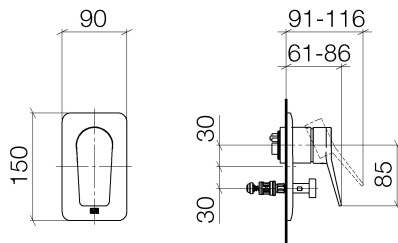


- Concealed single-lever mixer with backflow preventor -** 35 021 970 90
- max. recess depth 105 mm
 - min. recess depth 80 mm

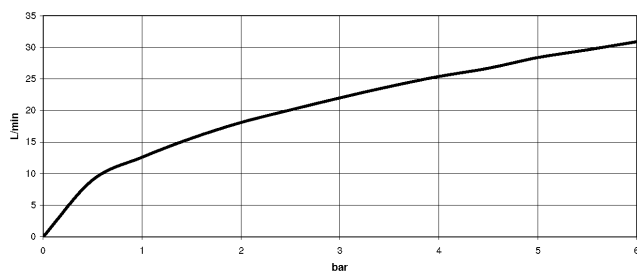
Recommended miscellaneous



- xGRID Attachment set for integrating in the dry wall construction -** 12 340 970 90



Flow rate chart



Codes & Standards

DIN 4109

ISO 3822

Scottish Water
Byelaws

UK Water Supply
Regulations

Ü-Zeichen



LISSE Concealed single-lever mixer with diverter - Matte Black

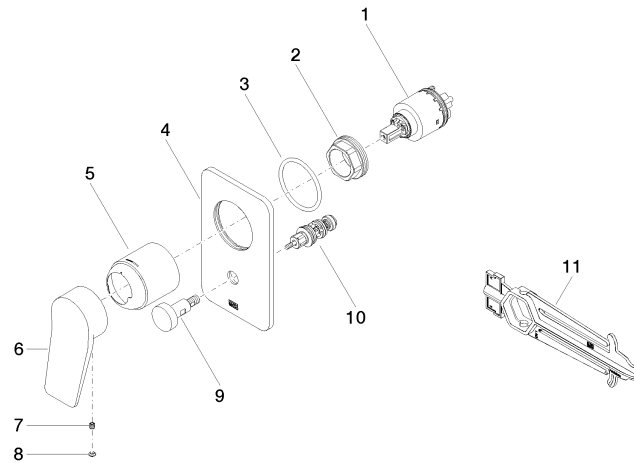
LISSE

36 120 845 Product version from 2/20/2020

Certificates and sustainability

LGA_19

WRAS_2207



Spare parts list

| No. | Item Number | Name | Quantity used | Delivery time |
|-----|--------------------|-----------|---------------|---------------|
| 5 | 09 11 02 260-33 | sleeve | 1.00 | 30 |
| 6 | 09 20 84 022-33 | handle | 1.00 | 30 |
| 1 | 90 15 05 039 00 90 | cartridge | 1.00 | 2 |
| 2 | 09 24 04 448 90 | nut | 1.00 | 2 |
| 8 | 90 31 20 087 00-33 | plug | 1.00 | 30 |
| 10 | 90 21 34 081 00 90 | diverter | 1.00 | 2 |
| 9 | 90 31 09 139 00-33 | pull-rod | 1.00 | 30 |
| 4 | 09 11 02 301-33 | plate | 1.00 | 30 |
| 3 | 09 14 10 084 90 | seal | 1.00 | 2 |
| 11 | 90 30 09 064 00 90 | key | 1.00 | 2 |
| 7 | 90 31 11 030 00 90 | pin | 1.00 | 2 |