

MADISON Concealed two-way diverter - Brushed Durabrass (23kt Gold)



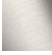
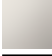

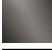
MADISON

36 200 361

Product version from 4/1/2022



- rotary diverter
- rosette Ø 60 mm
- NEUTRAL porcelain insert
- WRAS

	Brushed Durabrass (23kt Gold)	36 200 361-28
	Chrome	36 200 361-00
	Brushed Platinum	36 200 361-06
	Platinum	36 200 361-08
	Durabrass (23kt Gold)	36 200 361-09
	Brushed Dark Platinum	36 200 361-99

Required miscellaneous

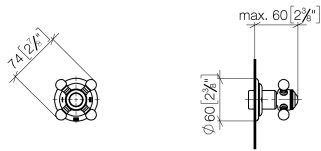


- Concealed two-way diverter -

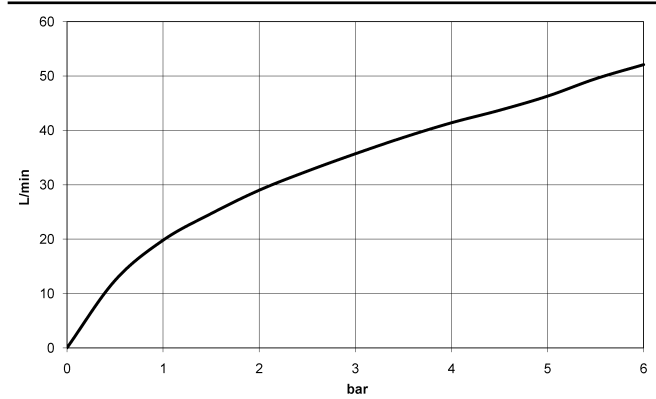
35 202 970 90

 - min. recess depth 85 mm
 - max. recess depth 155 mm

mm [inches]



Flow rate chart



Codes & Standards

DIN 4109

ISO 3822

Scottish Water
Byelaws

UK Water Supply
Regulations

Ü-Zeichen



MADISON Concealed two-way diverter - Brushed Durabrass (23kt Gold)

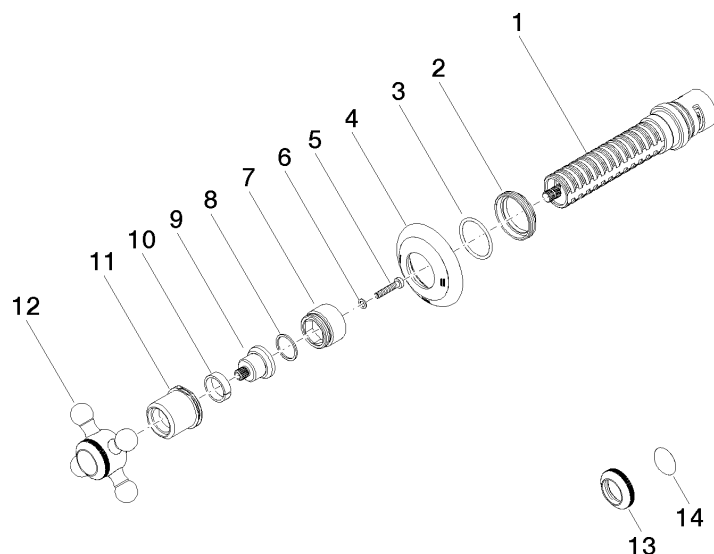
MADISON

36 200 361 Product version from 4/1/2022

Certificates and sustainability

LGA_38

WRAS_2307



Spare parts list

No.	Item Number	Name	Quantity used	Delivery time
	14 09 26 01 016 90	accessories	1.00	2
	12 04 20 36 100 02-28	handle	1.00	20
	2 09 23 10 125-00	nut	1.00	10
	1 90 90 03 304 10 90	diverter	1.00	2
	7 09 18 30 007-28	sleeve	1.00	-
Spare part can no longer be ordered, please order the replacement item				
	6 09 30 11 194 90	disc	1.00	2
	9 09 12 12 064-28	base	1.00	-
Spare part can no longer be ordered, please order the replacement item				
	11 09 21 02 161-28	cover	1.00	20
	4 09 27 36 105-28	rosette	1.00	60
	13 09 20 36 005-28	handle	1.00	20
	3 90 14 10 063 00 90	seal	1.00	2
	8 90 28 10 030 00 90	ring	1.00	2
	5 90 30 30 075 00 90	screw	1.00	2
	10 90 14 15 021 00 90	ring	1.00	2