

# Concealed three-way diverter - Brushed Bronze

SERIES SPECIFIC

36 210 740    Product version from 4/1/2022

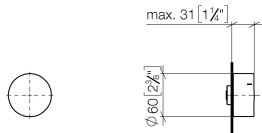


- rotary diverter
- without rosette
- handle Ø 60mm
- WRAS

	Brushed Bronze	36 210 740-42
	Chrome	36 210 740-00
	Brushed Platinum	36 210 740-06
	Light Gold	36 210 740-26
	Brushed Light Gold	36 210 740-27
	Brushed Durabrass (23kt Gold)	36 210 740-28
	Matte Black	36 210 740-33
	Brushed Dark Brass	36 210 740-39
	Brushed Champagne (22kt Gold)	36 210 740-46
	Champagne (22kt Gold)	36 210 740-47
	Brushed Dark Platinum	36 210 740-99

36 210 740 Product version from 4/1/2022

mm [inches]



**Flow rate chart**



**Codes & Standards**

DIN 4109	ISO 3822	Scottish Water Byelaws	UK Water Supply Regulations
----------	----------	---------------------------	--------------------------------

Ü-Zeichen



Concealed three-way diverter - Brushed Bronze

SERIES SPECIFIC

36 210 740 Product version from 4/1/2022

Certificates and sustainability

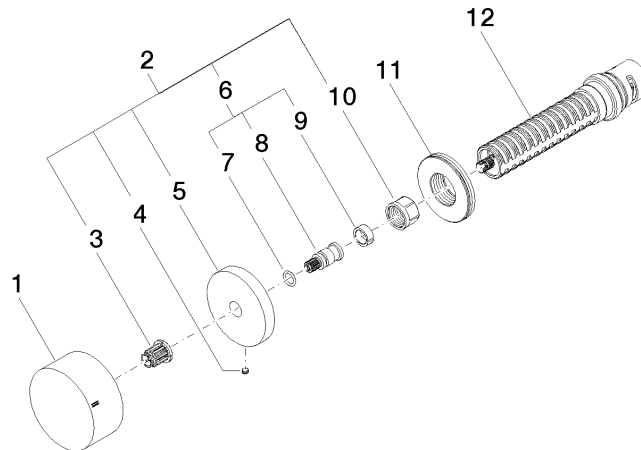
LGA\_38 WRAS\_2307

## Concealed three-way diverter - Brushed Bronze

SERIES SPECIFIC

36 210 740 Product version from 4/1/2022

Parts for other  
finishes can be found  
here: [Chrome](#)



### Spare parts list

No.	Item Number	Name	Quantity used	Delivery time
2	04 27 74 004 00-42	rosette	1.00	60
6	04 29 06 020 00-00	spindle	1.00	10
10	90 23 30 023 00 90	nut	1.00	2
5	09 27 74 004-42	rosette	1.00	60
1	09 20 74 045-42	handle	1.00	60
11	09 30 01 107 90	sleeve	1.00	2
8	09 29 06 020-42	spindle	1.00	-
Spare part can no longer be ordered, please order the replacement item				
4	09 31 11 055 90	pin	1.00	2
12	90 90 03 303 10 90	diverter	1.00	2
9	90 14 15 020 03 90	ring	1.00	2
7	90 14 10 060 00 90	seal	1.00	2
3	90 12 12 002 00 90	fixing cap	1.00	2