





DORNBRAUCHT YARRE Concealed thermostat with one function volume control - Chrome

DORNBRAUCHT
YARRE

36 425 832 Product version from 1/1/2023



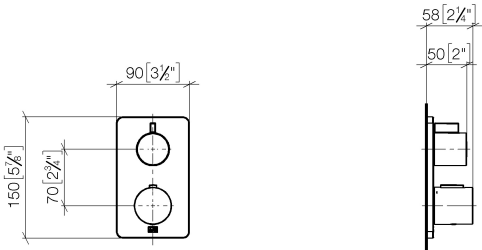
- cover plate Ø 150 mm
- temperature control handle with safety limit stop at 38°C
- hot water temperature limiter, can be preset
- WRAS

	Chrome	36 425 832-00
	Soft Black	36 425 832-69

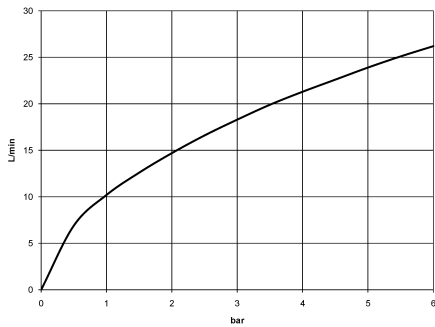
Required miscellaneous

Concealed thermostat - 35 424 970 90





Flow rate chart



Codes & Standards

DIN 4109	ISO 3822	Scottish Water Byelaws	UK Water Supply Regulations
----------	----------	------------------------	-----------------------------

Ü-Zeichen



DORNBRAUCH YARRE Concealed thermostat with one function volume control - Chrome

DORNBRAUCH
YARRE

36 425 832 Product version from 1/1/2023

Certificates and sustainability

LGA_19

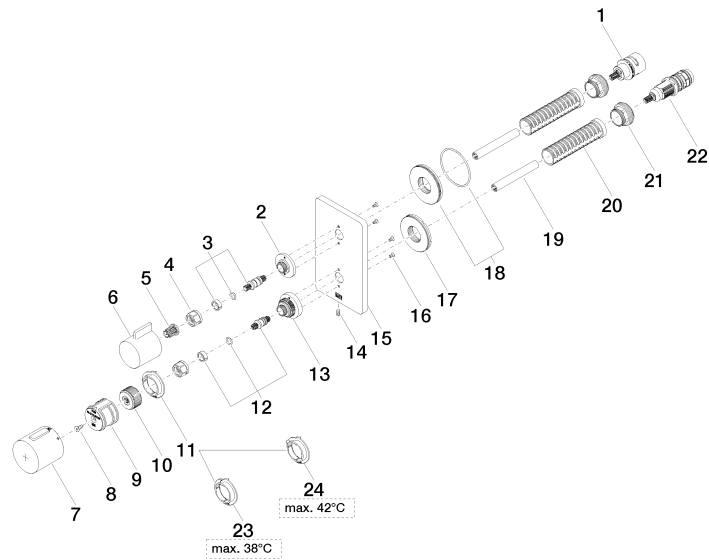
LGA_19

WRAS_250402

DORNBRAUCHT YARRE Concealed thermostat with one function volume control - Chrome

DORNBRAUCHT
YARRE

36 425 832 Product version from 1/1/2023





DORNBRACHT YARRE Concealed thermostat with one function volume control - Chrome

DORNBRACHT
YARRE

36 425 832 Product version from 1/1/2023

Spare parts list

No.	Item Number	Name	Quantity used	Delivery time
13	09 12 12 051-00	base	1.00	10
1	90 90 03 166 00 90	top	1.00	2
14	09 31 11 134 90	pin	1.00	2
16	09 30 30 157 90	screw	4.00	2
3	04 29 06 111 01-00	spindle	1.00	10
6	09 20 67 006-00	handle	1.00	10
18	90 30 01 190 00 90	disc	1.00	2
2	09 12 12 053-00	base	1.00	10
17	09 30 01 296 90	disc	1.00	2
7	90 17 33 017 00-00	handle	1.00	10
5	90 12 12 002 00 90	fixing cap	1.00	2
21	09 24 04 257 90	nut	2.00	2
11	09 28 10 187 90	regulator	1.00	2
22	90 15 02 013 00 90	cartridge	1.00	2
23	09 28 10 188 90	regulator	1.00	2
12	04 29 06 024 01-00	spindle	1.00	10
24	09 28 10 189 90	regulator	1.00	2
10	09 12 12 054 90	base	1.00	2
19	90 23 01 124 00 90	sleeve	2.00	2
20	90 18 40 077 01 90	spindle	2.00	2
9	90 12 12 052 00 90	base	1.00	2
8	90 30 30 124 00 90	screw	1.00	2
4	90 23 30 023 00 90	nut	2.00	2
15	09 11 02 352-00	plate	1.00	10